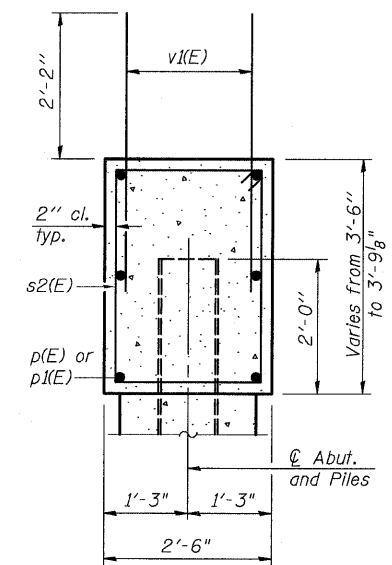
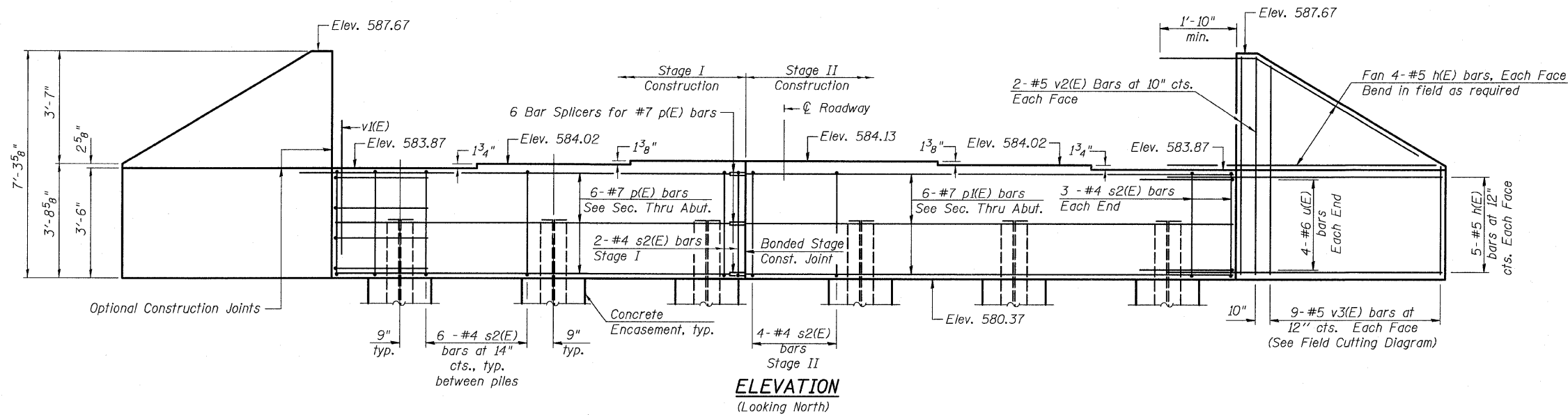


STATE OF ILLINOIS  
DEPARTMENT OF TRANSPORTATION

ROUTE NO.	SECTION	COUNTY	TOTAL SHEETS	SHEET NO.
FAP 326	119BR-2	GRUNDY	52	32
FED. ROAD DIST. NO. 7		ILLINOIS	FED. AID PROJECT-	

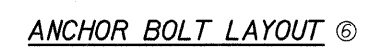
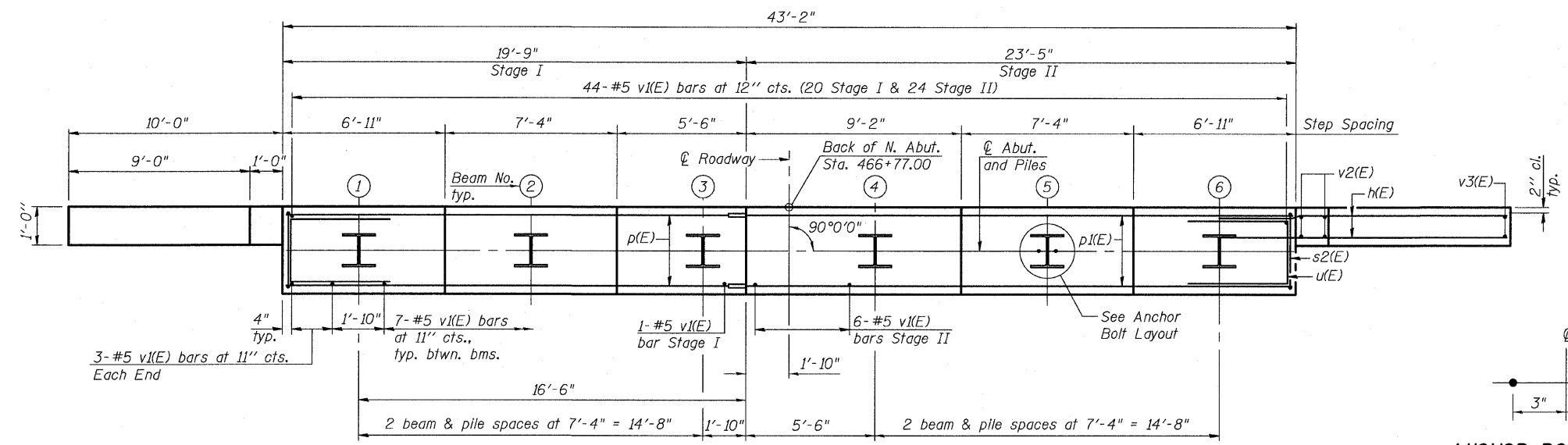
SHEET NO. 16  
24 SHEETS

Contract #66688



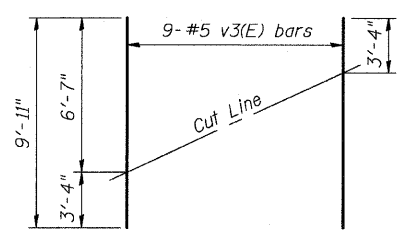
**BILL OF MATERIAL**

Bar	No.	Size	Length	Shape
h(E)	36	#5	11'-8"	—
p(E)	6	#7	19'-5"	—
p1(E)	6	#7	23'-1"	—
s2(E)	36	#4	11'-5"	□
u(E)	8	#6	9'-8"	—
v1(E)	85	#5	4'-4"	—
v2(E)	8	#5	6'-11"	—
v3(E)	18	#5	9'-11"	—
Structure Excavation		Cu. Yd.	73	
Concrete Structures		Cu. Yd.	18.7	
Concrete Encasement		Cu. Yd.	2.1	
Reinforcement Bars, Epoxy Coated		Pound	1,980	
Furnishing Steel Piles, HP12x53		Foot	295	
Driving Piles		Foot	295	
Test Pile, HP12x53		Each	1	
Pile Shoes		Each	6	



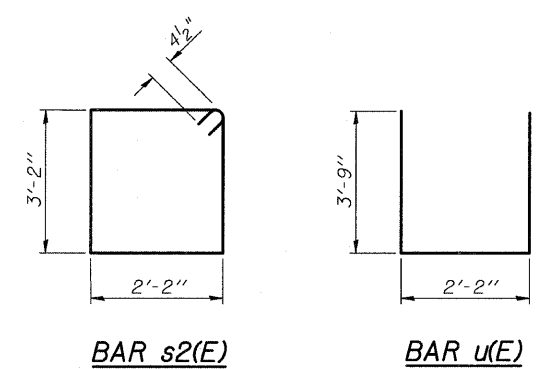
**PILE DATA**

Type: Steel HP12x53  
Nominal Required Bearing: 419 kips  
Factored Resistance Available: 139 kips  
Est. Length: 59'  
No. Production Piles: 5  
No. Test Piles: 1



Order v3(E) full length. Cut as shown and use remainder of bars in opposite face.

**PLAN**



- Notes:
- ① Pour steps monolithically with cap.
  - ② For details of Bar Splicers, see sheet 18 of 24.
  - ③ For details of piles and Concrete Encasement, see sheet 20 of 24.
  - ④ All edges shall have standard 3/4" chamfer.
  - ⑤ Place v1(E) bars to clear flange of beam.
  - ⑥ Space reinforcement in cap to miss anchor bolts.

**NORTH ABUTMENT DETAILS**  
IL 47 OVER WEST FORK MAZON RIVER  
FAP ROUTE 326 - SECTION 119BR-2  
GRUNDY COUNTY  
STATION 466+07.00  
STRUCTURE NO. 032-0116

Eastport Business Center 1  
100 Lanter Court, Suite 1  
Collinsville, Illinois 62234  
618-345-2200  
OATES ASSOCIATES  
Consulting Engineers Design Firm License No. 184.001115