

STATE OF ILLINOIS
DEPARTMENT OF PUBLIC WORKS & BUILDINGS
DIVISION OF HIGHWAYS

SHEET NO.	DATE	BY	REVISED	BY	DATE
47	10/21/54	J.W. Briscoe	3/1	3/1	5 SHEETS

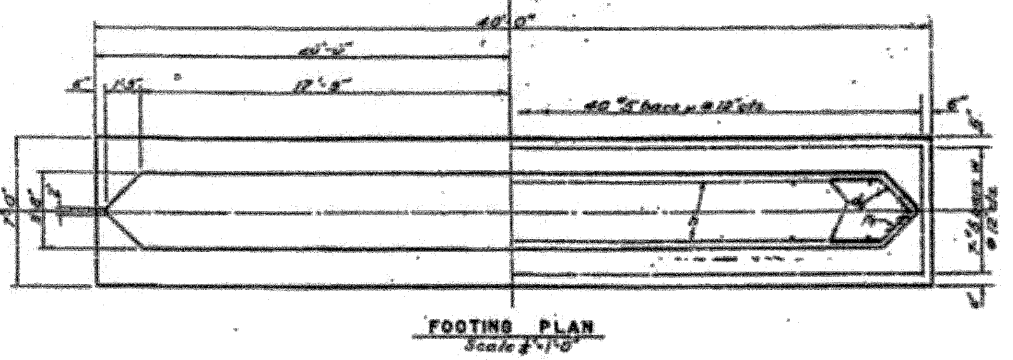
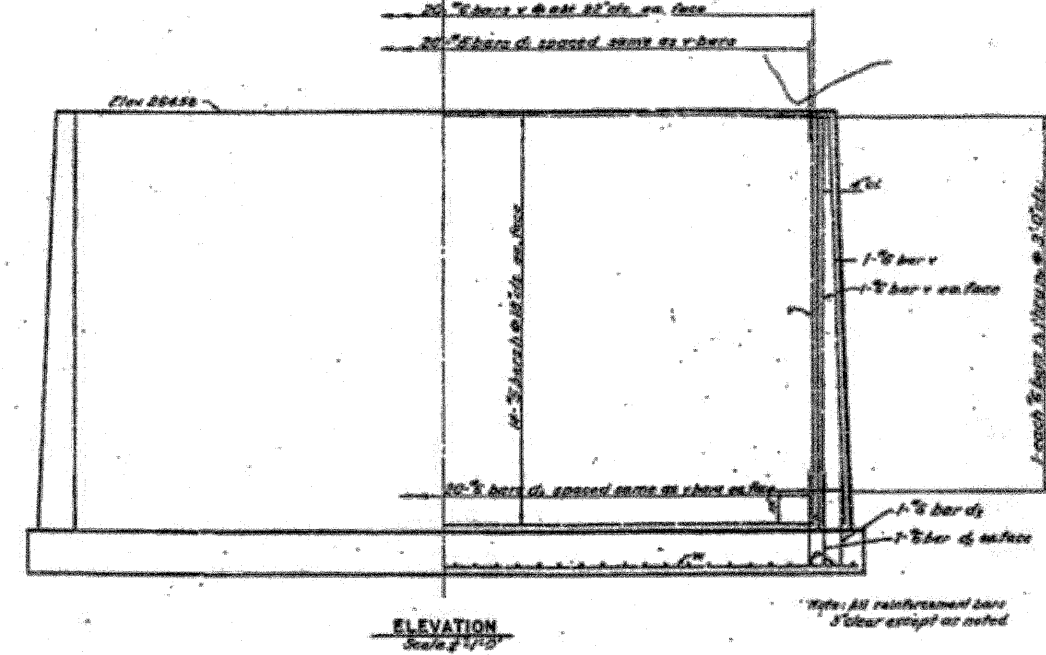
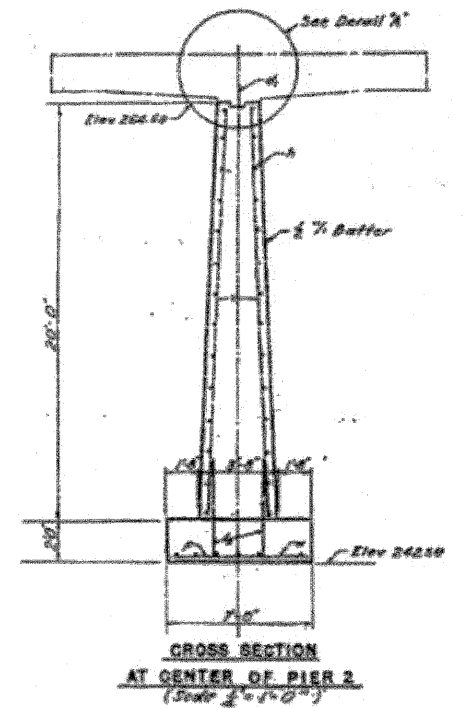
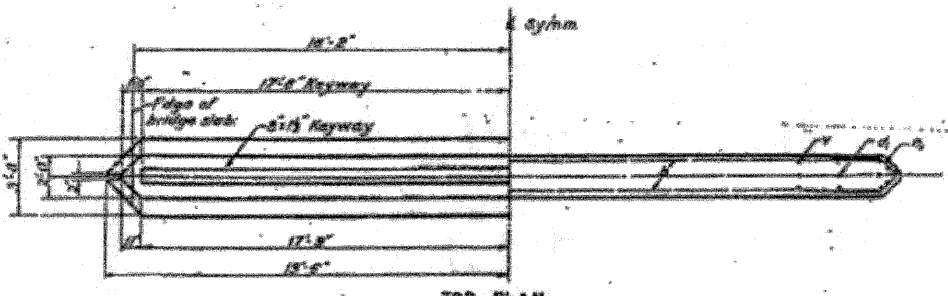
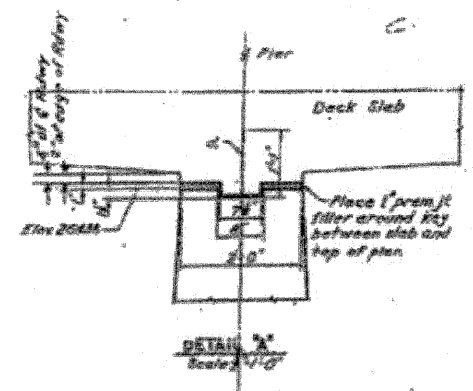
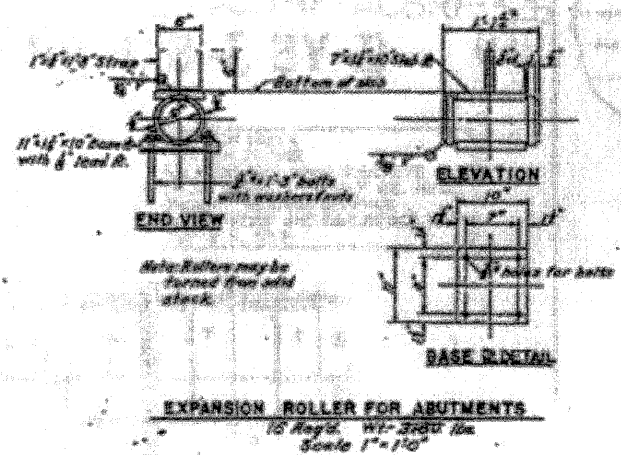
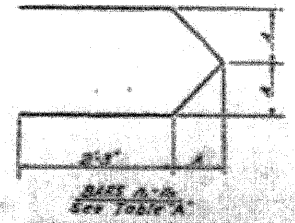


TABLE A

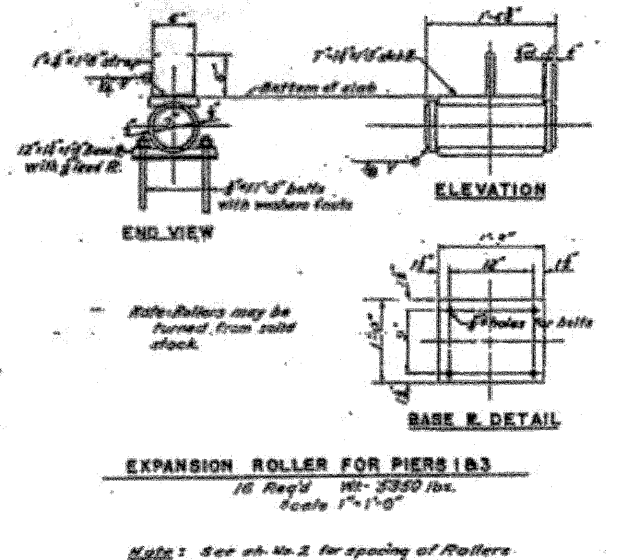
BAR	SIZE	A
1	1/2"	1'-0"
2	3/4"	1'-0"
3	1"	1'-0"
4	1 1/4"	1'-0"
5	1 1/2"	1'-0"
6	1 3/4"	1'-0"
7	2"	1'-0"



BILL OF MATERIALS

BAR	NO.	SIZE	LENGTH	SHAPE
1	20	1/2"	2'-0"	
2	40	3/4"	2'-0"	
3	20	1"	2'-0"	
4	40	1 1/4"	2'-0"	
5	20	1 1/2"	2'-0"	
6	20	1 3/4"	2'-0"	
7	20	2"	2'-0"	

Class A Cast Iron: 582
Reinforcement Bars: 2420
Class B Expansion for Slab: 228
Structural Steel: 222



DESIGNED: J.W. Briscoe
CHECKED: J.W. Briscoe (P.I.D.)
DRAWN: J.W. Briscoe (P.M.A.)
CHECKED: J.W. Briscoe (P.I.D.)

DATE: Feb 17 1954
EXAMINED: W.B. Hanover
PERIOD: [Signature]
APPROVED: R.L. [Signature]

PROJ. F-204 (5)
PIER 2
S.B.I. RT. 47 SEC. 19-BY
GRUNDY COUNTY
STA. 501+58