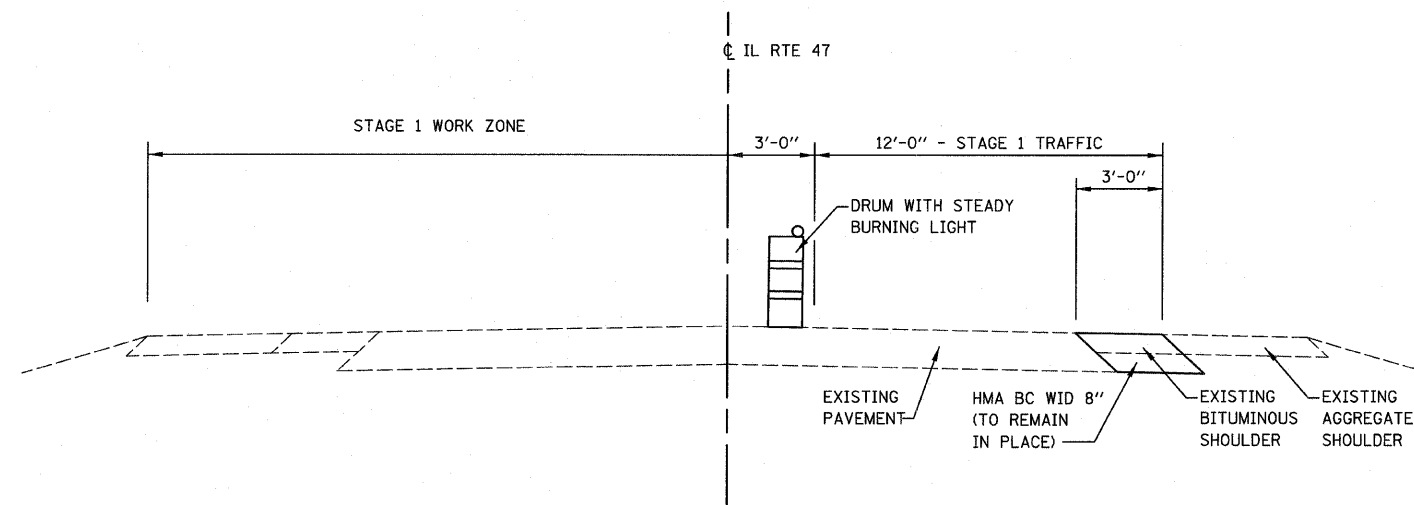


STAGE 1 CONSTRUCTION TYPICAL SECTION
(LOOKING NORTH @ STRUCTURE)



STAGE 1 CONSTRUCTION TYPICAL SECTION
(LOOKING NORTH @ APPROACH)

STAGE CONSTRUCTION GENERAL NOTES

1. ONE LANE OF TRAFFIC ON FAP ROUTE 326 SHALL BE MAINTAINED AT ALL TIMES.
2. THE FURNISHING, PLACEMENT AND REMOVAL OF THE TYPE C BI-DIRECTIONAL REFLECTORS SHALL BE INCLUDED IN THE COST OF "TRAFFIC CONTROL AND PROTECTION, STANDARD 701321."
3. EMERGENCY ACCESS SHALL BE PROVIDED AT ALL TIMES.

SUGGESTED STAGE CONSTRUCTION

SUGGESTED STAGE 1

PHASE 1

1. UTILIZING TRAFFIC CONTROL AND PROTECTION, STANDARD 701326, CONSTRUCT THE HMA BASE COURSE WIDENING, 8" ON THE RT SIDE OF THE ROADWAY.

PHASE 2

1. UTILIZING TRAFFIC CONTROL AND PROTECTION, STANDARD 701321, DIRECT TRAFFIC ON THE RT LANE OF FAP ROUTE 326.
2. INSTALL TEMPORARY SHORING.
3. REMOVE THE LT SIDE OF THE EXISTING STRUCTURE.
4. CONSTRUCT THE LT SIDE OF THE BOX CULVERT AND POROUS GRANULAR EMBANKMENT.
5. COMPLETE HMA SURFACE REMOVAL, 1/2 " FOR THE LT LANE OF FAP ROUTE 326 FROM STA. 704+05 TO STA. 705+55 AND FROM STA. 706+27 TO STA. 707+68.
6. CONSTRUCT THE PROPOSED HMA BASE COURSE AND BINDER COURSE FOR THE LT LANE OF FAP ROUTE 326 FROM STA. 704+05 TO STA. 707+68.
7. INSTALL GUARD RAIL AND BITUMINOUS STABILIZATION ON THE LT SIDE OF FAP ROUTE 326.
8. INSTALL TEMPORARY PAVEMENT MARKING AND SWITCH TRAFFIC CONTROL.

SUGGESTED STAGE 2

1. UTILIZING TRAFFIC CONTROL AND PROTECTION, STANDARD 701321, DIRECT TRAFFIC ON THE LT LANE OF FAP ROUTE 326.
2. REMOVE THE RT SIDE OF THE EXISTING STRUCTURE.
3. CONSTRUCT THE RT SIDE OF THE BOX CULVERT.
4. COMPLETE HMA SURFACE REMOVAL, 1/2 " FOR THE RT LANE OF FAP ROUTE 326 FROM STA. 704+05 TO STA. 705+55 AND FROM STA. 706+27 TO STA. 707+68.
5. CONSTRUCT THE PROPOSED HMA BASE COURSE AND BINDER COURSE FOR THE RT LANE OF FAP ROUTE 326 FROM STA. 704+05 TO STA. 707+68.
6. CONSTRUCT REMAINING 5' OF HMA SHOULDER ON RT SIDE OF FAP ROUTE 326 FROM STA. 702+37 TO STA. 709+00 TO THE ELEVATION OF THE HMA BASE COURSE WIDENING.
7. INSTALL GUARD RAIL AND BITUMINOUS STABILIZATION ON RT SIDE OF FAP ROUTE 326.

SUGGESTED STAGE 3

1. CONSTRUCT THE 8' HMA SHOULDER ON THE RT & LT SIDE FROM STA. 701+34 TO 702+37 AND STA. 709+00 TO 710+37.
2. UTILIZING TRAFFIC CONTROL AND PROTECTION, STANDARD 701306, CONSTRUCT THE PROPOSED SURFACE COURSE FOR BOTH LANES OF FAP ROUTE 326 FROM STA. 701+34 TO STA. 710+37.
3. CONSTRUCT THE 1.5" HMA SHOULDER LIFT ON THE RT SIDE FROM STA. 702+37 TO STA. 709+00.
4. CONSTRUCT THE 1.5" HMA SHOULDER LIFT ON THE LT SIDE FROM STA. 702+37 TO STA. 709+00.
5. UTILIZING TRAFFIC CONTROL AND PROTECTION, STANDARD 701311, CONSTRUCT THE FINAL PAVEMENT MARKING.

FILE NAME = H:\jeff_delete\26854.002_grosser\Technical	USER NAME = #USER# Production\Civil\Microstation\sheets\2.dgn	DESIGNED -	REVISED -	STATE OF ILLINOIS DEPARTMENT OF TRANSPORTATION	STAGE 1 CONSTRUCTION TYPICALS			F.A.P. RTE.	SECTION	COUNTY	TOTAL SHEETS	SHEET NO.
PLOT SCALE = 20,0000 ' / IN.	CHECKED -	REVISED -	326					118 BR	GRUNDY	35	8	
PLOT DATE = 8/11/2008	DATE -	REVISED -	SCALE: SHEET NO. OF SHEETS STA. TO STA.			CONTRACT NO. 66689						
						ILLINOIS FED. AID PROJECT						