

STATE OF ILLINOIS
DEPARTMENT OF TRANSPORTATION

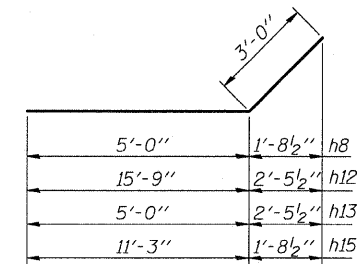
ROUTE NO.	SECTION	COUNTY	TOTAL SHEETS	SHEET NO.
F.A.P. 326	118 BR	Grundy	35	17
FED. ROAD DIST. NO. 7	ILLINOIS	FED. AID PROJECT-		

SHEET NO. 2
6 SHEETS

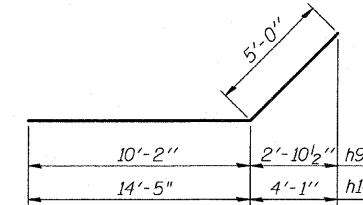
Contract #66689

GENERAL NOTES

- Reinforcement bars shall conform to the requirements of ASTM A 706 Gr 60. See Special Provisions.
- Layout of slope protection system may be varied in the field to suit ground conditions as directed by the Engineer.
- If the Contractor chooses to alter the temporary cantilevered sheet piling design requirements shown on the plans, a design submittal including plan details and calculations will be required for review and acceptance by the Engineer.
- The Contractor shall connect the first sheet to the existing abutment wall to ensure stability of sheets driven to the top of the existing footing. This connection shall be reviewed and accepted by the Engineer and included in the cost for Temporary Sheet Piling.
- Hard driving may be encountered during the sheet piling installation. The Contractor shall provide the appropriate driving equipment for the soil conditions indicated on the boring logs.
- See Roadway Plans for staging.
- Precast alternate will be allowed. The stage construction lane widths must be maintained.
- The guardrail shall be mounted to the box culvert per Highway Standard 630101, Case IV Mounted On Slab. The guardrail post shall be welded all around to the base plate using $\frac{3}{16}$ " fillet welds.

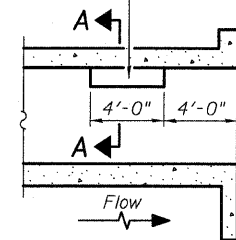


BARS h8, h12, h13, & h15

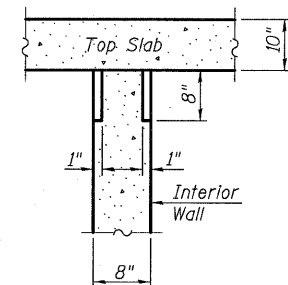


BARS h9 & h14

Notch formed by rough finished board attached to and removed with formwork, each interior wall. (Do not chamfer).

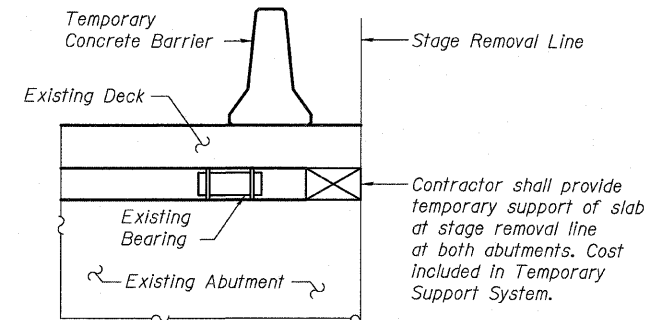
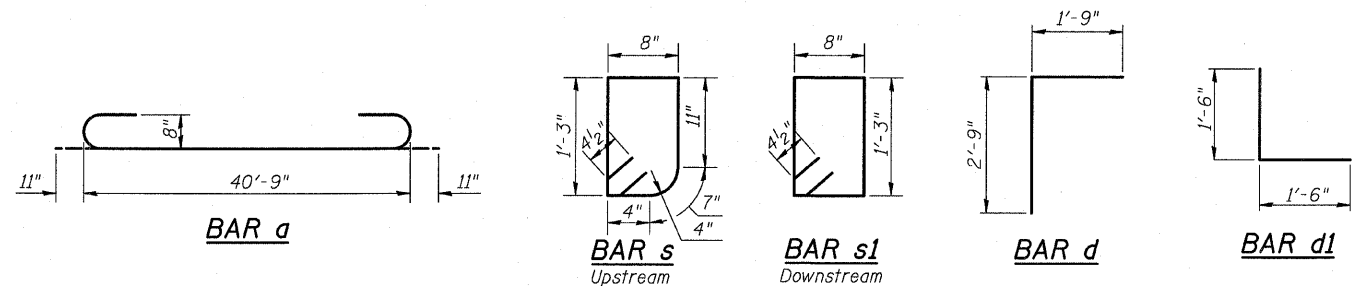


LONGITUDINAL SECTION

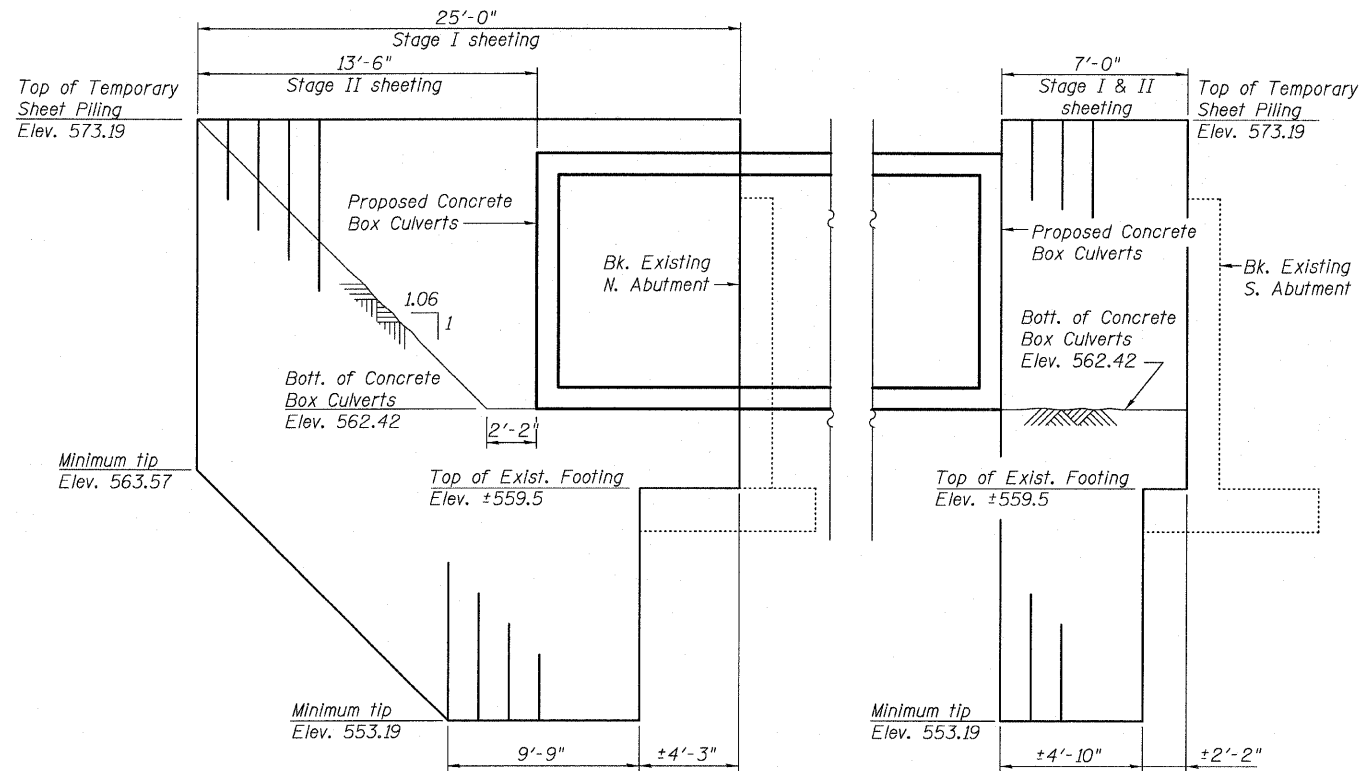


SECTION A-A

**PHOEBE NESTING
SITE DETAILS
(Downstream End Only)**



TEMPORARY SUPPORT DETAIL



NORTH APPROACH

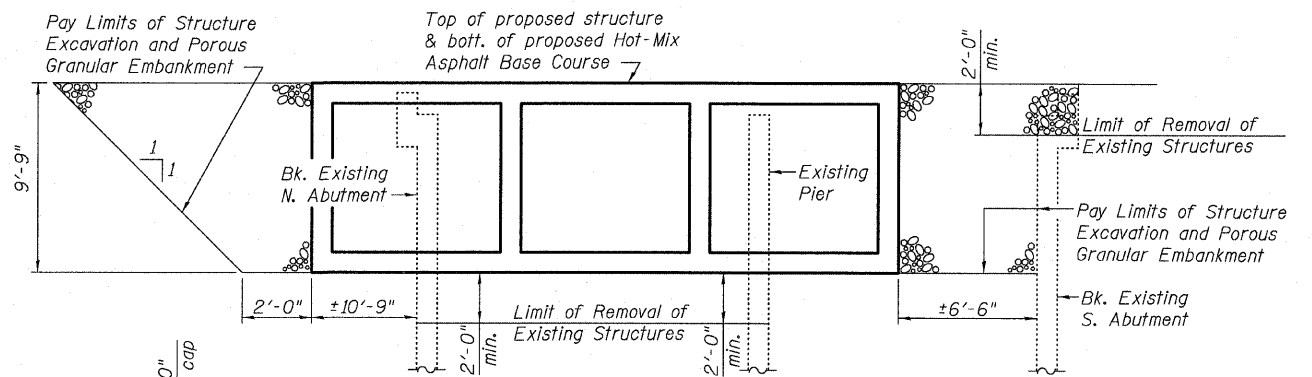
Minimum Section Modulus = 7.6 in³/ft

SOUTH APPROACH

Minimum Section Modulus = 7.6 in³/ft

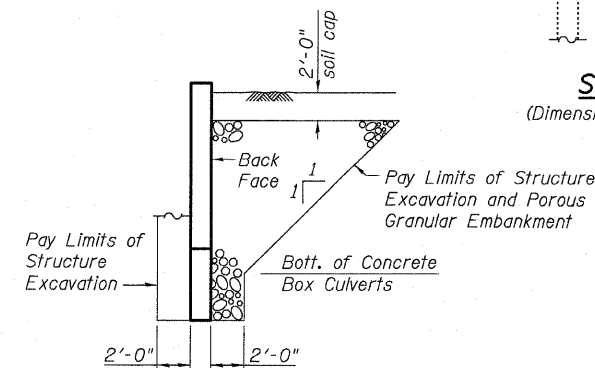
TEMPORARY SHEET PILE DETAIL

(Dimensions are along stage construction line)



SECTION THRU BARREL

(Dimensions are at right angles to ϕ Structure)



SECTION THRU WINGWALL

GENERAL NOTES & STRUCTURE DETAILS

IL ROUTE 47 OVER DRAINAGE DITCH

F.A.P. 326 - SECTION 118 BR

GRUNDY COUNTY

STA. 705+91.00

STRUCTURE NUMBER 032-2009



Eastport Business Center 1
100 Lanter Court, Suite 1
Collinsville, Illinois 62234
618-345-2200

Design Firm License No. 184.001115