

INDEX OF SHEETS

- COVER SHEET
- GENERAL NOTES AND LIST OF STANDARDS
- SUMMARY OF QUANTITIES
- TYPICAL SECTIONS
- SCHEDULE OF QUANTITIES
- ALIGNMENT AND TIES
- PLAN AND PROFILE SHEETS
- DETOUR PLAN SHEET
- EROSION & SEDIMENT CONTROL SHEETS
- DRAINAGE PLAN AND PROFILE SHEETS
- RIGHT OF WAY SHEET
- PAVEMENT MARKING AND LANDSCAPING SHEETS
- STRUCTURAL SHEETS
- EXISTING PLAN - STRUCTURAL
- DISTRICT DETAILS
- CROSS SECTIONS

STATE OF ILLINOIS
DEPARTMENT OF TRANSPORTATION
DIVISION OF HIGHWAYS

PROPOSED
HIGHWAY PLANS

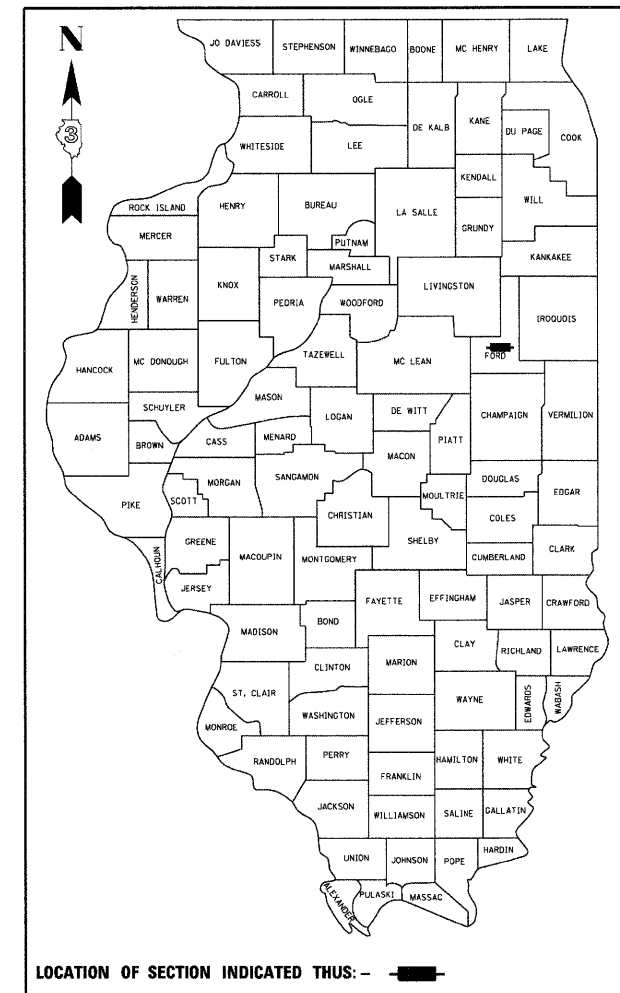
FAP ROUTE 798 (IL RTE 115)
SECTION 107-BR, 108-BR, 108-BR-1
PROJECT
FORD COUNTY

C - 93 - 026 - 07

REPLACE THREE SINGLE SPAN REINFORCED CONCRETE
SLAB BRIDGES OVER A DRAINAGE DITCH WITH
THREE DOUBLE BOX CULVERTS

F.A.P. RTE.	SECTION	COUNTY	TOTAL SHEETS	SHEET NO.
798	107-BR, 108-BR, 108-BR-1	FORD	92	5
FED. ROAD DIST. NO.	ILLINOIS	CONTRACT NO. 66698		

P-93-071-98 D-93-046-06
P-93-070-98
P-93-044-05



LOCATION OF SECTION INDICATED THUS: - [shaded box] -

FUNCTION CLASSIFICATION

RURAL MINOR ARTERIAL
2009 ADT = 850
P.V. = 85.0% S.U. = 7.5% M.U. = 7.5%

STATE OF ILLINOIS
DEPARTMENT OF TRANSPORTATION
DIVISION OF HIGHWAYS

SUBMITTED _____ 20 _____

DEPUTY DIRECTOR OF HIGHWAYS, REGION ENGINEER

20 _____

ENGINEER OF DESIGN AND ENVIRONMENT

20 _____

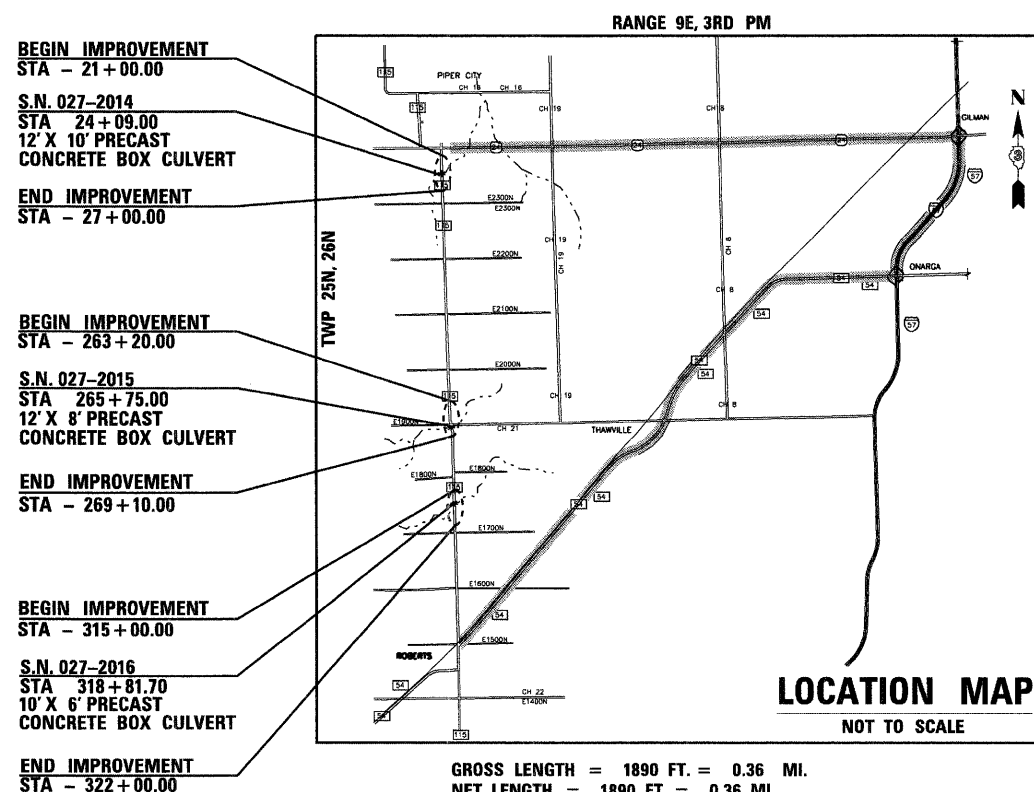
DIRECTOR OF HIGHWAYS, CHIEF ENGINEER



FULL SIZE PLANS HAVE BEEN PREPARED USING STANDARD ENGINEERING SCALES. REDUCED SIZED PLANS WILL NOT CONFORM TO STANDARD SCALES. IN MAKING MEASUREMENTS ON REDUCED PLANS, THE ABOVE SCALES MAY BE USED.

J.U.L.I.E.
JOINT UTILITY LOCATION INFORMATION FOR EXCAVATION
1-800-892-0123
OR 811

DISTRICT 3 NO. (815) 434-6131
PROJECT ENGINEER: JOSEPH KANNEL, P.E.
UNIT CHIEF: MICHELE LINDEMANN, P.E.
TOWNSHIP: LYMAN, BRENTON
CONTRACT NO. 66698



Syed M. Kazi
Licensed Professional Engineer
State of Illinois
Lic. No. 062-033486
Expires: 11-30-2009
Signature and Seal apply to Civil Drawings



Syed M. Kazi
Licensed Structural Engineer
State of Illinois
Lic. No. 081-004047
Expires: 11-30-2008
Signature and Seal apply to Structural Drawings

DELTA ENGINEERING, INC.
CONSULTING ENGINEERS, CONSTRUCTION MANAGERS, SURVEYORS
111 West Jackson Blvd., Suite 910 Chicago, IL 60604-2001

PRINTED BY THE AUTHORITY
OF THE STATE OF ILLINOIS