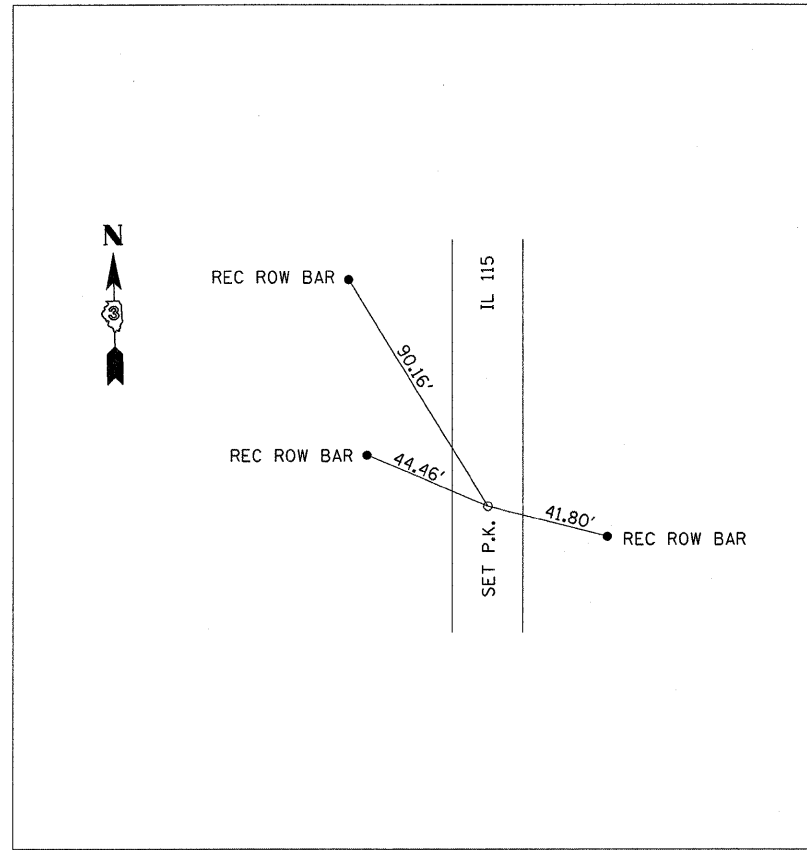


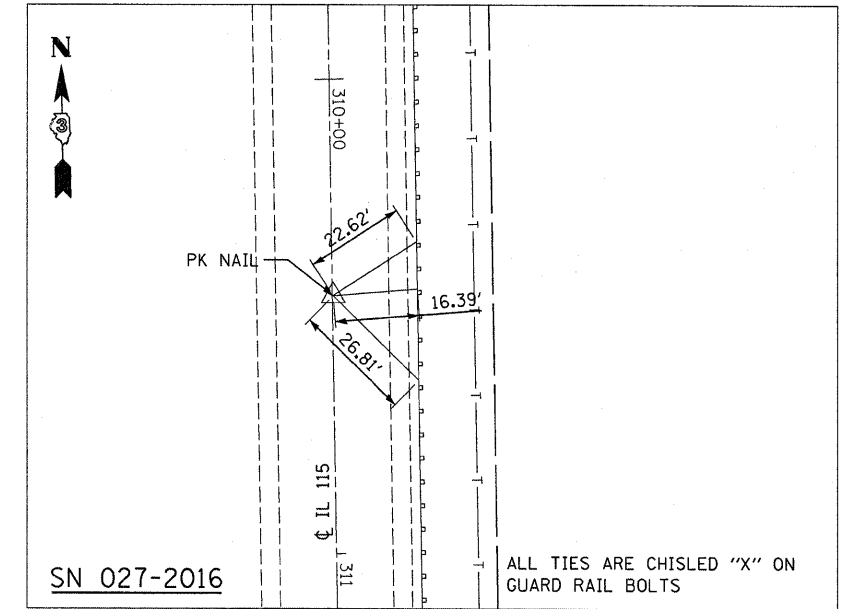
PT STA. 263+80.78, PI STA. 10+00, PC STA. 264+41.60

REPLACE WITH PERMANENT SURVEY MARKER



W 1/4 COR. SEC. 10

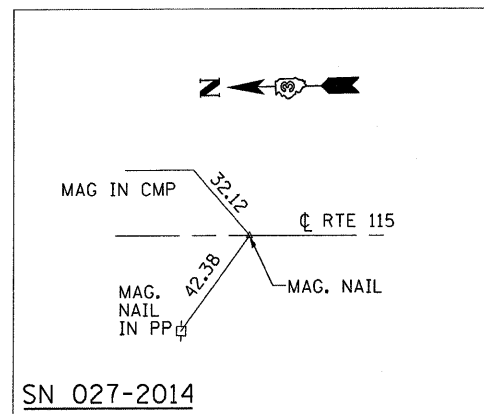
REPLACE WITH PERMANENT SURVEY MARKER



POT STA. 310+45.40

ALL TIES ARE CHISELED "X" ON GUARD RAIL BOLTS

MONUMENT RECORD
LAND SURVEY MONUMENTS SITUATED IN
SECTION 10 TWP 26 NORTH
RANGE 9 EAST, 3RD P.M.
FORD COUNTY, IL.



P.O.T. STA. 20+00.00
MAG. NAIL

BENCH MARK INFORMATION				
POINT ID	X	Y	Z	DESCRIPTION
For Culvert SN 027-2015 & SN 027-2016				
BM#1	1026847.737	1460189.013	729.22	R.R. SPIKE IN P.P. AT STA. 263+32.544, 150.47' RT
BM#2	1027206.924	1455002.317	736.876	R.R. SPIKE IN P.P. AT STA. 315+78.739, 32.528' RT
BM#3	1027225.83	1454673.613	735.048	CHISELED "X" AT TOP OF WINGWALL, STA. 319+07.705, 18.95' RT
For Culvert SN 027-2014				
TBM# 117	1026073.06	1484555.71	678.13	R.R. SPIKE IN P.P. WITH GUY WIRE, STA. 19+71, 31' RT
TBM#118	1026083.70	1484184.49	676.74	R.R. SPIKE IN P.P. WITH GUY WIRE, STA. 23+43, 32' RT

FILE NAME = c:\pwork\pwidot\lindeannms\dms30072	USER NAME = lindeannms	DESIGNED - DB	REVISED -	STATE OF ILLINOIS DEPARTMENT OF TRANSPORTATION	ALIGNMENT AND TIES				F.A.P. RTE.	SECTION	COUNTY	TOTAL SHEETS	SHEET NO.
ALIGN&TIES.dgn	DRAWN - RM/FZ/DK/NS	REVISIONS -	DATE - AUGUST 2008						798	107 BR, 108-BR, 108-BR-1	FORD	92	17
PLOT SCALE = 20.00' / IN.	CHECKED - AS	REVISIONS -	DATE - AUGUST 2008		CONTRACT NO. 66698								
PLOT DATE = Aug 28, 2008 - 09:27:49 AM	DATE - AUGUST 2008	REVISIONS -	DATE - AUGUST 2008		SCALE: 1"=20'	SHEET NO.	OF SHEETS	STA.	TO STA.	FED. ROAD DIST. NO.	ILLINOIS FED. AID PROJECT		