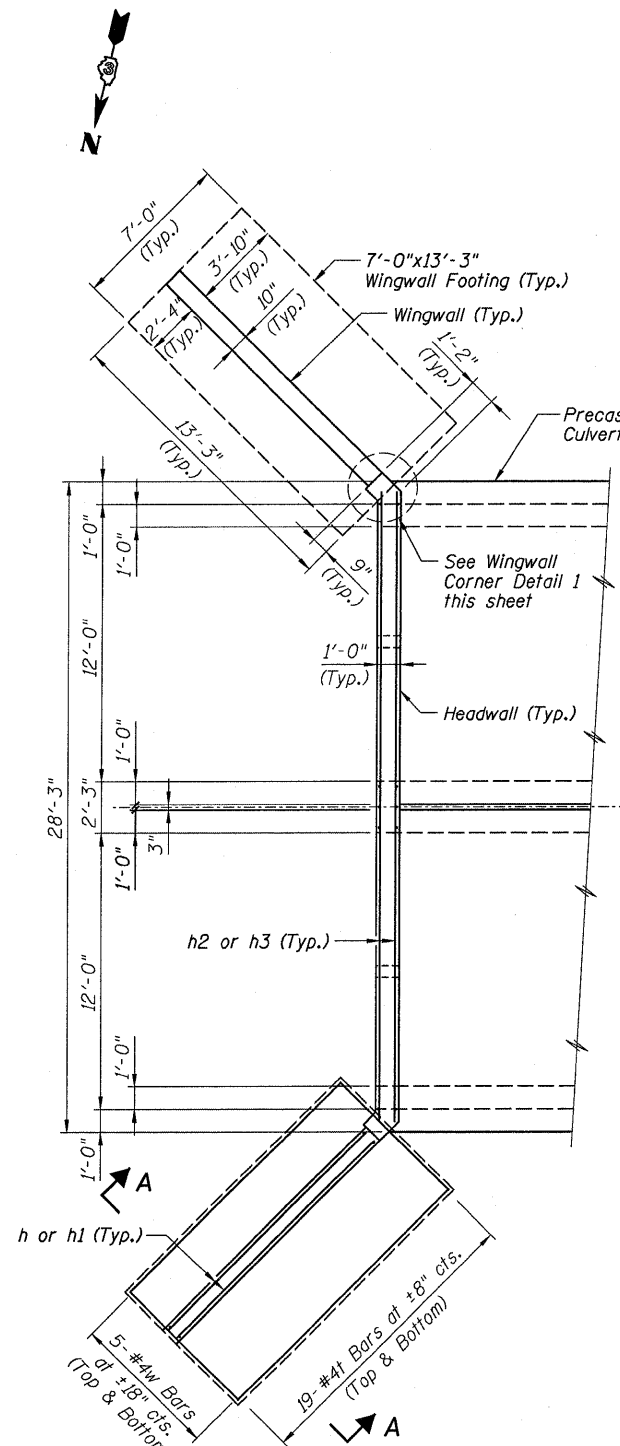


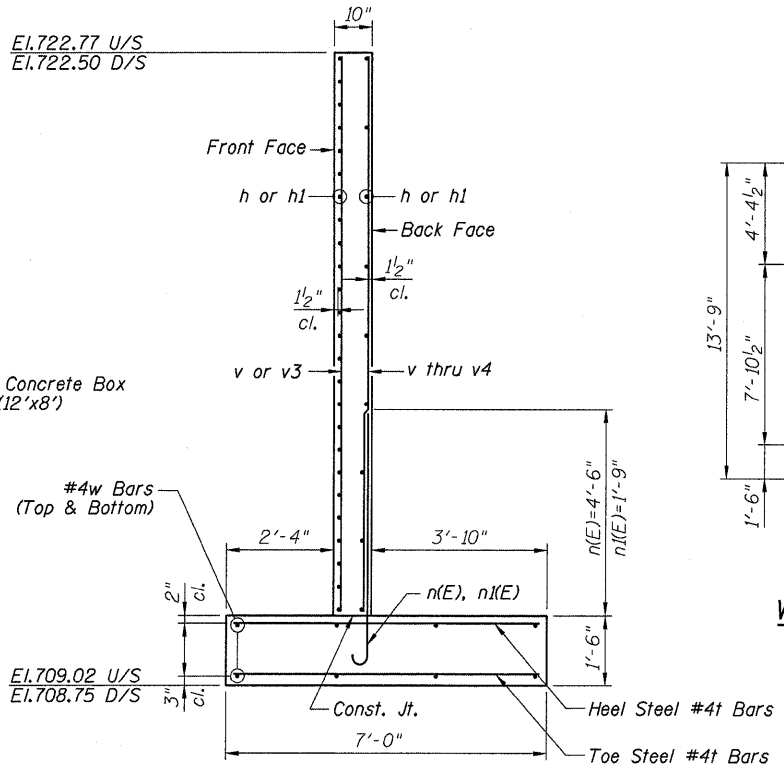
STATE OF ILLINOIS
DEPARTMENT OF TRANSPORTATION

ROUTE NO.	SECTION	COUNTY	SHEET NO.	SHEET NO.
F.A.P. 798	#	FORD	92	45
FED. ROAD DIST. NO. 7		ILLINOIS	FED. AID PROJECT-	

*107-BR, 108-BR, 108-BR-1 Contract #66698

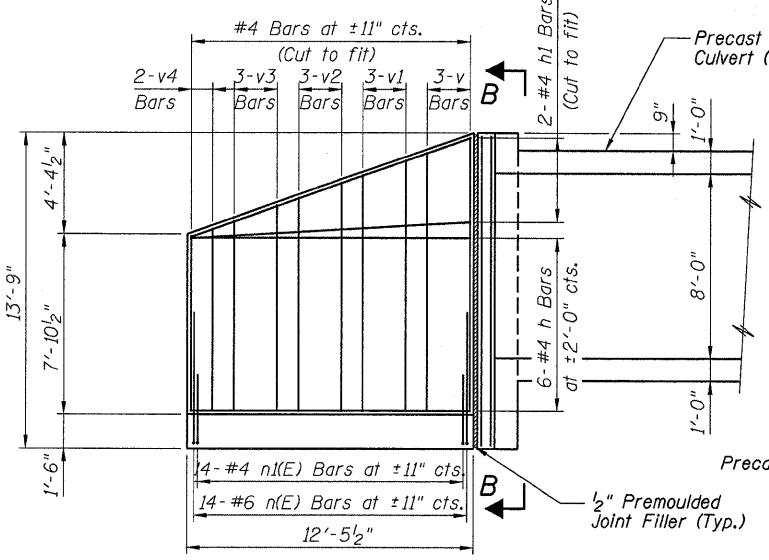


PLAN

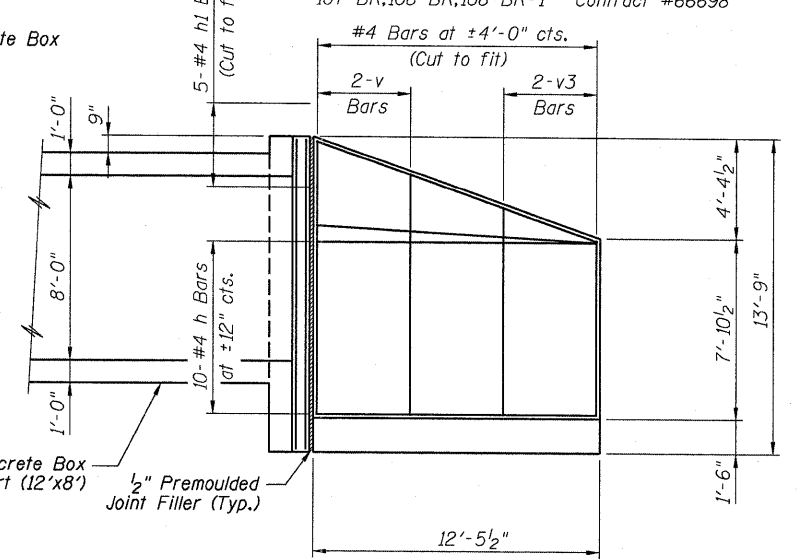


WINGWALL SECTION A-A

Allowable Soil Bearing Capacity = 3,526 psf



WINGWALL REINFORCEMENT (BACKFACE)

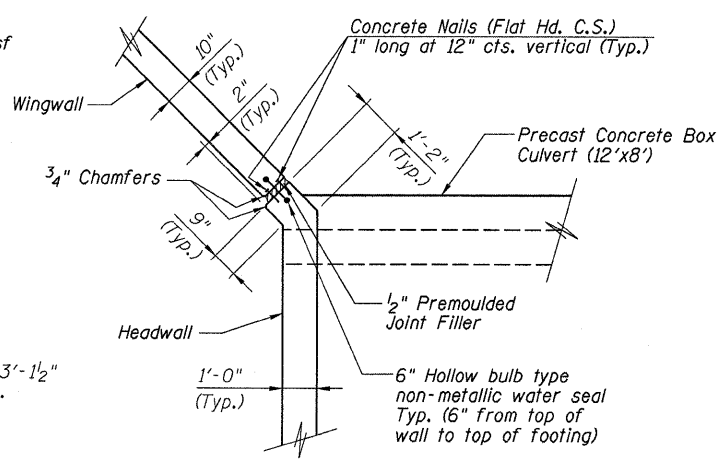


WINGWALL REINFORCEMENT (FRONTFACE)

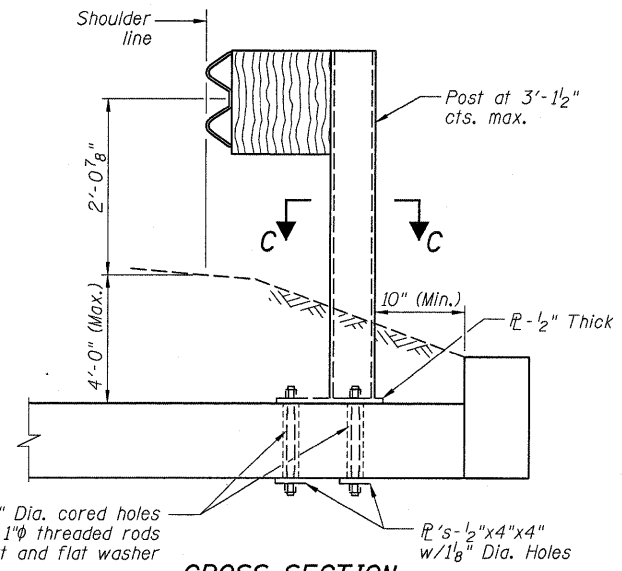
BILL OF MATERIAL

Bar	No.	Size	Length	Shape
d1	16	#4	5'-8"	
d2	16	#4	5'-0"	
h	64	#4	12'-3"	
h1	28	#4	13'-0"	
h2	8	#8	27'-5"	
h3	12	#7	27'-5"	
h4	12	#5	27'-5"	
n(E)	56	#6	6'-4"	
n1(E)	56	#4	3'-5"	
n2(E)	28	#4	6'-0"	
s	56	#4	5'-3"	
s1	28	#4	3'-3"	
s2	14	#4	6'-3"	
t	152	#4	6'-9"	
u	112	#4	5'-9"	
v	20	#4	11'-11"	
v1	12	#4	11'-0"	
v2	12	#4	10'-0"	
v3	20	#4	9'-0"	
v4	8	#4	8'-0"	
v5	12	#4	9'-6"	
v6	8	#4	10'-2"	
v7	8	#4	11'-2"	
w	40	#4	13'-0"	
Concrete Box Culvert		Cu. Yd.	51	
Reinforcement Bars, Epoxy Coated		Pound	790	
Reinforcement Bars		Pound	5,050	

Notes:
1. Quantities shown are for four wingwalls and two headwalls.

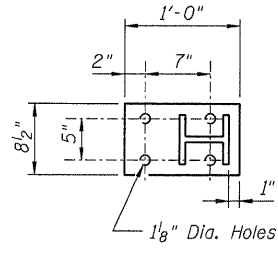


CORNER DETAIL

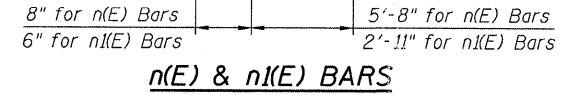


CROSS SECTION

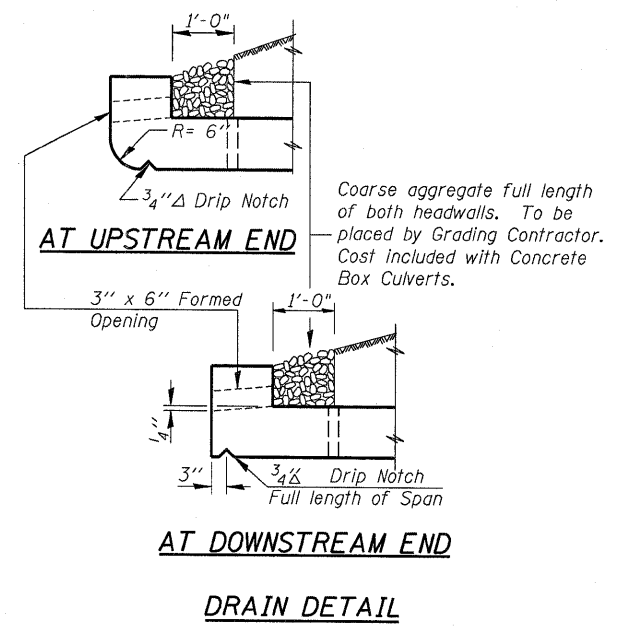
GUARD RAIL MOUNTED ON TOP
SLAB OF BOX CULVERT



SECTION C-C



n(E) & n1(E) BARS



AT UPSTREAM END

AT DOWNSTREAM END

DRAIN DETAIL

DESIGNED	GBC/GMK
CHECKED	GBC/SMK/GMK
DRAWN	RR
CHECKED	SMK

EXAMINED	200
PASSED	

WINGWALL SECTIONS AND DETAILS
ILLINOIS ROUTE 115 OVER DRAINAGE DITCH
F.A.P. ROUTE 798 - SECTION 108-BR-1
FORD COUNTY
STATION 265+74.96
EXISTING STRUCTURE NO. 027-0030
PROPOSED STRUCTURE NO. 027-2015
Scale: None August 2008