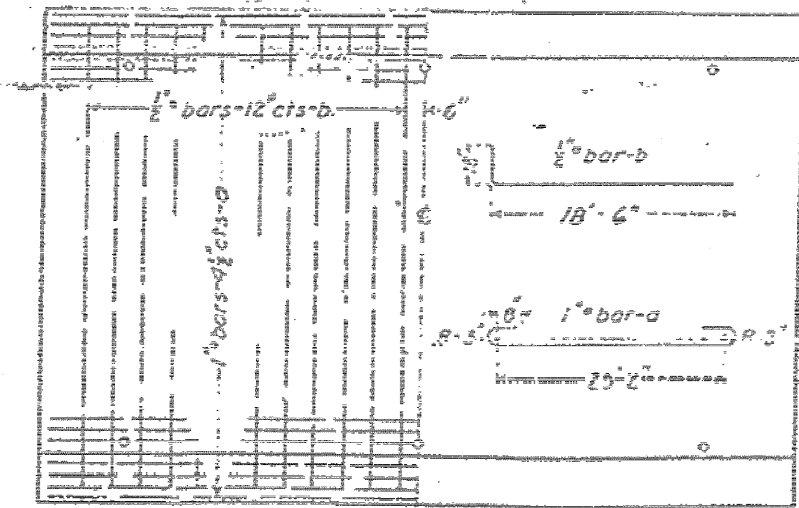
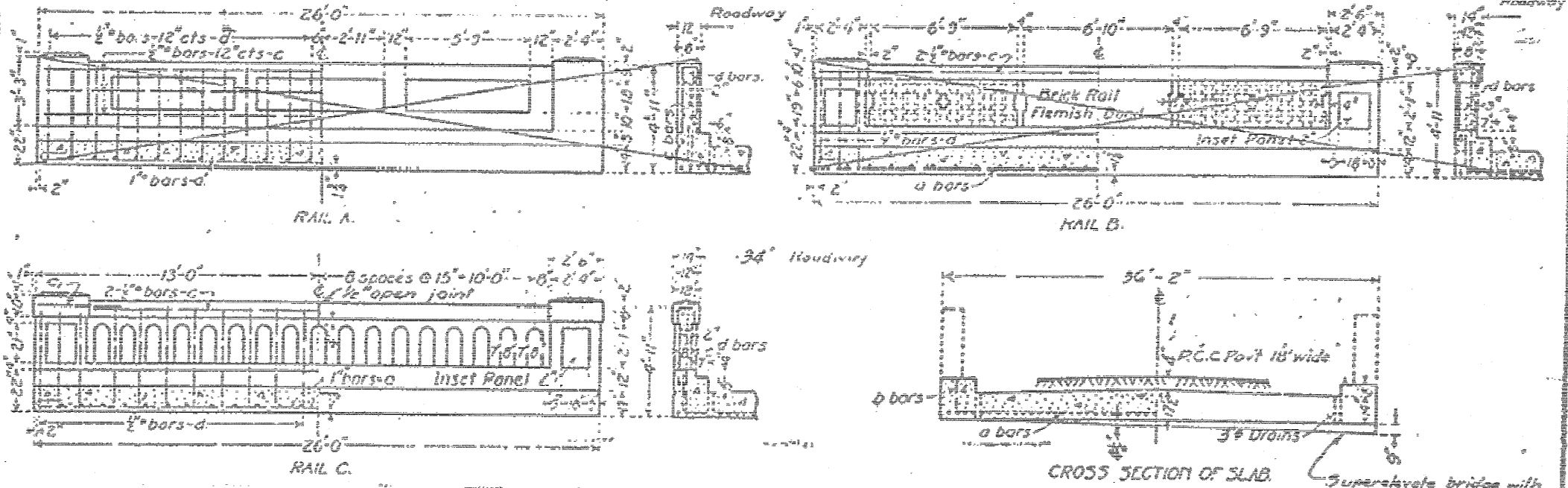


**EXISTING PLANS  
FOR INFORMATION ONLY**

STATE OF ILLINOIS  
DEPARTMENT OF PUBLIC WORKS & BUILDINGS  
DIVISION OF HIGHWAYS

ROAD ROUTE NO.	COUNTY	SEC.	TOTAL SHEETS	SHEET NO.
115	Ford	108B	26	23

**REINFORCED CONCRETE SLAB  
SPAN - TWENTY FOUR FEET  
STR. NO. 027-0030**



**BILL OF MATERIAL**

	16 FT. ROADWAY	18 FT. ROADWAY	20 FT. ROADWAY	24 FT. ROADWAY	36 FT. ROADWAY
RAIL A	Steel Lbs. 5310 Concrete Cu Yds. 280	Steel Lbs. 5212 Concrete Cu Yds. 274	Steel Lbs. 6840 Concrete Cu Yds. 325	Steel Lbs. 6870 Concrete Cu Yds. 318	Steel Lbs. 9160 Concrete Cu Yds. 452
RAIL B	Steel Lbs. 3110 Concrete Cu Yds. 166	Steel Lbs. 3022 Concrete Cu Yds. 161	Steel Lbs. 6150 Concrete Cu Yds. 315	Steel Lbs. 1210 Concrete Cu Yds. 369	Steel Lbs. 8980 Concrete Cu Yds. 447
RAIL C	Steel Lbs. 2830 Concrete Cu Yds. 179	Steel Lbs. 2742 Concrete Cu Yds. 174	Steel Lbs. 6210 Concrete Cu Yds. 323	Steel Lbs. 1400 Concrete Cu Yds. 372	Steel Lbs. 10230 Concrete Cu Yds. 482

PLAN

COMPUTED BY: J. J. Smith  
CHECKED BY: J. J. Smith  
DRAWN BY: J. J. Smith  
CHECKED BY: J. J. Smith  
ASSEMBLED BY: J. J. Smith  
DATE: August 2008

APPROVED BY: J. J. Smith

Use class X Concrete Throughout...  
USE RAIL C, 34' FT ROADWAY.

581 ROUTE-115 SECTION-108B  
FORD COUNTY  
STATION 265 + 75