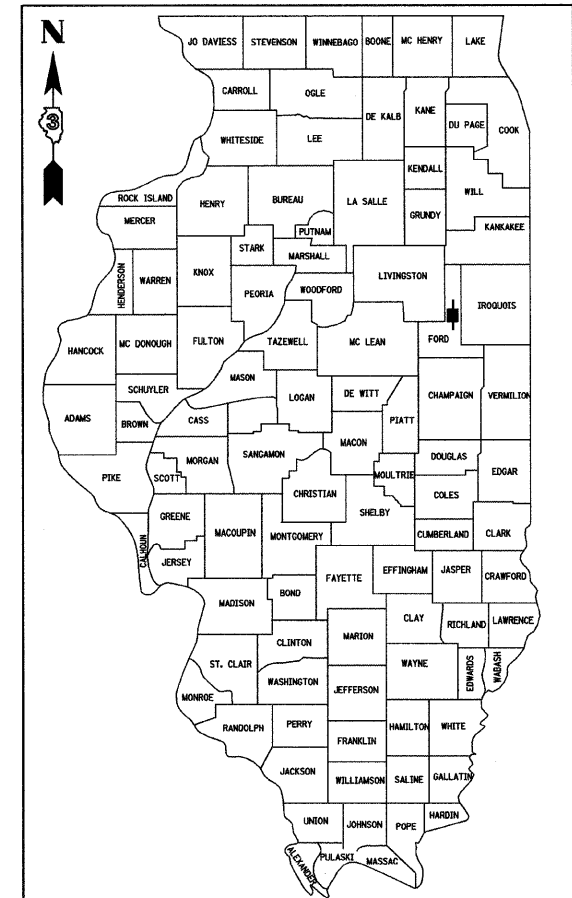


F.A.P. RTE.		SECTION		COUNTY		TOTAL SHEET NO.	
798		107 BR-1		FORD		92 69	
ILLINOIS PROJECT		P-93-039-03		D-93-051-04			

**STATE OF ILLINOIS**  
**DEPARTMENT OF TRANSPORTATION**  
**DIVISION OF HIGHWAYS**  
**PLANS FOR PROPOSED**  
**FEDERAL AID HIGHWAY**  
**FAP ROUTE 798 (IL RTE 115)**  
**SECTION 107 BR-1**  
**PROJECT**  
**FORD COUNTY**

C - 93 - ~~096~~ - 04 <sup>026-07</sup>  
**STRUCTURE REPLACEMENT AT A DRAINAGE DITCH TRIBUTARY TO THE**  
**NORTH FORK OF THE VERMILLION RIVER**  
**R. 9 E., 3rd P.M.**



LOCATION OF SECTION INDICATED THUS: **—■—**

<b>FUNCTION CLASSIFICATION</b>	<b>RURAL MINOR ARTERIAL</b>
<b>DESIGN SPEED</b>	<b>55 MPH</b>
<b>POSTED SPEED</b>	<b>55 MPH</b>
<b>ADT</b>	<b>800 (2007); 900 (2017)</b>
<b>P.V.</b>	<b>76.6%</b>
<b>S.U.</b>	<b>12.7%</b>
<b>M.U.</b>	<b>10.7%</b>

STATE OF ILLINOIS  
DEPARTMENT OF TRANSPORTATION  
DIVISION OF HIGHWAYS

SUBMITTED \_\_\_\_\_ 20 \_\_\_\_\_

\_\_\_\_\_  
DEPUTY DIRECTOR OF HIGHWAYS, REGION ENGINEER

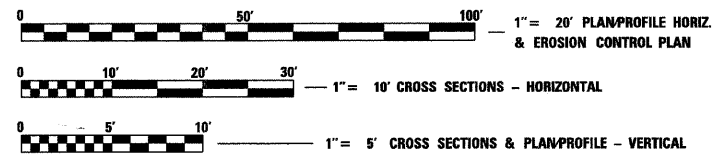
\_\_\_\_\_  
ENGINEER OF DESIGN AND ENVIRONMENT

\_\_\_\_\_  
DIRECTOR OF HIGHWAYS, CHIEF ENGINEER

**PRINTED BY THE AUTHORITY  
OF THE STATE OF ILLINOIS**

- INDEX OF SHEETS**
1. COVER SHEET
  2. GENERAL NOTES, INDEX & STDS. LIST
  3. BILL OF MATERIALS
  4. TYPICAL SECTIONS
  5. SCHEDULE OF QUANTITIES
  - 6-8. PLAN & PROFILE SHEETS
  9. DETOUR PLAN
  10. MISCELLANEOUS DETAILS
  11. EROSION & SEDIMENT CONTROL
  - 12-19. STRUCTURE PLANS
  20. EXISTING STRUCTURE PLANS
  - 21-23. ROADWAY CROSS SECTIONS
  24. CHANNEL CROSS SECTIONS

**HIGHWAY STANDARDS**  
SEE SHEET 2



FULL SIZE PLANS HAVE BEEN PREPARED USING STANDARD ENGINEERING SCALES, REDUCED SIZED PLANS WILL NOT CONFORM TO STANDARD SCALES, IN MAKING MEASUREMENTS ON REDUCED PLANS, THE ABOVE SCALES MAY BE USED.

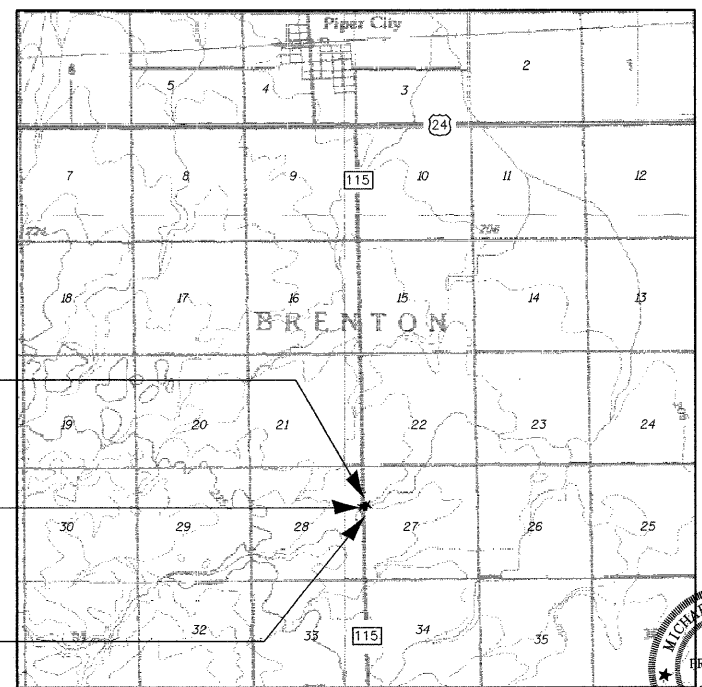
MICROFILMED \_\_\_\_\_  
REEL NUMBER \_\_\_\_\_  
AWARDED \_\_\_\_\_  
RESIDENT ENGINEER \_\_\_\_\_  
AS BUILT CHANGES WERE MADE  
ON THE FOLLOWING SHEETS \_\_\_\_\_

JULIE 1-800-892-0123

DISTRICT 3 NO. (815) 434-6131

PROJECT ENGINEER: DAN DRAPER  
UNIT CHIEF: PAT BRABOY  
TOWNSHIP: BRENTON

CONTRACT NO. ~~56455~~ 66698



LOCATION MAP  
NOT TO SCALE

BEGIN IMPROVEMENTS  
STA. 175+95.00

REPLACE BRIDGE 027-0040  
WITH BRIDGE 027-0095  
STA. 178+88.00

END IMPROVEMENTS  
STA. 181+81.00

GROSS LENGTH = 586.00 FT. = 0.111 MI.  
NET LENGTH = 586.00 FT. = 0.111 MI.



MICHAEL J. BRYANT, P.E., S.E.  
IL LICENSED PROFESSIONAL ENGINEER  
ILLINOIS NO. 44543 EXPIRES NOVEMBER 30, 2007  
IL LICENSED STRUCTURAL ENGINEER  
ILLINOIS NO. 5324 EXPIRES NOVEMBER 30, 2006

5/26/06  
DATE