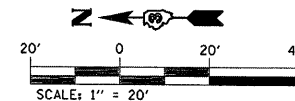
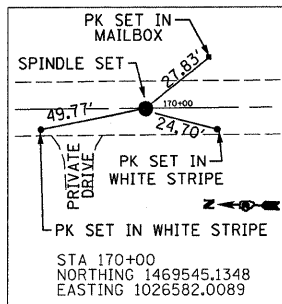


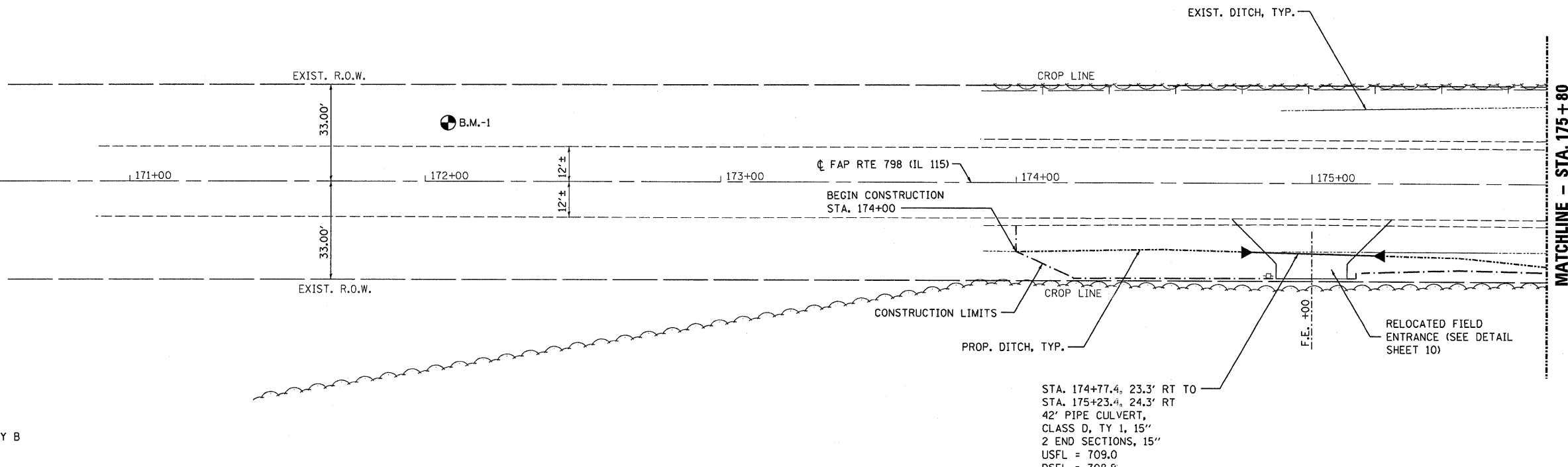
F.A. RTE.	SECTION	COUNTY	TOTAL SHEETS	SHEET NO.
798	107 BR-1	FORD	92	74
STA. 170+00		TO STA. 175+80		
FED. ROAD DIST. NO.	ILLINOIS	FED. AID PROJECT		

CENTERLINE TIE



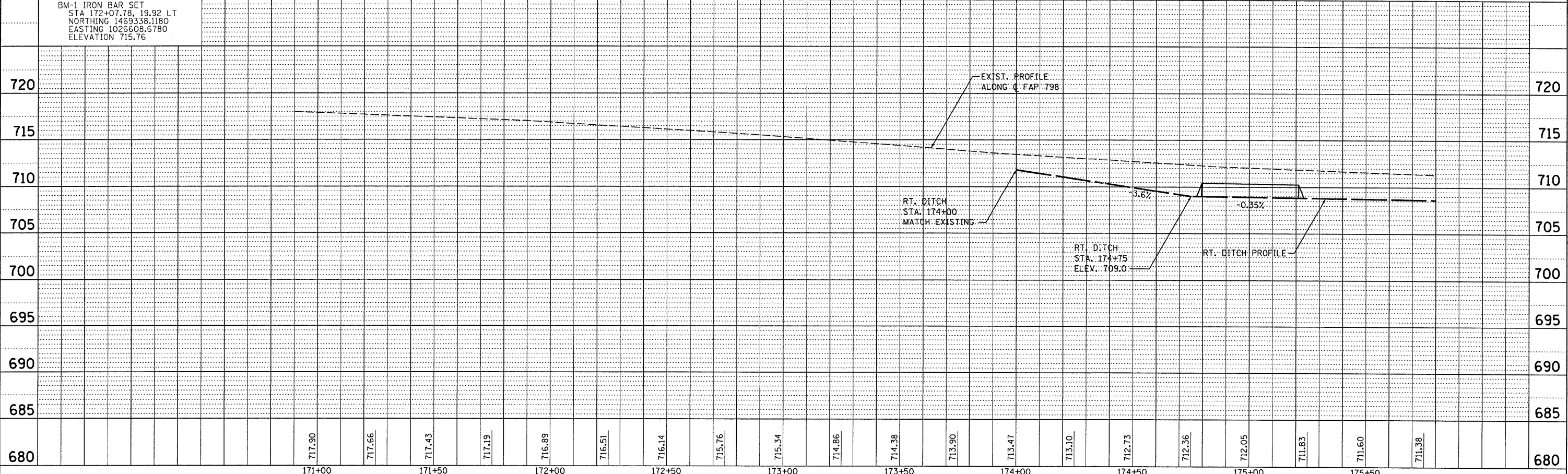
PLAN	DATE
BY	
DATE	
BY	
DATE	
BY	
DATE	

PROFILE	DATE
BY	
DATE	
BY	
DATE	
BY	
DATE	



- LEGEND**
- HMA REMOVAL BUTT JT.
 - PAVEMENT REMOVAL
 - HMA SHOULDERS
 - AGGREGATE SHOULDERS, TY B
 - RIPRAP, CLASS A4

STA. 174+77.4, 23.3' RT TO
 STA. 175+23.4, 24.3' RT
 42' PIPE CULVERT,
 CLASS D, TY 1, 15"
 2 END SECTIONS, 15"
 USFL = 709.0
 DSFL = 708.8



BM-1 IRON BAR SET
 STA 172+07.78, 19.92 LT
 NORTHING 1469338.1180
 EASTING 1026608.6780
 ELEVATION 715.76