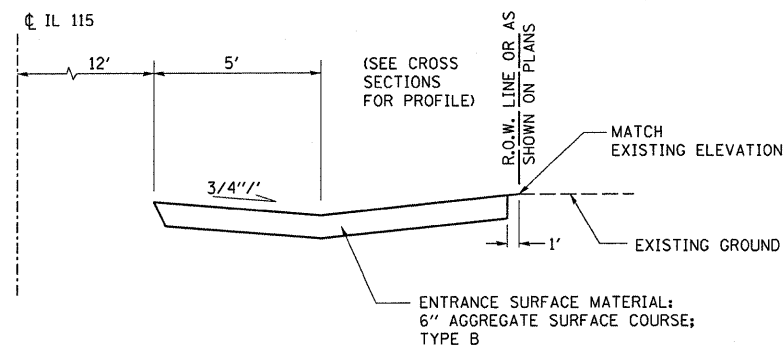
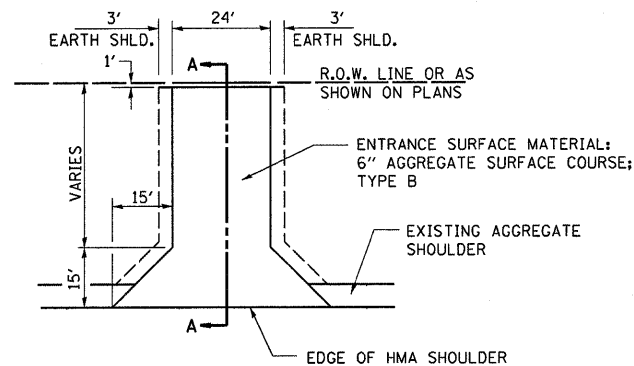
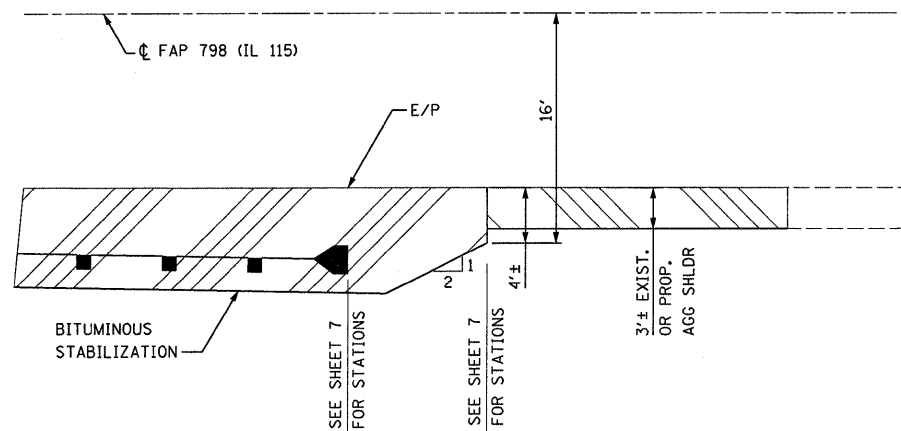


| | | | | |
|---------------------|----------|---------------------------|--------------|-----------|
| F.A. RTE. | SECTION | COUNTY | TOTAL SHEETS | SHEET NO. |
| 798 | 107 BR-1 | FORD | 92 | 78 |
| STA. | | TO STA. | | |
| FED. ROAD DIST. NO. | | ILLINOIS FED. AID PROJECT | | |

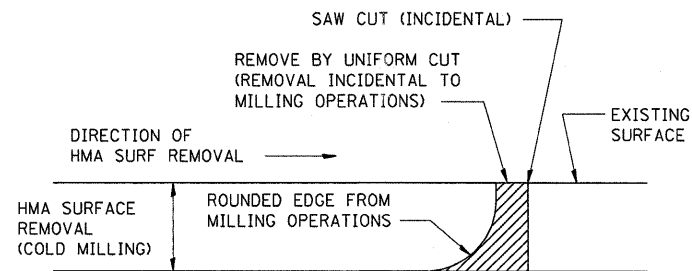


SECTION A-A

FIELD ENTRANCE DETAIL
STA. 175+00 RT

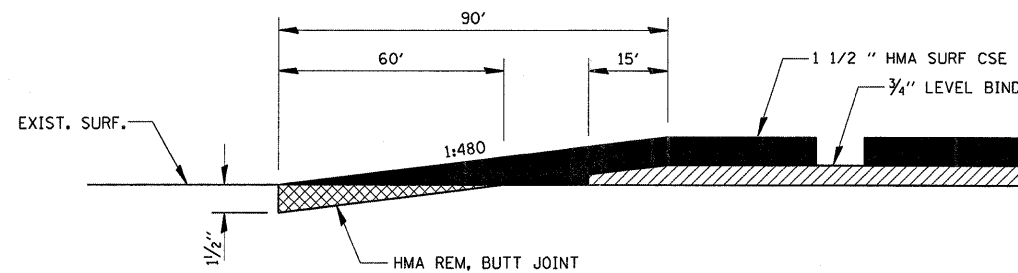


HMA SHOULDER STUB DETAIL
AT GUARDRAIL TERMINATION
MODIFIED STANDARD 630201

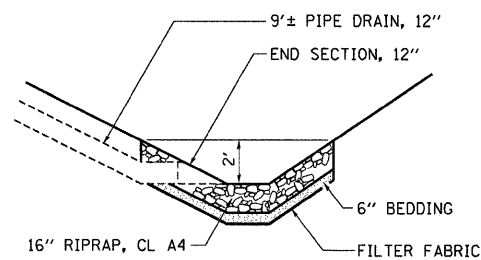


NOTE: WHEN MILLING OPERATIONS PRODUCE A ROUNDED EDGE, THEN A SAW CUT SHALL BE USED TO MANUFACTURE A PERPENDICULAR EDGE AS SHOWN IN THE DETAIL. THE ENGINEER SHALL BE THE SOLE JUDGE CONCERNING THE USE OF THIS DETAIL.

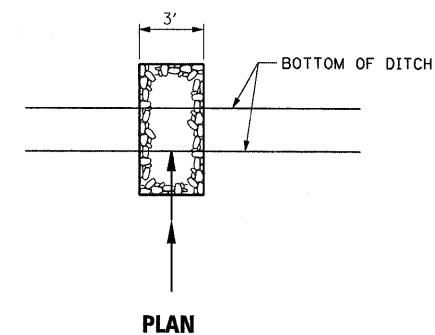
HMA DETAIL AT BUTT JOINTS



BUTT JOINT DETAIL



SECTION



PLAN

RIPRAP DETAIL AT BRIDGE APPROACH DRAIN OUTLET

(REFER TO STD. 609006)
STA. 178+31, 28' LT, R. ELEV. 707.1
STA. 178+47, 28' RT, R. ELEV. 707.7
STA. 179+29, 28' LT, R. ELEV. 706.9
STA. 179+45, 28' RT, R. ELEV. 706.9
(ADJUST STATIONS AS NEEDED TO MISS GUARDRAIL TERMINAL POST)

| REVISIONS | |
|-----------|------|
| NAME | DATE |
| | |
| | |
| | |
| | |
| | |
| | |
| | |
| | |
| | |

ILLINOIS DEPARTMENT OF TRANSPORTATION
FAP ROUTE 798 (IL RTE 115)
SEC 107 BR-1, FORD COUNTY

MISCELLANEOUS DETAILS

SCALE: VERT.
HORIZ.
DATE

DRAWN BY
CHECKED BY

PLOT DATE = Aug 25, 2009 09:21:03 AM
FILE NAME = I:\DOT\CORR\FORD\107-30872\107-30872-107-30872-107-30872.dgn
PLOT SCALE = 5/8" = 1' / IN.
REFERENCE = #REF#