

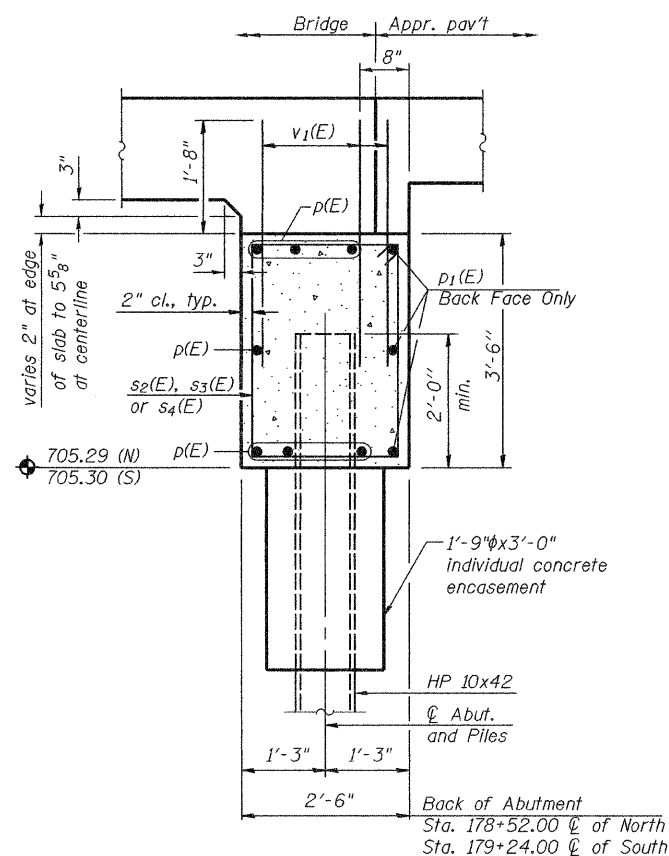
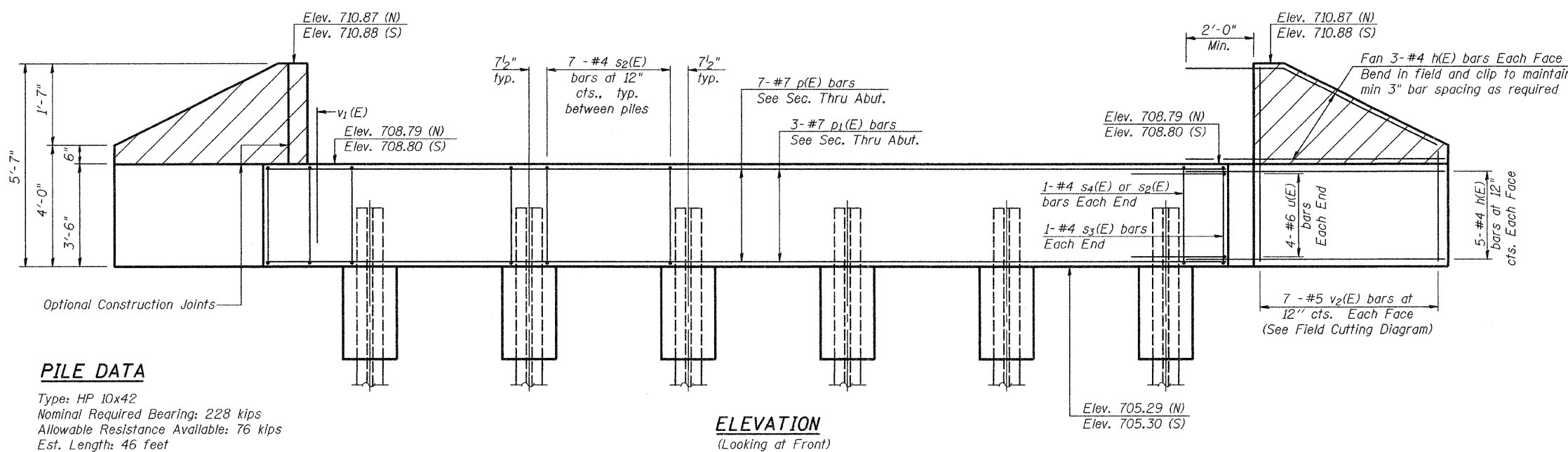
STATE OF ILLINOIS
DEPARTMENT OF TRANSPORTATION

ROUTE NO.	SECTION	COUNTY	TOTAL SHEETS	SHEET NO.
FAP 798	107 BR-1	FORD	92	84
FED. ROAD DIST. NO. 7		ILLINOIS	FED. AID PROJECT	

Contract # 66698

SHEET NO. 5
8 SHEETS

Notes: Reinforcement bars designated (E) shall be epoxy coated.
Hatched area to be poured after superstructure is in place



SEC. THRU ABUT.

BILL OF MATERIAL (2 ABUTS)

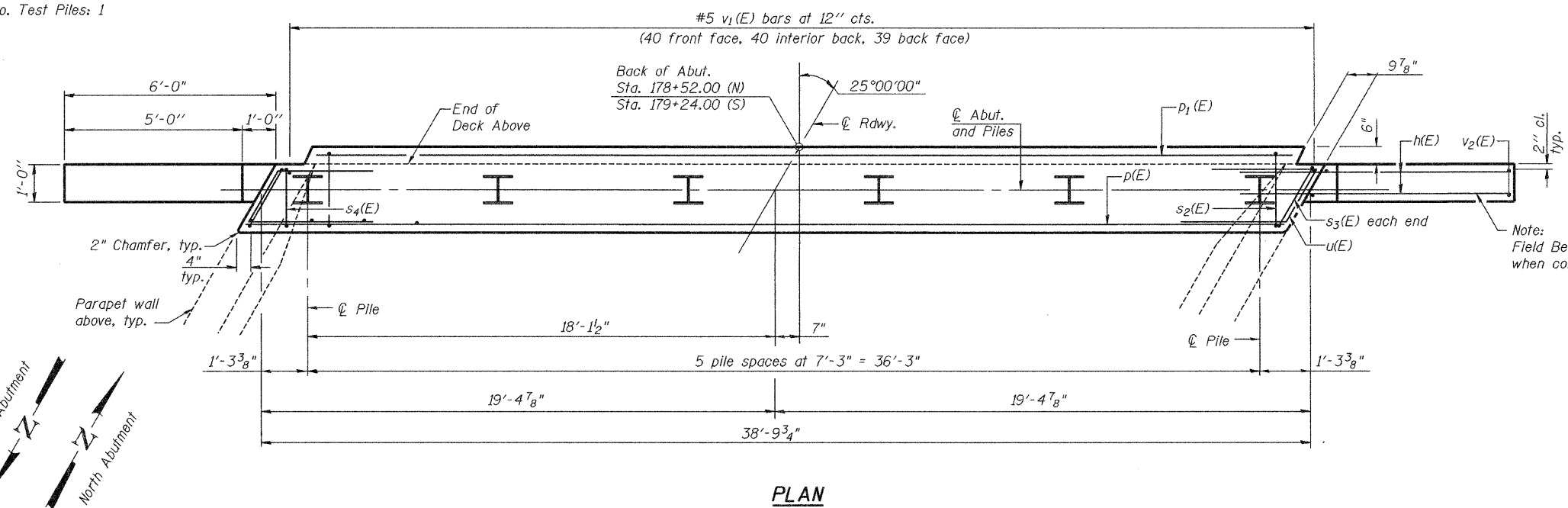
Bar	No.	Size	Length	Shape
h(E)	64	#4	8'-3"	—
p(E)	14	#7	38'-5"	—
p1(E)	6	#7	36'-10"	—
s2(E)	72	#4	11'-5"	□
s3(E)	4	#4	10'-9"	□
s4(E)	2	#4	10'-5"	□
u(E)	16	#6	9'-9"	∟
v1(E)	238	#5	3'-8"	—
v2(E)	28	#5	8'-11"	—
Concrete Structures		Cu. Yd.	28.3	
Reinforcement Bars, Epoxy Coated		Pound	3900	
Structure Exc. (N)		Cu. Yd.	60	
Structure Exc. (S)		Cu. Yd.	60	
Furnishing Steel Piles HP 10x42		Foot	506	
Driving Piles		Foot	506	
Test Piles Steel HP 10x42		Each	1	

SUBSTRUCTURE - ABUTMENTS
IL RTE 115 OVER DRAINAGE DITCH
TRIBUTARY TO NORTH VERMILLION RIVER
FAP RTE 798 SECTION 107 BR-1
FORD COUNTY
STATION 178+88.00
S.N. 027-0095

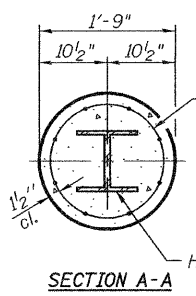
PILE DATA

Type: HP 10x42
Nominal Required Bearing: 228 kips
Allowable Resistance Available: 76 kips
Est. Length: 46 feet
No. Production Piles: 11
No. Test Piles: 1

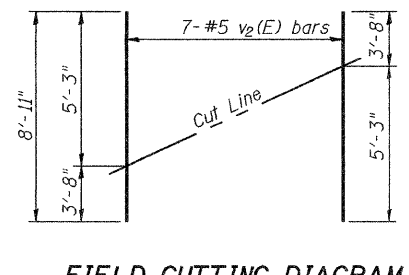
ELEVATION
(Looking at Front)



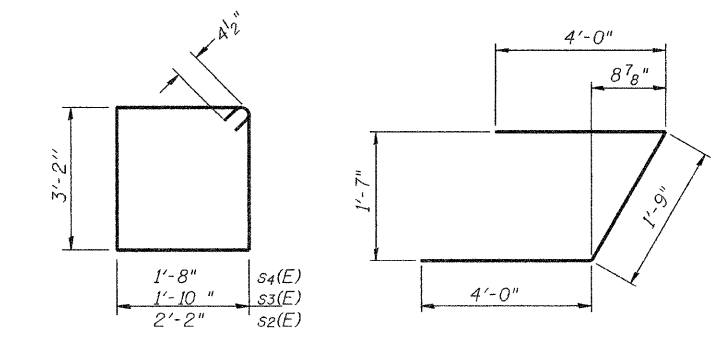
PLAN



PILE ENCASEMENT DETAIL



FIELD CUTTING DIAGRAM



BARS s2(E), s3(E) & s4(E) BAR u(E)

DESIGNED MSJ
CHECKED MJB
DRAWN MSJ
CHECKED WCC

AI-R