

STATE OF ILLINOIS
DEPARTMENT OF TRANSPORTATION

ROUTE NO.	SECTION	COUNTY	TOTAL SHEETS	SHEET NO.
FAP 798	107 BR-1	FORD	92	85
FED. ROAD DIST. NO. 7		ILLINOIS	FED. AID PROJECT	

SHEET NO. 6
8 SHEETS

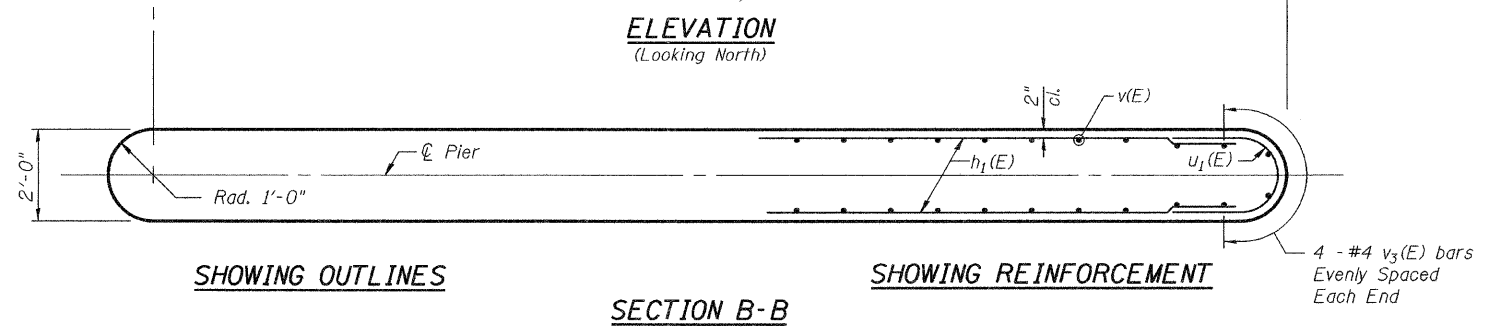
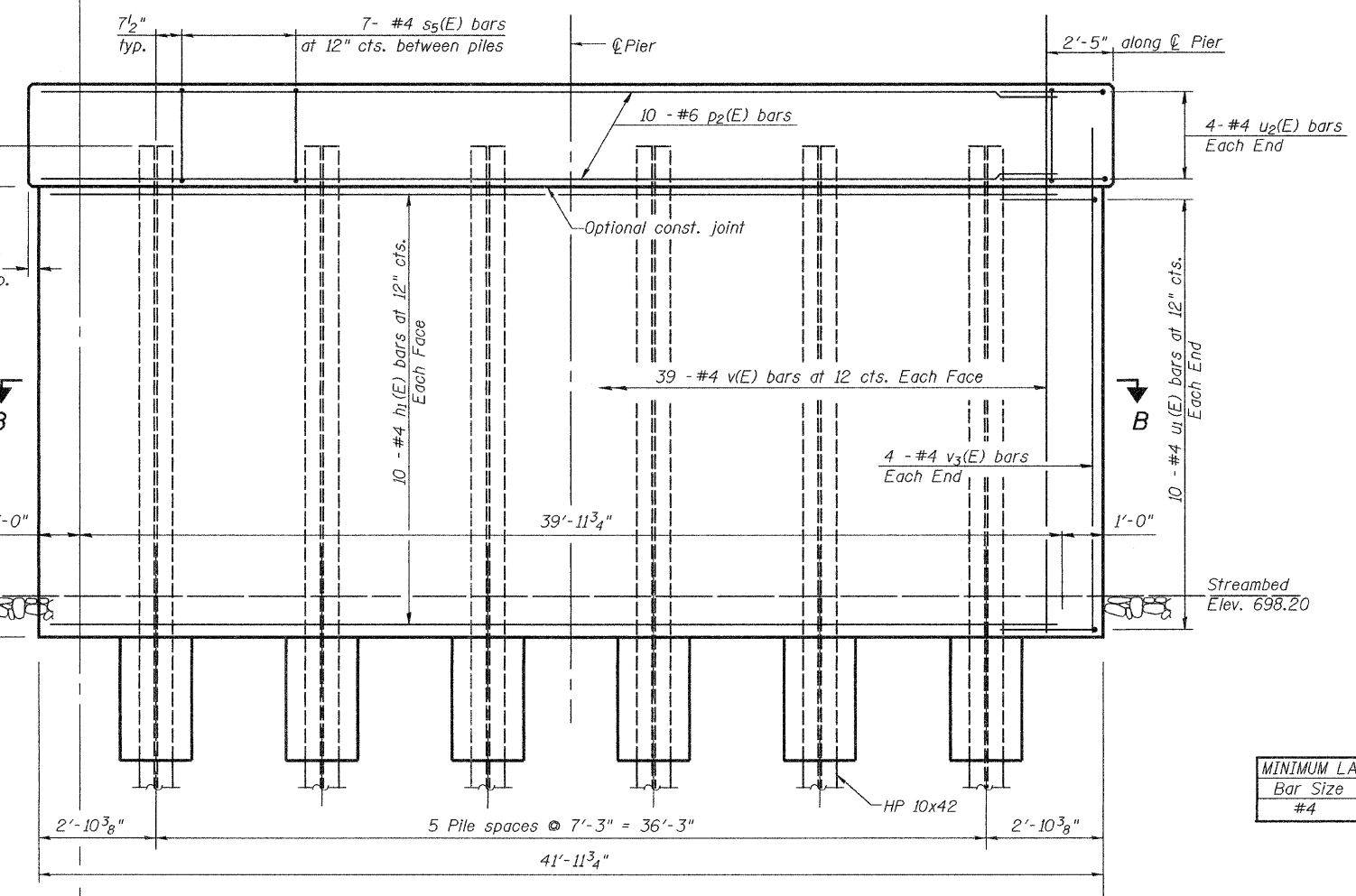
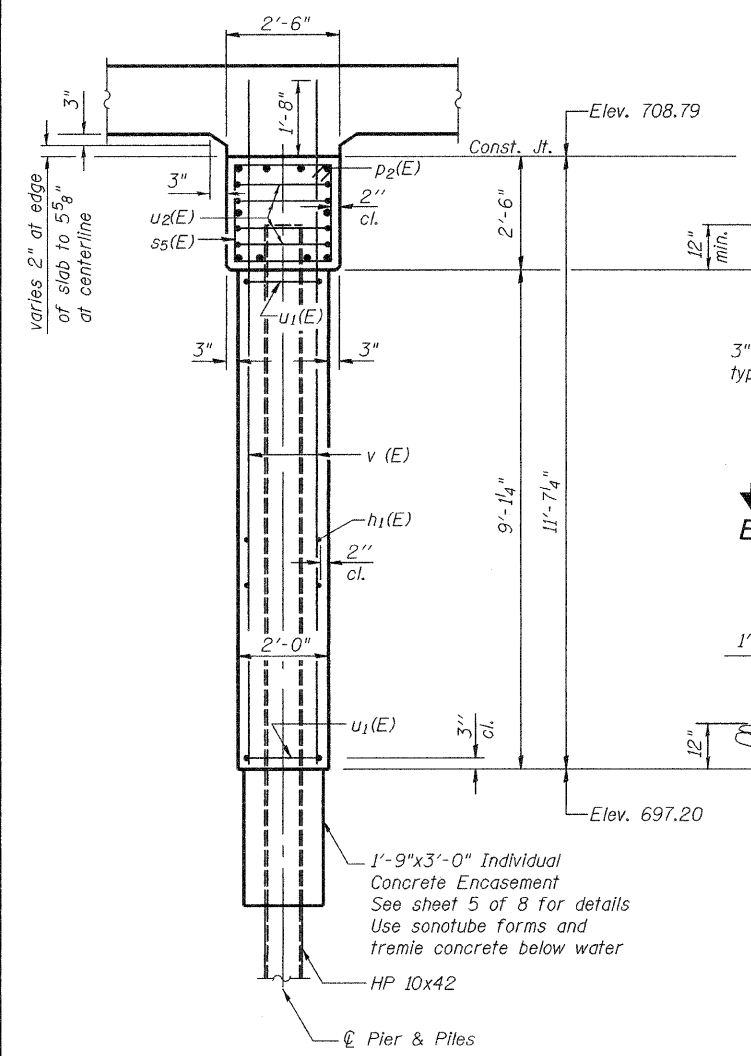
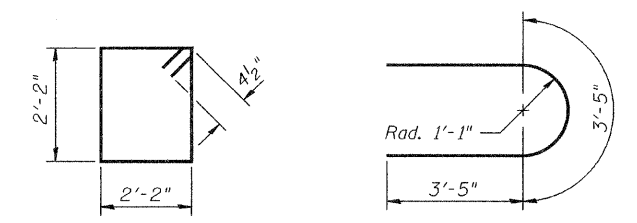
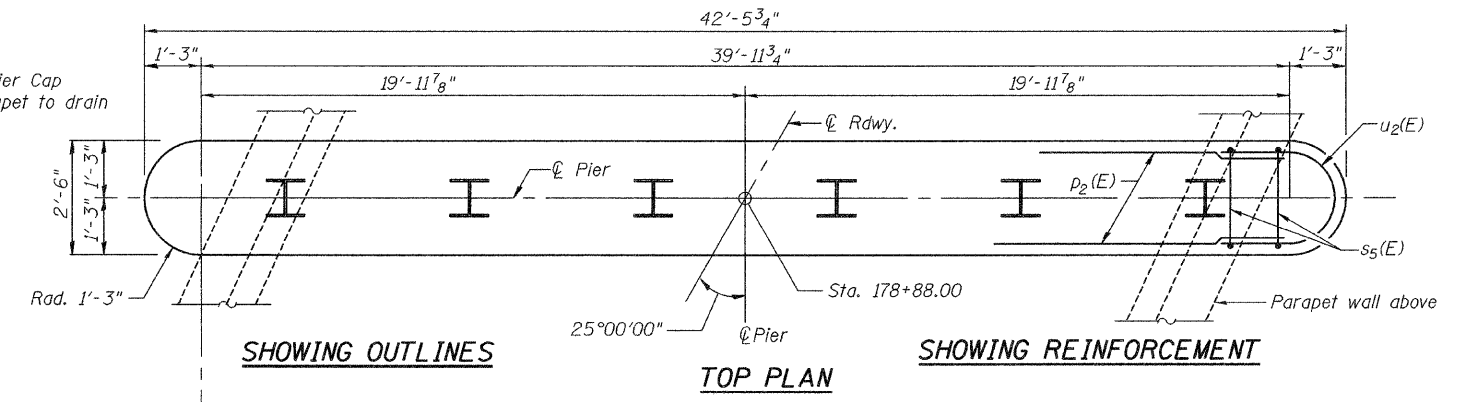
Contract # 66698

Notes: Reinforcement bars designated (E) shall be epoxy coated.
All Edges shall have standard 2" Chamfers

PILE DATA

Type: HP 10x42
Nominal Required Bearing: 396 kips
Allowable Resistance Available: 132 kips
Est. Length: 52 feet
No. Production Piles: 5
No. Test Piles: 1

Note:
Slope top of Pier Cap outside of parapet to drain



BILL OF MATERIAL

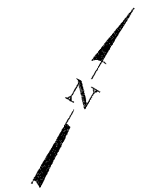
Bar	No.	Size	Length	Shape
h1(E)	20	#4	40'-0"	—
p2(E)	10	#6	40'-0"	—
s5(E)	39	#4	9'-5"	□
u1(E)	20	#4	9'-6"	U
u2(E)	8	#4	10'-3"	U
v(E)	78	#4	13'-3"	—
v3(E)	8	#4	11'-3"	—

Concrete Structures	Cu. Yd.	45.5
Reinforcement Bars, Epoxy Coated	Pound	2320
Furnishing Steel Piles HP 10x42	Foot	260
Driving Piles	Foot	260
Test Pile Steel HP 10x42	Each	1

Reinforcement Bars designated (E) shall be epoxy coated.

MINIMUM LAP LENGTHS	
Bar Size	Length
#4	2'-0"

DESIGNED	MSJ
CHECKED	MJB
DRAWN	MSJ
CHECKED	WCC



SUPERSTRUCTURE - PIER
IL RTE 115 OVER DRAINAGE DITCH
TRIBUTARY TO NORTH VERMILLION RIVER
FAP RTE 798 SECTION 107 BR-1
FORD COUNTY
STATION 178+88.00
S.N. 027-0095