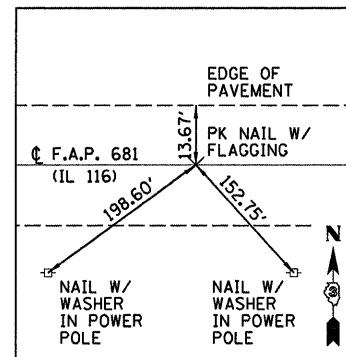
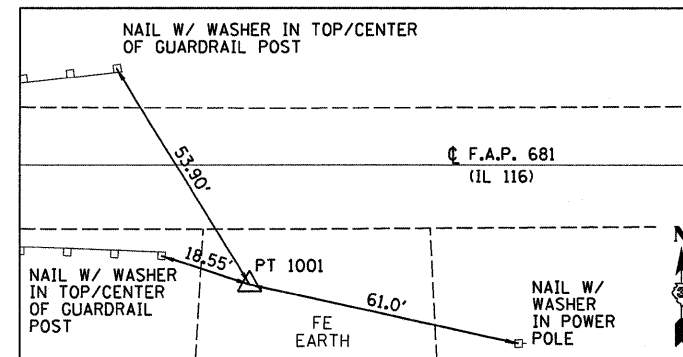


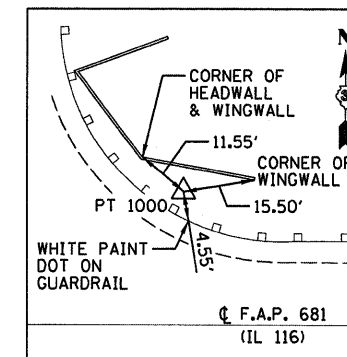
IL 116
STA 311+00, 0.00' RT/LT



IL 116
STA 325+00, 0.00' RT/LT



IL 116
STA 318+89.76, 25.04' RT



IL 116
STA 316+25.88, 28.03' LT

BENCHMARK #100/#1895
STA 316+84.00, 62' RT
ELEV=658.09
STAINLESS STEEL ROD IN SLEEVE

BENCHMARK #101
STA 315+51.51, ±83' RT
ELEV=657.63
RAILROAD SPIKE IN POWER
POLE @ S.W. CORNER OF
INTERSECTION OF RTE. 116
& C.R. 200 E

FILE NAME =	USER NAME = carpenterdj	DESIGNED - JML	REVISED -
c:\projects\ep03584\consult\07_0070213_	tes.dgn	DRAWN - DJM	REVISED -
PLOT SCALE = 1.0000' / IN.	CHECKED - MSW	REVISED -	REVISED -
PLOT DATE = Aug 07, 2008 - 09:29:14 AM	DATE - 04/09/08	REVISED -	REVISED -

STATE OF ILLINOIS
DEPARTMENT OF TRANSPORTATION

SURVEY TIES AND BENCHMARKS

F.A.P. RTE.	SECTION	COUNTY	TOTAL SHEETS	SHEET NO.
681	116 BR-1	IROQUOIS	28	7
CONTRACT NO. 66730				