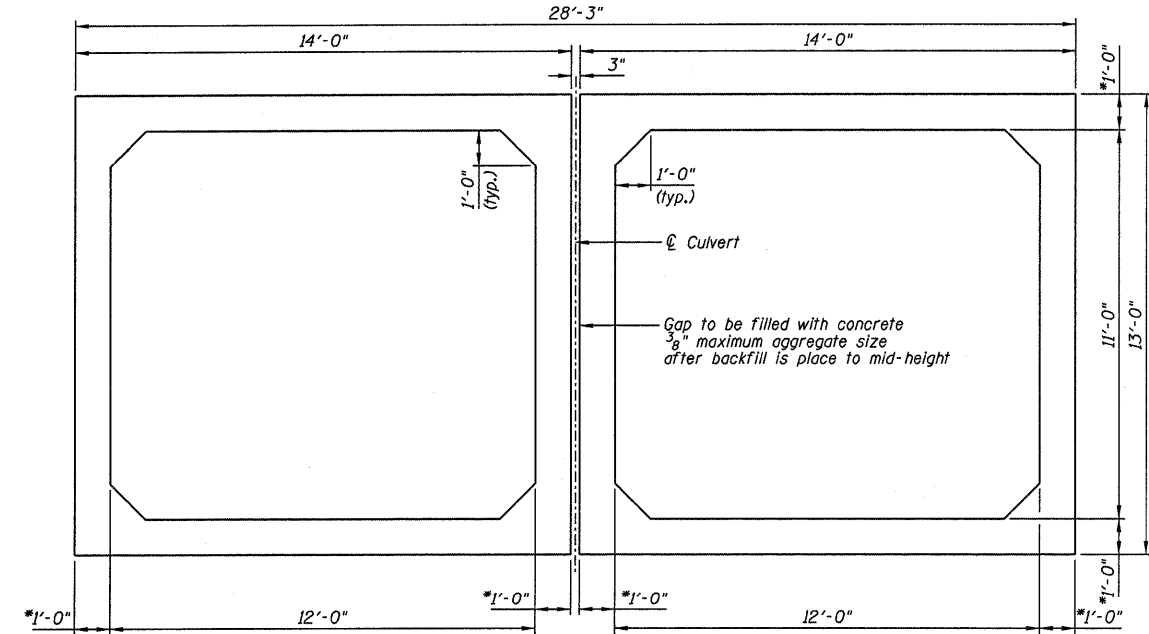
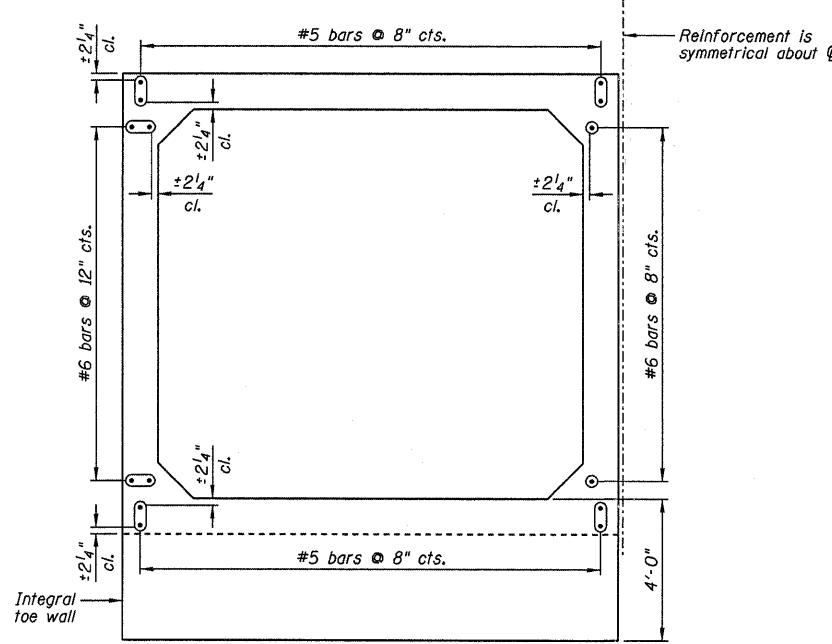


LONGITUDINAL SECTION
 (Looking East @ C of Culvert,
 roadway dimensions @ right angles to roadway)

Remove unsuitable soil and replace with Porous Granular Embankment, Special. Limits shall extend to 2'-0" outside of the culvert barrel walls



SECTION THRU PRECAST CONCRETE BARREL



PRECAST CONCRETE CULVERT END ELEVATION

Sections are symmetrical about C culvert.

Bar	Extension
#5	1'-8"
#6	2'-0"

BILL OF MATERIAL

Item	Unit	Quantity
Removal and Disposal of Unsuitable Material	Cu Yd	160
Porous Granular Embankment, Special	Cu Yd	160
Precast Concrete Box Culvert 12'x11' (M273)	Foot	60

NOTES:

- 1.) *Confirm slab and wall thickness with Precaster.
- 2.) For Cast-In-Place concrete portions, see Sheet B3-B6.
- 3.) B.O.F. denotes Bottom Of Footing.
- 4.) Cost of reinforcing bars extending from precast barrels included with the cost of precast concrete box culverts.