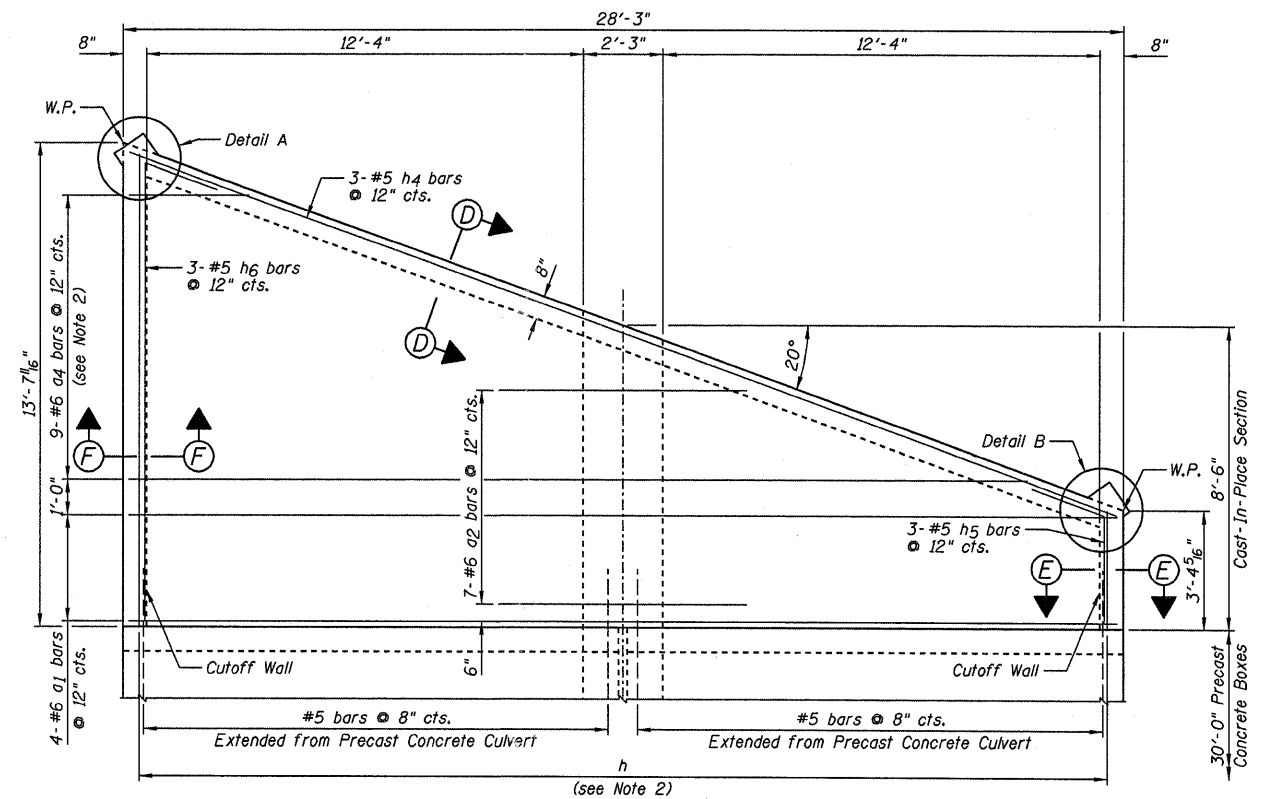
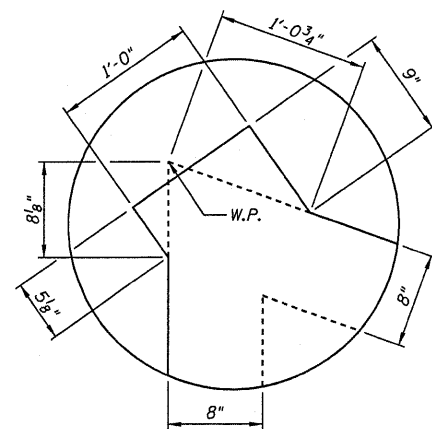
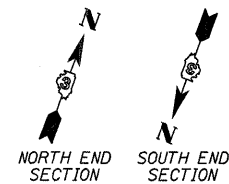


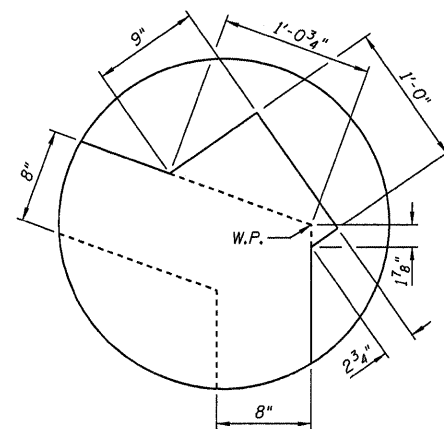
TOP MAT OF REINFORCEMENT PLAN



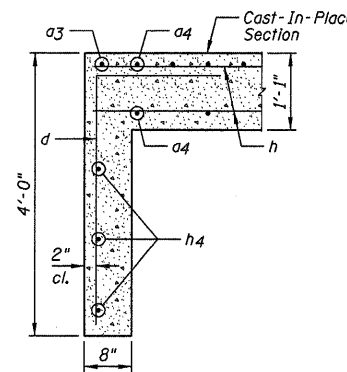
BOTTOM MAT OF REINFORCEMENT PLAN



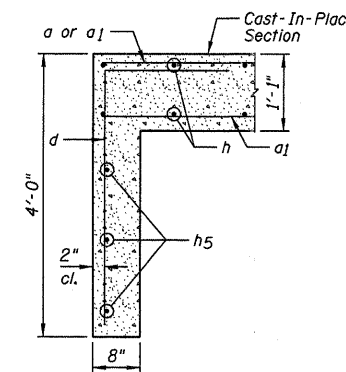
DETAIL A



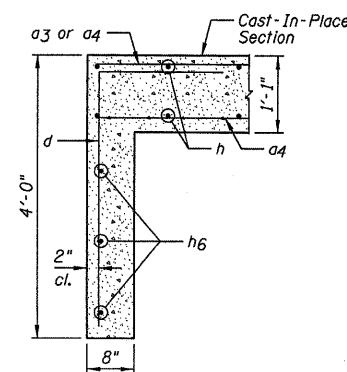
DETAIL B



SECTION D-D



SECTION E-E



SECTION F-F

NOTES:

- 1.) Order a3 bars full length, cut according to Bar Cutting Diagram on Sheet B3. Use remainder of bars in opposite end.
- 2.) Order a4 and h bars full length, cut according to Bar Cutting Diagram on Sheet B3. Use remainder of bars in opposite mat.
- 3.) For Bill of Material, see Sheet B3.
- 4.) W.P. denotes Working Point.

FILE NAME =	USER NAME = carpenterdj	DESIGNED - JML	REVISED -	STATE OF ILLINOIS DEPARTMENT OF TRANSPORTATION	CAST-IN-PLACE CONCRETE CULVERT BOTTOM SLAB PLANS AND SECTIONS	F.A.P. RTE.	SECTION	COUNTY	TOTAL SHEETS	SHEET NO.	
c:\projects\ep03504\consult\14-15.007021	00_b04-b05_s1abs.dgn	DRAWN - DJM	REVISED -			681	116 BR-1	IROQUOIS	28	15	
PLOT SCALE = 2.6667' / IN.	CHECKED - MSW	REVISIONS -	REVISIONS -			CONTRACT NO. 66730					
PLOT DATE = Aug 07, 2008 - 09:09:55 AM	DATE - 04/09/08	REVISIONS -	REVISIONS -			FED. ROAD DIST. NO. 3 ILLINOIS FED. AID PROJECT					