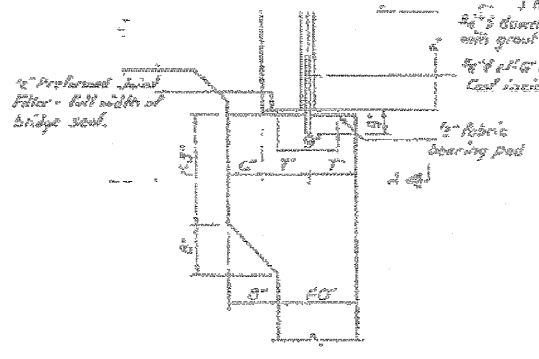
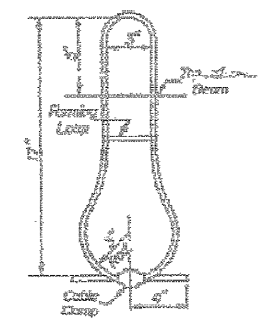
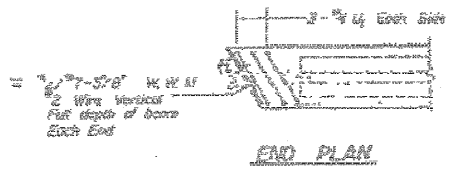
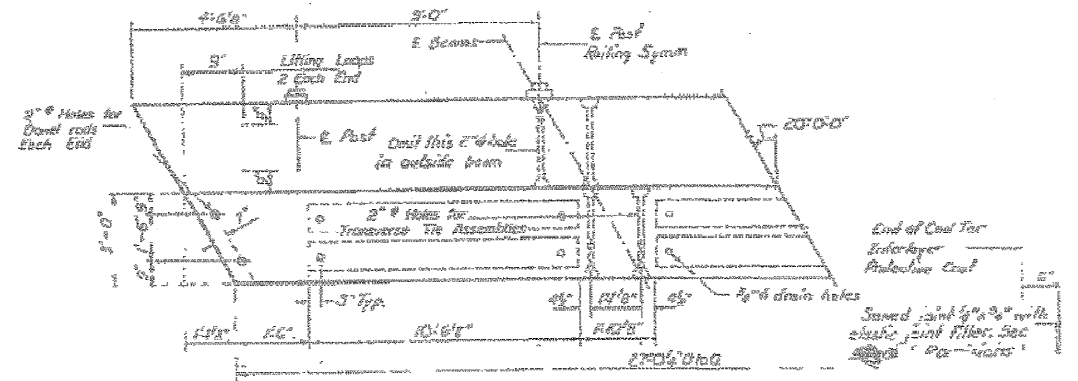
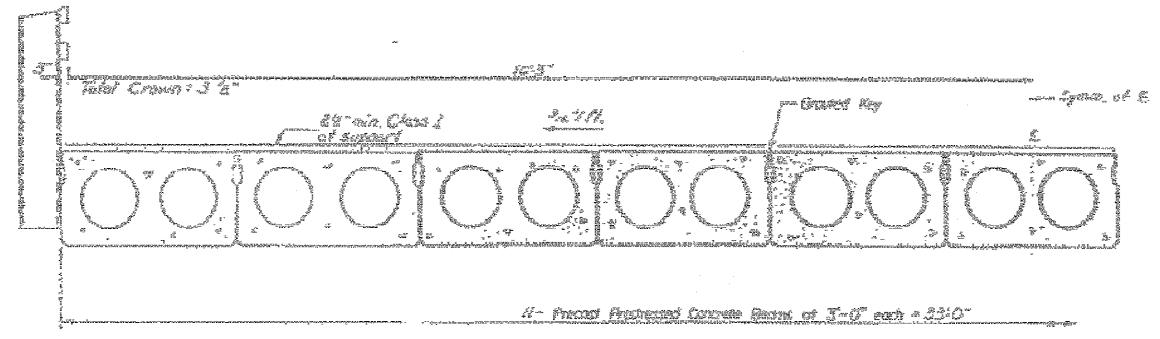
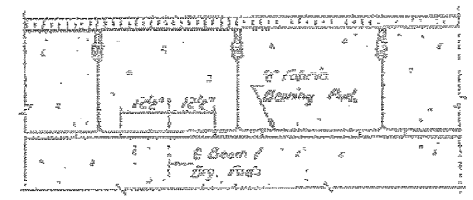
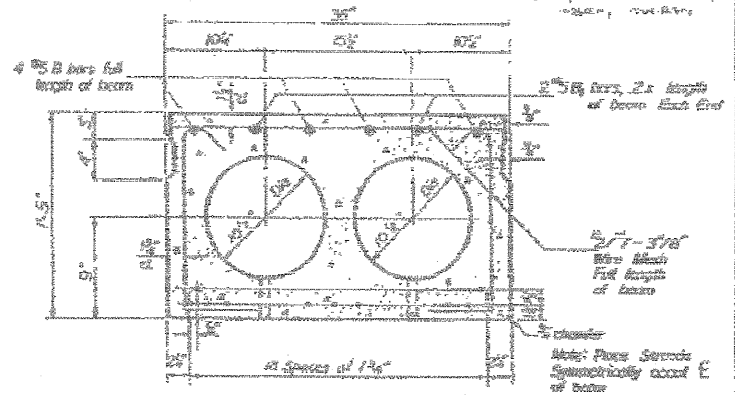
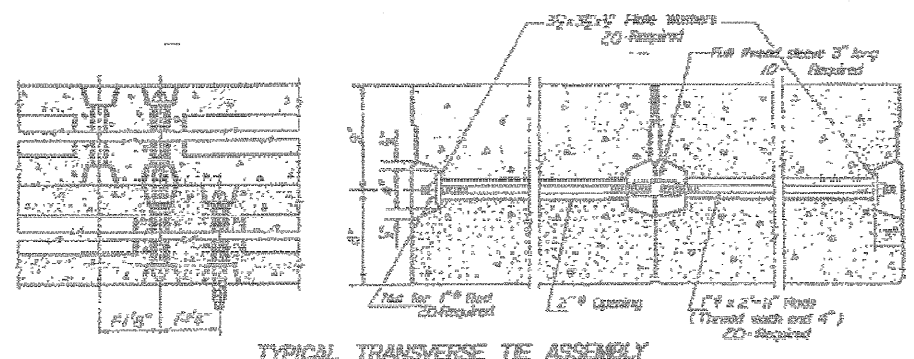
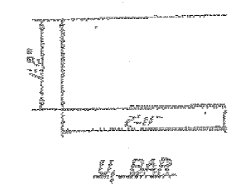
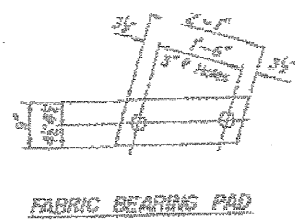


STATE OF ILLINOIS
DEPARTMENT OF PUBLIC WORKS & BUILDINGS
DIVISION OF HIGHWAYS

DATE	BY	REVISION	SHEET NO. 3
			OF 3 SHEETS



GENERAL NOTES

Prestressing steel shall be non-phosphated high strength stress-relieved 7-wire strand. The strand diameter shall be 7/8" and the strand cross-sectional area shall be 6.163 sq. in. Lifting loops shall be 1/2" diameter, 6163 cross wire rope with fiber core and shall have a minimum ultimate tensile strength of 13700 lbs. The 1 1/2" rods in the transverse tie assembly shall be tightened to a snug fit and the strands set. Fasteners that restrain transverse tie bar on outside beam shall be fitted with groof after transverse tie assembly is in place. Longitudinal shear keys shall be placed along any side of the slab and P.C. member. After beams have been erected, keys for the strand anchors shall be drilled into the sub-structure and the anchor details shall be placed in place. Dowel rods shall be ASTM A-306 or ASTM A-415. Transverse tie rods shall be ASTM A-306, Grade 70-80. After fabrication the transverse tie assemblies (tie rods, nuts, washers and spacers) shall be pre-assembled as indicated on the drawings and placed on the beams, at bearing ends, at corner angles, and at opening longitudinal shear keys as indicated in each case bid for Prestress Concrete Deck Beams. See sheet # 2 for location of the casting pad anchor bolts.

Qty	Size	Length	Shape
4	1/2"	20'-0"	Round
4	1/2"	20'-0"	Round
4	1/2"	20'-0"	Round

BILL OF MATERIAL

Prestress Concrete Deck Beams	Qty: 1	Vol: 2.82
-------------------------------	--------	-----------

SUPERSTRUCTURE DETAILS
SRI, RT 116, SEC. 116 BR-3
IROQUOIS COUNTY
STA. 317+52

DESIGNED	J.P. Dyer	DATE	FEB. 25 1971
CHECKED	H. J. ...	APPROVED	H. J. ...
DRAWN	...	DATE	04/09/08

FOR INFORMATIONAL
USE ONLY