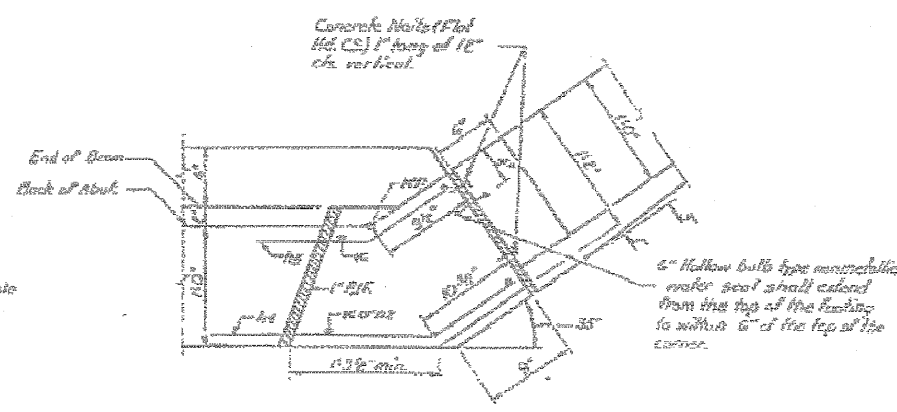
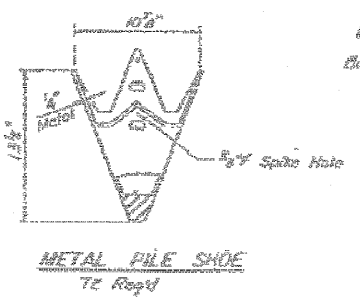
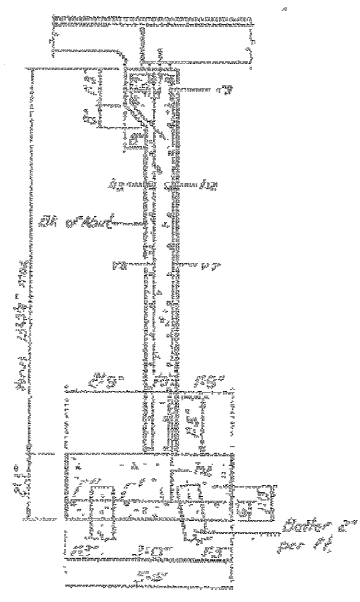
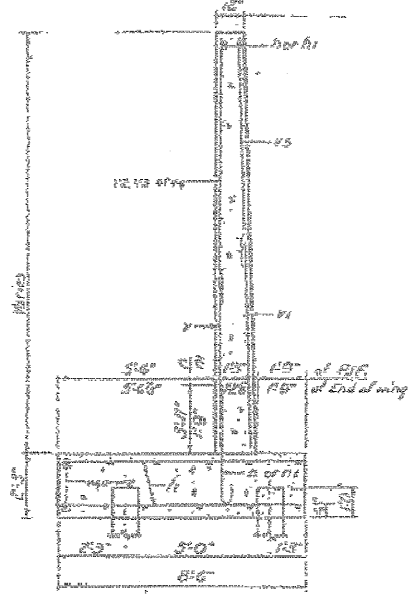
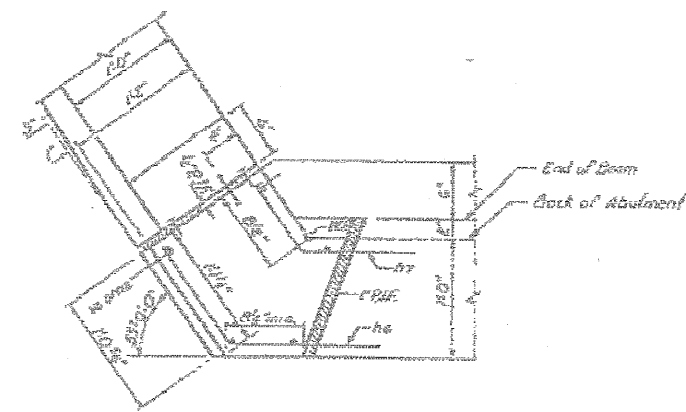
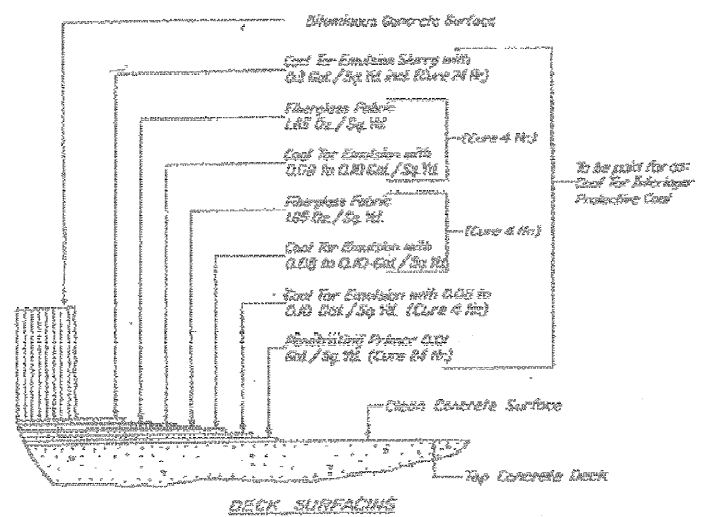


STATE OF ILLINOIS  
DEPARTMENT OF PUBLIC WORKS & BUILDINGS  
DIVISION OF HIGHWAYS

DATE	BY	REVISION	NO.	DESCRIPTION



**TWO ABUTMENTS  
BILL OF MATERIAL**

NO.	Qty	Size	Length	Shape
1	2	12	100	
2	2	12	100	
3	2	12	100	
4	2	12	100	
5	2	12	100	
6	2	12	100	
7	2	12	100	
8	2	12	100	
9	2	12	100	
10	2	12	100	
11	2	12	100	
12	2	12	100	
13	2	12	100	
14	2	12	100	
15	2	12	100	
16	2	12	100	
17	2	12	100	
18	2	12	100	
19	2	12	100	
20	2	12	100	
21	2	12	100	
22	2	12	100	
23	2	12	100	
24	2	12	100	
25	2	12	100	
26	2	12	100	
27	2	12	100	
28	2	12	100	
29	2	12	100	
30	2	12	100	
31	2	12	100	
32	2	12	100	
33	2	12	100	
34	2	12	100	
35	2	12	100	
36	2	12	100	
37	2	12	100	
38	2	12	100	
39	2	12	100	
40	2	12	100	
41	2	12	100	
42	2	12	100	
43	2	12	100	
44	2	12	100	
45	2	12	100	
46	2	12	100	
47	2	12	100	
48	2	12	100	
49	2	12	100	
50	2	12	100	
51	2	12	100	
52	2	12	100	
53	2	12	100	
54	2	12	100	
55	2	12	100	
56	2	12	100	
57	2	12	100	
58	2	12	100	
59	2	12	100	
60	2	12	100	
61	2	12	100	
62	2	12	100	
63	2	12	100	
64	2	12	100	
65	2	12	100	
66	2	12	100	
67	2	12	100	
68	2	12	100	
69	2	12	100	
70	2	12	100	
71	2	12	100	
72	2	12	100	
73	2	12	100	
74	2	12	100	
75	2	12	100	
76	2	12	100	
77	2	12	100	
78	2	12	100	
79	2	12	100	
80	2	12	100	
81	2	12	100	
82	2	12	100	
83	2	12	100	
84	2	12	100	
85	2	12	100	
86	2	12	100	
87	2	12	100	
88	2	12	100	
89	2	12	100	
90	2	12	100	
91	2	12	100	
92	2	12	100	
93	2	12	100	
94	2	12	100	
95	2	12	100	
96	2	12	100	
97	2	12	100	
98	2	12	100	
99	2	12	100	
100	2	12	100	

DESIGNED: J.M. Patel  
CHECKED: S.E. Lindsey  
DRAWN: S.E. Lindsey  
CHECKED: J.M. Patel

**BAR SCHEDULE**

10"	5-8"	1
11"	3-2"	11
7"	3-2"	12

**BAR SCHEDULE**

10"	1-6"	1
11"	1-6"	1
12"	1-6"	1
13"	1-6"	1
14"	1-6"	1
15"	1-6"	1
16"	1-6"	1
17"	1-6"	1
18"	1-6"	1
19"	1-6"	1
20"	1-6"	1
21"	1-6"	1
22"	1-6"	1
23"	1-6"	1
24"	1-6"	1
25"	1-6"	1
26"	1-6"	1
27"	1-6"	1
28"	1-6"	1
29"	1-6"	1
30"	1-6"	1
31"	1-6"	1
32"	1-6"	1
33"	1-6"	1
34"	1-6"	1
35"	1-6"	1
36"	1-6"	1
37"	1-6"	1
38"	1-6"	1
39"	1-6"	1
40"	1-6"	1
41"	1-6"	1
42"	1-6"	1
43"	1-6"	1
44"	1-6"	1
45"	1-6"	1
46"	1-6"	1
47"	1-6"	1
48"	1-6"	1
49"	1-6"	1
50"	1-6"	1
51"	1-6"	1
52"	1-6"	1
53"	1-6"	1
54"	1-6"	1
55"	1-6"	1
56"	1-6"	1
57"	1-6"	1
58"	1-6"	1
59"	1-6"	1
60"	1-6"	1
61"	1-6"	1
62"	1-6"	1
63"	1-6"	1
64"	1-6"	1
65"	1-6"	1
66"	1-6"	1
67"	1-6"	1
68"	1-6"	1
69"	1-6"	1
70"	1-6"	1
71"	1-6"	1
72"	1-6"	1
73"	1-6"	1
74"	1-6"	1
75"	1-6"	1
76"	1-6"	1
77"	1-6"	1
78"	1-6"	1
79"	1-6"	1
80"	1-6"	1
81"	1-6"	1
82"	1-6"	1
83"	1-6"	1
84"	1-6"	1
85"	1-6"	1
86"	1-6"	1
87"	1-6"	1
88"	1-6"	1
89"	1-6"	1
90"	1-6"	1
91"	1-6"	1
92"	1-6"	1
93"	1-6"	1
94"	1-6"	1
95"	1-6"	1
96"	1-6"	1
97"	1-6"	1
98"	1-6"	1
99"	1-6"	1
100"	1-6"	1

**BAR SCHEDULE**

10"	1-6"	1
11"	1-6"	1
12"	1-6"	1
13"	1-6"	1
14"	1-6"	1
15"	1-6"	1
16"	1-6"	1
17"	1-6"	1
18"	1-6"	1
19"	1-6"	1
20"	1-6"	1
21"	1-6"	1
22"	1-6"	1
23"	1-6"	1
24"	1-6"	1
25"	1-6"	1
26"	1-6"	1
27"	1-6"	1
28"	1-6"	1
29"	1-6"	1
30"	1-6"	1
31"	1-6"	1
32"	1-6"	1
33"	1-6"	1
34"	1-6"	1
35"	1-6"	1
36"	1-6"	1
37"	1-6"	1
38"	1-6"	1
39"	1-6"	1
40"	1-6"	1
41"	1-6"	1
42"	1-6"	1
43"	1-6"	1
44"	1-6"	1
45"	1-6"	1
46"	1-6"	1
47"	1-6"	1
48"	1-6"	1
49"	1-6"	1
50"	1-6"	1
51"	1-6"	1
52"	1-6"	1
53"	1-6"	1
54"	1-6"	1
55"	1-6"	1
56"	1-6"	1
57"	1-6"	1
58"	1-6"	1
59"	1-6"	1
60"	1-6"	1
61"	1-6"	1
62"	1-6"	1
63"	1-6"	1
64"	1-6"	1
65"	1-6"	1
66"	1-6"	1
67"	1-6"	1
68"	1-6"	1
69"	1-6"	1
70"	1-6"	1
71"	1-6"	1
72"	1-6"	1
73"	1-6"	1
74"	1-6"	1
75"	1-6"	1
76"	1-6"	1
77"	1-6"	1
78"	1-6"	1
79"	1-6"	1
80"	1-6"	1
81"	1-6"	1
82"	1-6"	1
83"	1-6"	1
84"	1-6"	1
85"	1-6"	1
86"	1-6"	1
87"	1-6"	1
88"	1-6"	1
89"	1-6"	1
90"	1-6"	1
91"	1-6"	1
92"	1-6"	1
93"	1-6"	1
94"	1-6"	1
95"	1-6"	1
96"	1-6"	1
97"	1-6"	1
98"	1-6"	1
99"	1-6"	1
100"	1-6"	1

DETAILS  
SBL RT.116 SEC.116 BR-3  
IROQUOIS COUNTY  
STA 317+52

FOR INFORMATIONAL  
USE ONLY