

F.A.I. RTE.	SECTION	COUNTY	TOTAL SHEETS	SHEET NO.
80	*	**	219	62

STA. 350+00 TO STA. 380+00

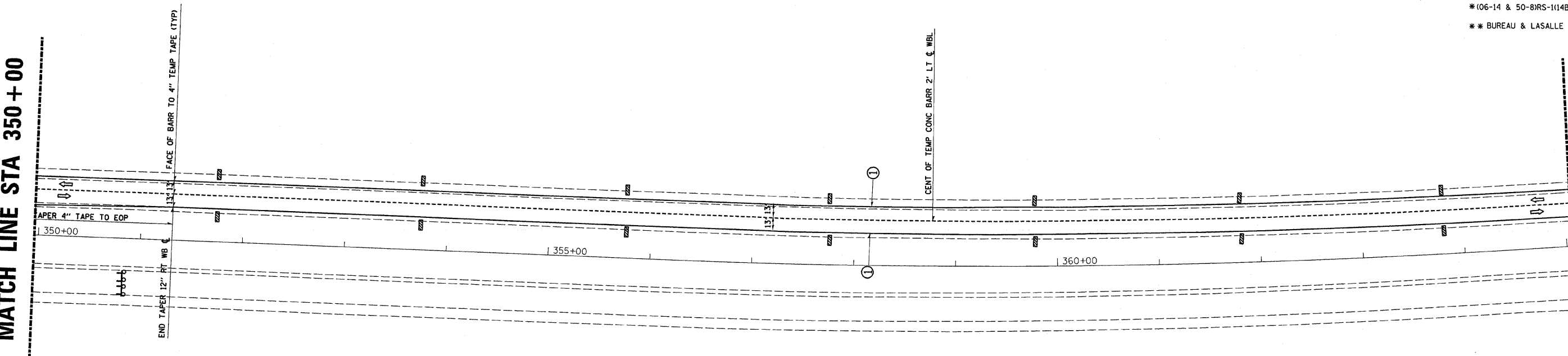
FED. ROAD DIST. NO. ILLINOIS FED. AID PROJECT

\*(06-14 & 50-8)RS-1(14)B,B-1,VB,VB-1,VB-2,VB-3BR

\*\* BUREAU & LASALLE

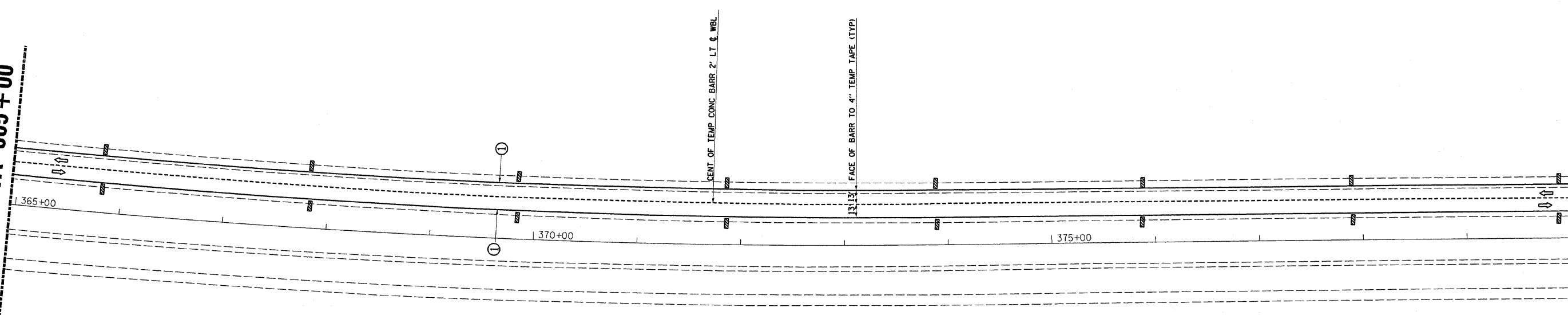
MATCH LINE STA 350+00

MATCH LINE STA 365+00



MATCH LINE STA 365+00

MATCH LINE STA 380+00



**SYMBOLS**

- Vertical Panel (back to back)
- Arrow board
- Sign
- Direction indicator barricade with steady burn monodirectional light
- Drum with steady burn monodirectional light
- Type II barricade, drum, or vertical barricade with steady burn monodirectional light
- Wet temporary pavement marking tape - TY III shall be placed throughout the taper and along-side the work area. The edge lines shall be white and the line near the barrier shall be yellow.

PLOT DATE : Aug 27, 2009 - 01:22:03 PM  
 FILE NAME : c:\pwworkspace\114881\114881.dwg  
 PLOT SCALE : 50.00000' / 1" / in.  
 USER NAME : wenzelko