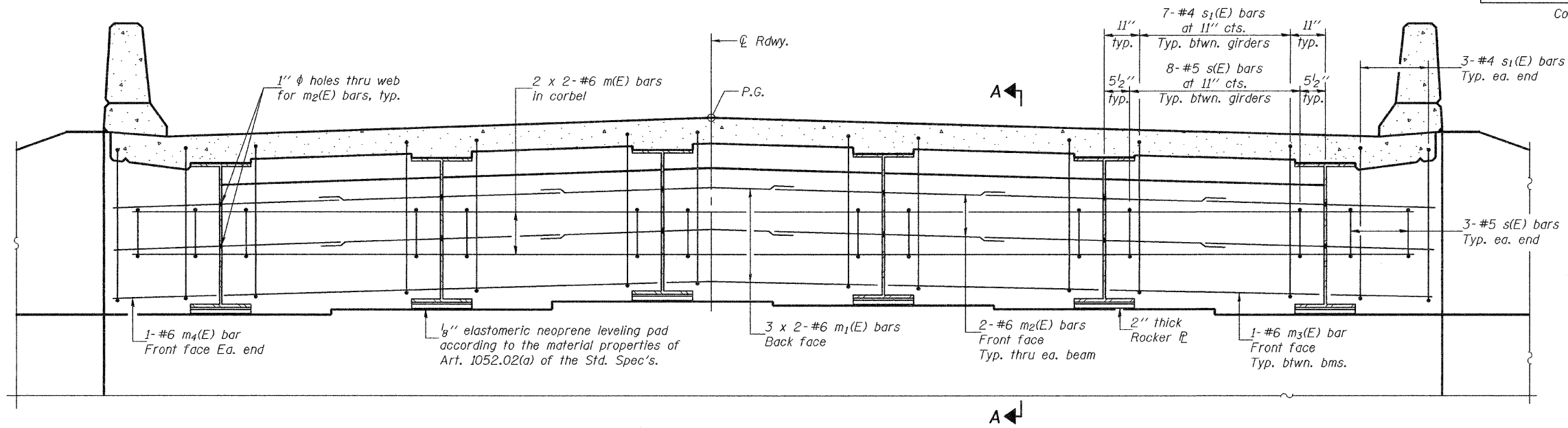


STATE OF ILLINOIS
DEPARTMENT OF TRANSPORTATION

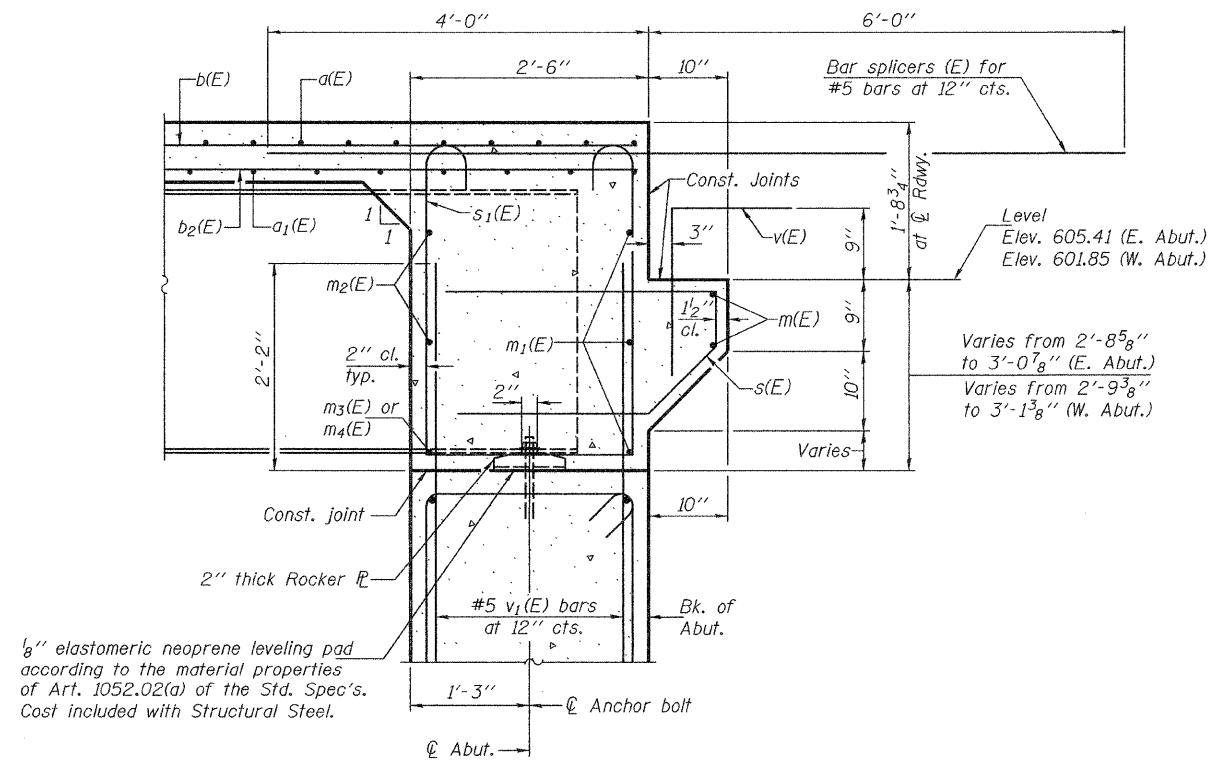
ROUTE NO.	SECTION	COUNTY	TOTAL SHEETS	SHEET NO.	SHEET NO. 16 32 SHEETS
F.A.I. 80	14BR & 14BR-1	BUREAU	219	88	
FED. ROAD DIST. NO. 7	ILLINOIS	FED. AID PROJECT-			

Contract No. 66731



DIAPHRAGM ELEVATION AT EAST ABUTMENT (E.B.)
(Looking East - Other abutments similar)

Notes: Reinforcement bars in diaphragm are billed with superstructure on sheet 15 of 32.
Concrete in diaphragm is included with Concrete Superstructure on sheet 15 of 32.
For details of bars s(E) & s1(E) see sheet 15 of 32.
Bars indicated 2 x 2-#6 etc. indicates 2 lines of bars with 2 lengths per line.
For bar splicer details see sheet 26 of 32.



MIN. BAR LAP
#6 bar = 2'-7"

SECTION A-A

DESIGNED	Nicholas R. Barnett
CHECKED	Ray Ahanchi
DRAWN	h.f. duong
CHECKED	NRB/GRA

EXAMINED	Thomas J. Romagallo ENGINEER OF BRIDGE DESIGN
PASSED	Ronald E. Carlson ENGINEER OF BRIDGES AND STRUCTURES

DIAPHRAGM DETAILS
F.A.I. RTE. 80 - SEC. 14BR & 14BR-1
BUREAU COUNTY
STATION 400+22.07
STRUCTURE NO. 006-0165 (E.B.)
STRUCTURE NO. 006-0166 (W.B.)