

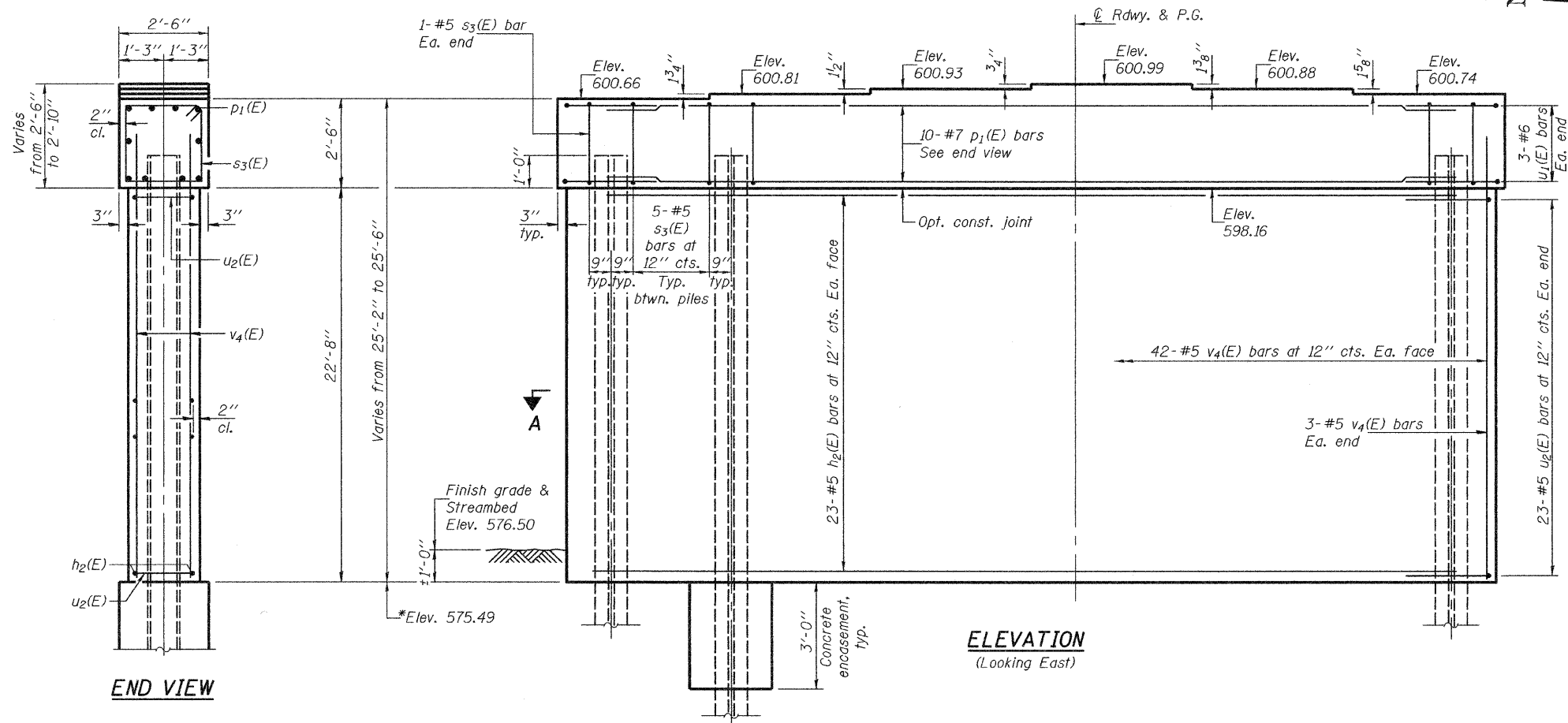
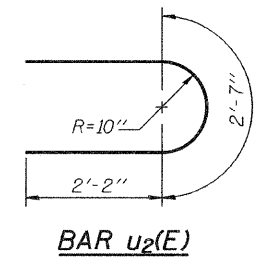
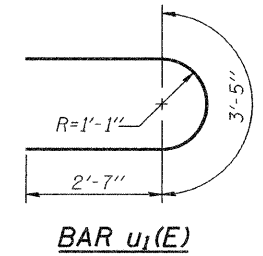
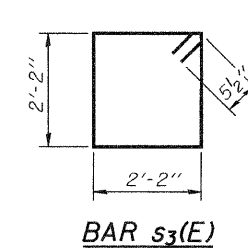
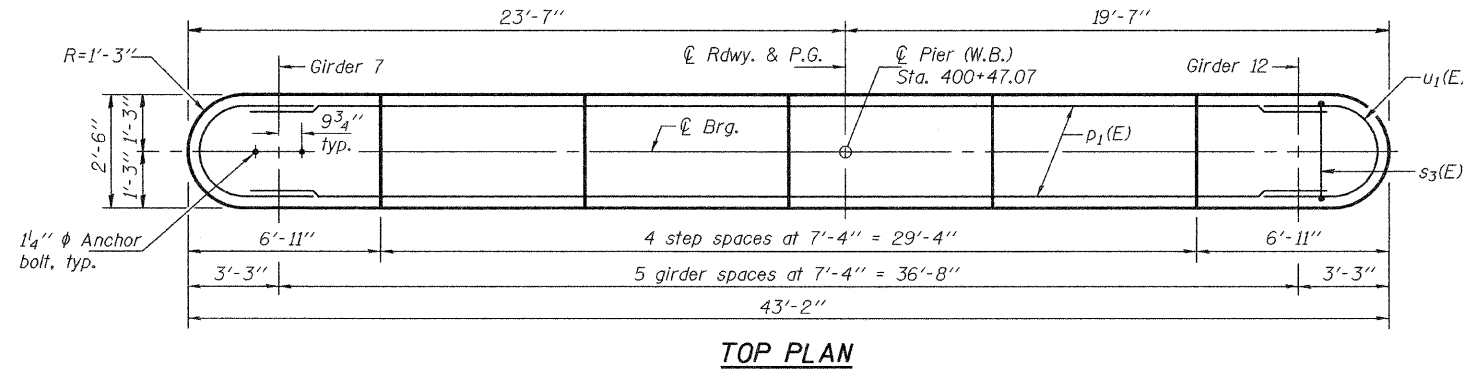
STATE OF ILLINOIS
DEPARTMENT OF TRANSPORTATION

ROUTE NO.	SECTION	COUNTY	TOTAL SHEETS	SHEET NO.	SHEET NO. 25 32 SHEETS
F.A.I. 80	14BR & 14BR-1	BUREAU	219	97	
FED. ROAD DIST. NO. 7		ILLINOIS	FED. AID PROJECT		

Contract No. 66731

Notes: Space reinforcement in cap to miss anchor bolts.
Pour steps monolithically with cap.
For details of piles, see sheet 27 of 32.

* Forms shall be placed below Elev. 575.49 after excavation for pier wall. Reinforcement shall be placed and concrete encasement shall be poured underwater into forms. If a portion of the pier wall is underwater, concrete shall be tremied underwater into forms according to Art. 503.08 of the Std. Spec's. Concrete shall be tremied to an elevation 1'-0" above the water level at the time of construction.

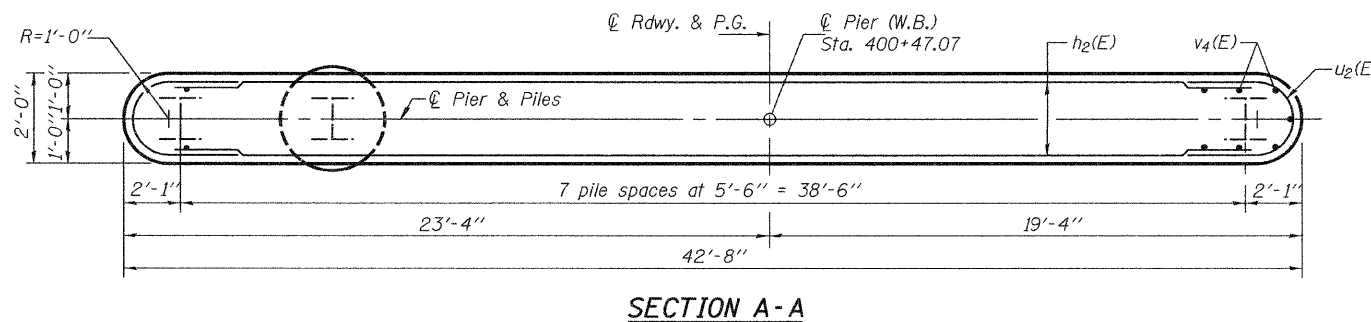


BILL OF MATERIAL

Bar	No.	Size	Length	Shape
h ₂ (E)	46	#5	40'-8"	—
p ₁ (E)	10	#7	40'-8"	—
s ₃ (E)	37	#5	9'-7"	□
u ₁ (E)	6	#6	8'-7"	U
u ₂ (E)	46	#5	6'-11"	U
v ₄ (E)	90	#5	23'-9"	—
Structure Excavation			Cu. Yd.	11
Concrete Structures			Cu. Yd.	81.5
Reinforcement Bars, Epoxy Coated			Pound	5790
Furnishing Steel Piles, HP14x102			Foot	512
Driving Piles			Foot	512
Concrete Encasement			Cu. Yd.	4.4
Underwater Structure Excavation Protection, Location 2			Each	1
Anchor Bolts, 1/4" φ			Each	12

PILE DATA

Type: Steel HP14x102
 Nominal Required Bearing: 718 Kips
 Factored Resistance Available: 325 Kips
 Est. Length: 64'
 No. Production Piles: 8
 No. Test Piles: 0



PIER (W.B.)
 F.A.I. RTE. 80 - SEC. 14BR & 14BR-1
 BUREAU COUNTY
 STATION 400+22.07
 STRUCTURE NO. 006-0165 (E.B.)
 STRUCTURE NO. 006-0166 (W.B.)

DESIGNED	Nicholas R. Barnett
CHECKED	Ray Ahanchi
DRAWN	h.t. duong
CHECKED	NRB/GRA

EXAMINED	Thomas J. Domagala
PASSED	Ralph E. Anderson

Sep. 30, 2008