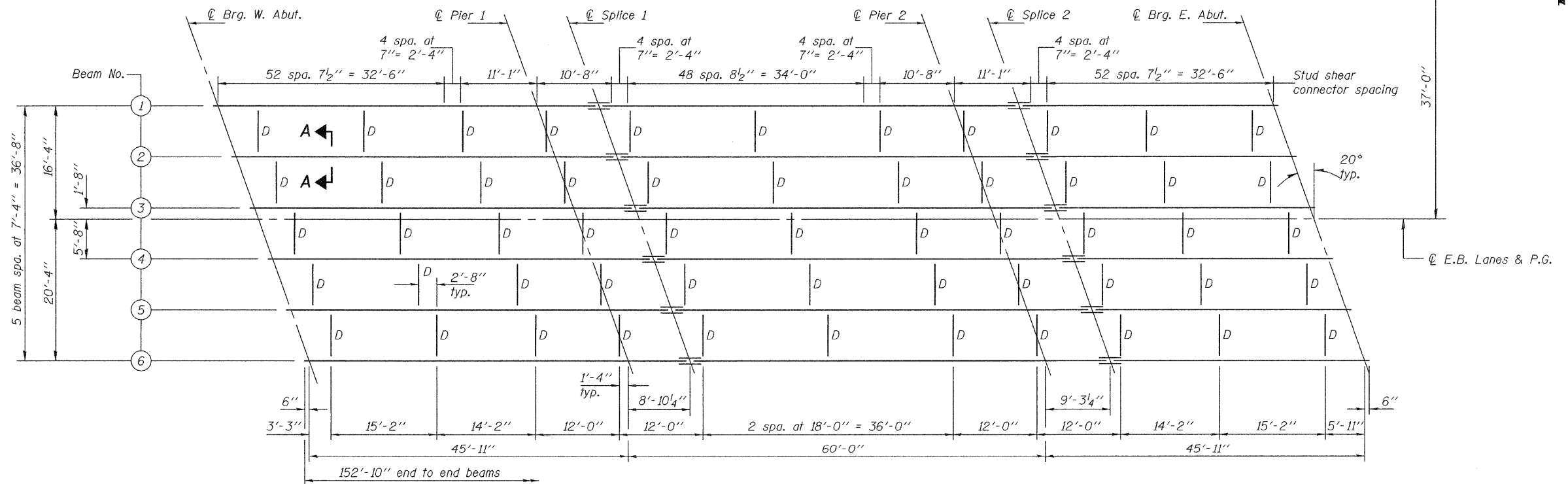
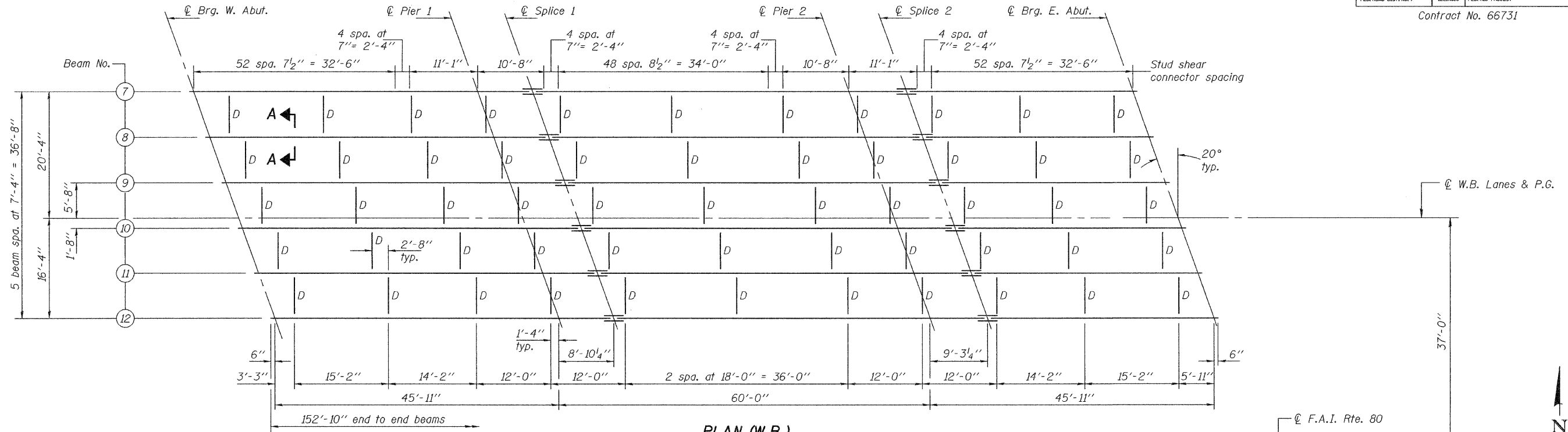


STATE OF ILLINOIS  
DEPARTMENT OF TRANSPORTATION

ROUTE NO.	SECTION	COUNTY	TOTAL SHEETS	SHEET NO.
F.A.I. 80	14VBR-2 & 14VBR-3	BUREAU	219	121
FED. ROAD DIST. NO. 7		ILLINOIS	FED. AID PROJECT	

Contract No. 66731



DESIGNED	Nicholas R. Barnett
CHECKED	Ray Ahanchi
DRAWN	h.t. duong
CHECKED	NRB/GRA

EXAMINED	Thomas J. Donagabadi ENGINEER OF BRIDGE DESIGN
PASSED	Ronald E. Anderson ENGINEER OF BRIDGES AND STRUCTURES

Sep. 30, 2008

Note: For Section A-A, see sheet 18 of 35.

**STRUCTURAL STEEL**  
**F.A.I. RTE. 80 - SEC. 14VBR-2 & 14VBR-3**  
**BUREAU COUNTY**  
**STATION 413+39.84**  
**STRUCTURE NO. 006-0167 (E.B.)**  
**STRUCTURE NO. 006-0168 (W.B.)**