

Notes: Space reinforcement in cap to miss anchor bolts.
 Four steps monolithically with cap.
 For details of piles, see sheet 29 of 35.

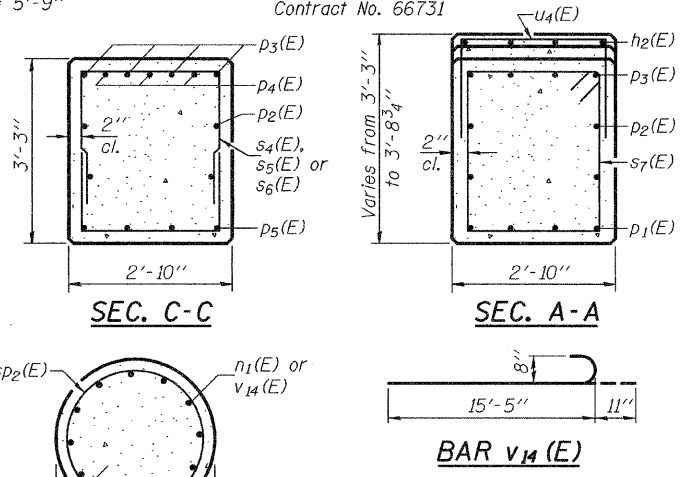
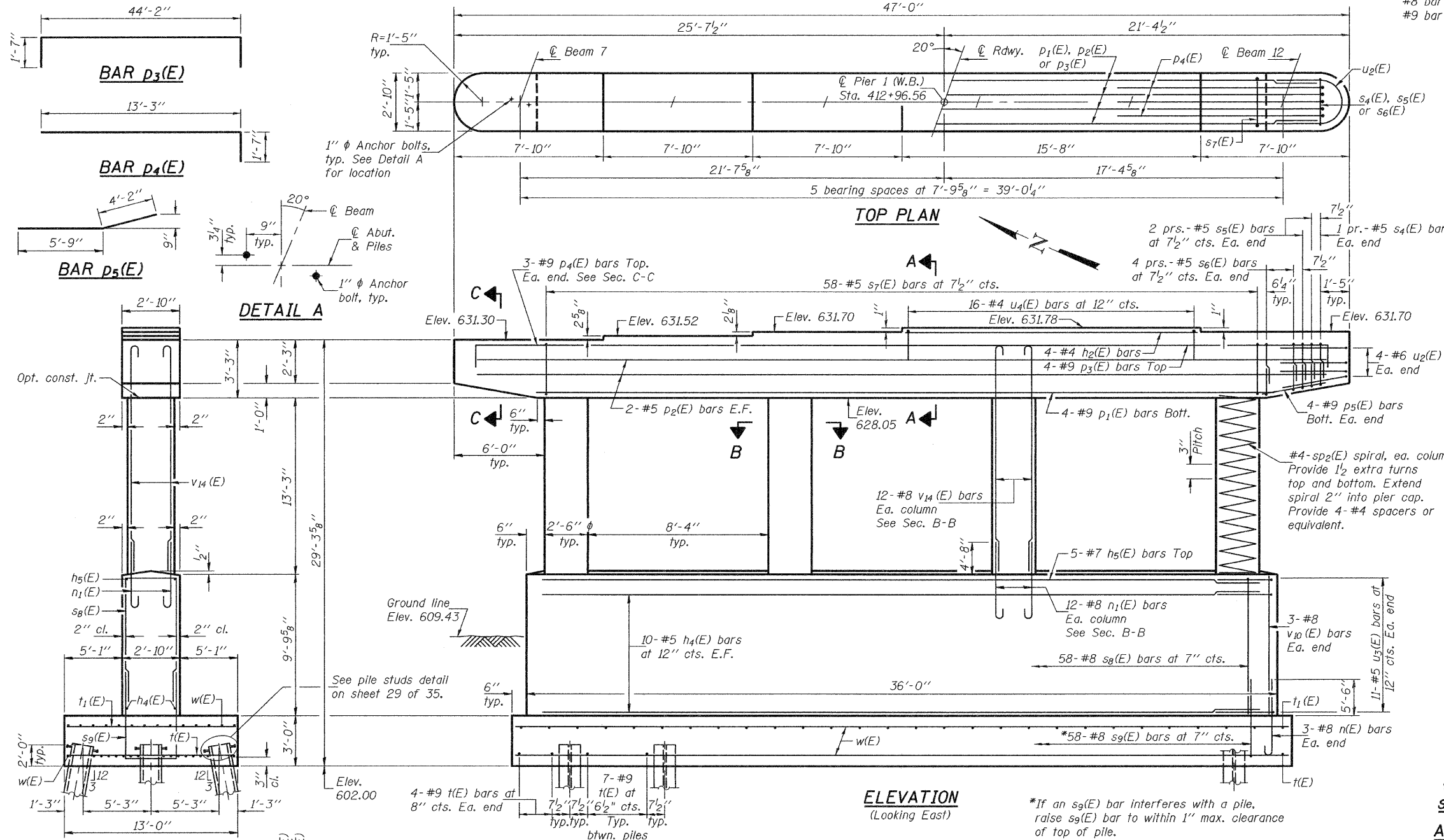
STATE OF ILLINOIS
 DEPARTMENT OF TRANSPORTATION

MIN. BAR LAPS

#5 bar = 2'-2"
 #8 bar = 4'-6"
 #9 bar = 5'-9"

ROUTE NO.	SECTION	COUNTY	TOTAL SHEETS	SHEET NO.	SHEET NO. 26 35 SHEETS
F.A.I. 80	14VBR-2 & 14VBR-3	BUREAU	219	130	
FED. ROAD DIST. NO. 7		ILLINOIS	FED. AID PROJECT		

Contract No. 66731

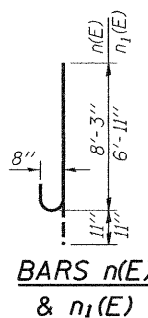


BILL OF MATERIAL

Bar	No.	Size	Length	Shape
h2(E)	4	#4	15'-4"	—
h4(E)	20	#5	33'-2"	—
h5(E)	5	#7	33'-2"	—
n(E)	6	#8	9'-2"	U
n1(E)	48	#8	7'-10"	U
p1(E)	4	#9	36'-0"	—
p2(E)	4	#5	44'-2"	—
p3(E)	4	#9	47'-4"	—
p4(E)	6	#9	14'-10"	—
p5(E)	8	#9	9'-11"	—
s4(E)	4	#5	6'-10"	□
s5(E)	8	#5	7'-0"	□
s6(E)	16	#5	7'-6"	□
s7(E)	58	#5	11'-9"	□
s8(E)	58	#8	20'-0"	□
s9(E)	58	#8	19'-0"	□
sp2(E)	4	#4	13'-7"	W
t(E)	57	#9	12'-8"	—
t1(E)	38	#7	12'-8"	—
u2(E)	8	#6	8'-10"	U
u3(E)	22	#5	8'-0"	U
u4(E)	16	#4	4'-6"	□
v10(E)	6	#8	8'-9"	—
v14(E)	48	#8	16'-4"	U
w(E)	30	#5	36'-8"	—
Structure Excavation			Cu. Yd.	192
Concrete Structures			Cu. Yd.	116.4
Reinforcement Bars, Epoxy Coated			Pound	19450
Furnishing Steel Piles, HP12x53			Foot	920
Driving Piles			Foot	920
Test Pile Steel, HP12x53			Each	1
Anchor Bolts, 1" φ			Each	12

BARS s4(E), s5(E), s6(E), s8(E) & s9(E)
 A & B DIMENSIONS

Bar	A	B
s4(E)	2'-6"	2'-2"
s5(E)	2'-6"	2'-3"
s6(E)	2'-6"	2'-6"
s8(E)	2'-6"	8'-9"
s9(E)	2'-6"	8'-3"



PIER 1 (W.B.)
 F.A.I. RTE. 80 - SEC. 14VBR-2 & 14VBR-3
 BUREAU COUNTY
 STATION 413+39.84
 STRUCTURE NO. 006-0167 (E.B.)
 STRUCTURE NO. 006-0168 (W.B.)

PILE DATA
 Type: Steel HP12x53
 Nominal Required Bearing: 366 Kips
 Factored Resistance Available: 183 Kips
 Est. Length: 40'
 No. Production Piles: 23
 No. Test Piles: 1

DESIGNED	Nicholas R. Barnett
CHECKED	Ray Ahanchi
DRAWN	h.f. duong
CHECKED	NRB/GRA

EXAMINED *Thomas J. Domagalicki*
 ENGINEER OF BRIDGE DESIGN
 PASSED *Ralph E. Anderson*
 ENGINEER OF BRIDGES AND STRUCTURES