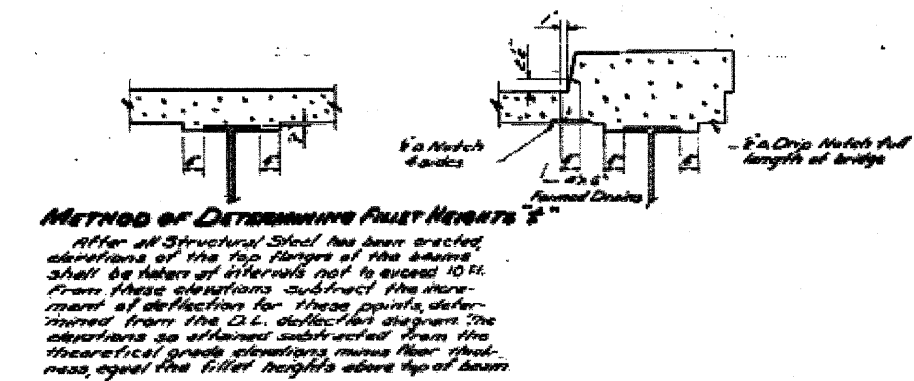
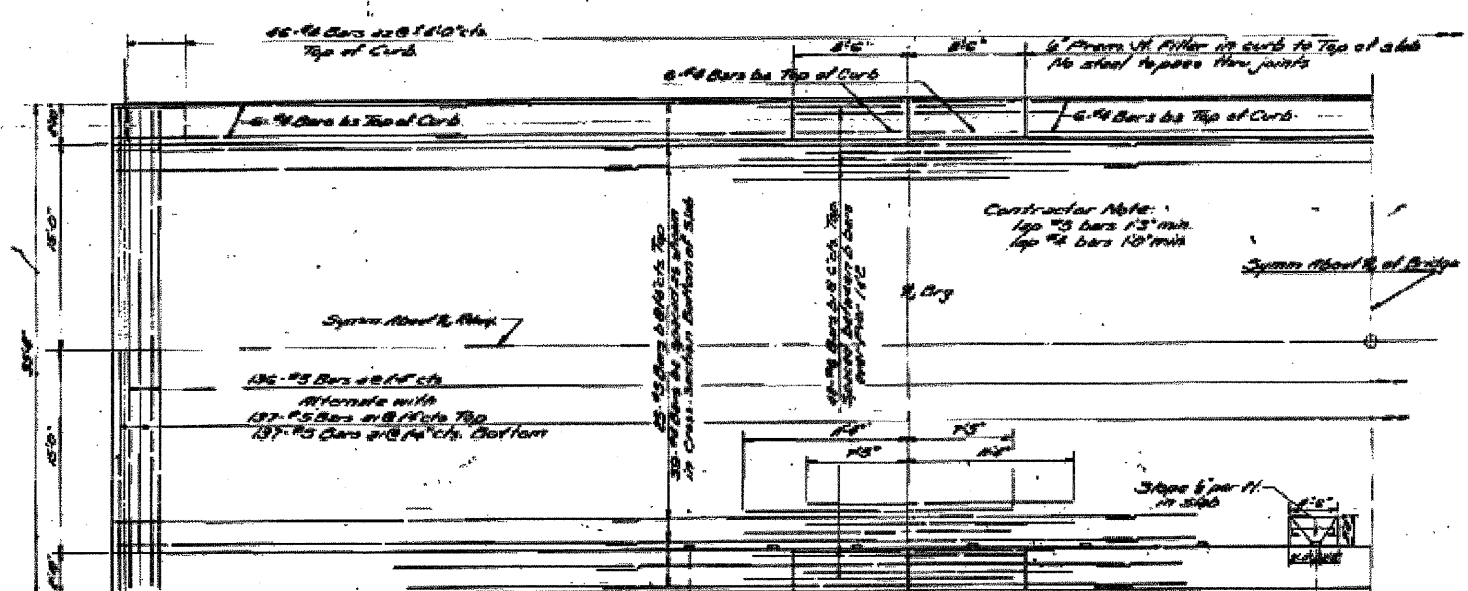
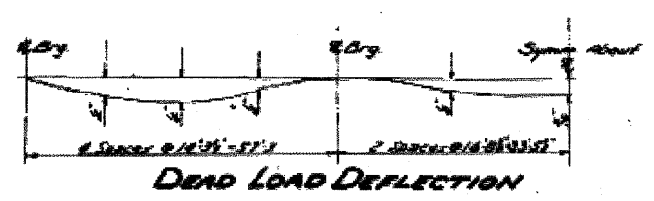
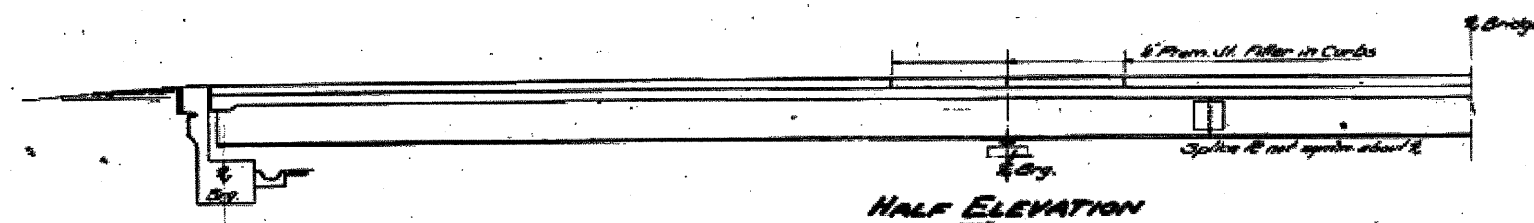


F.A.P. RTE.	SECTION	COUNTY	TOTAL SHEETS	SHEET NO.
80	*	BUR & LAS	219	141
STA. _____		TO STA. _____		
FED. ROAD DIST. NO. _____ ILLINOIS FED. AID PROJECT				

STATE OF ILLINOIS
DEPARTMENT OF PUBLIC WORKS & BUILDINGS
DIVISION OF HIGHWAYS

DESIGNED BY	CHECKED BY	DATE	PROJECT NO.	SHEET NO.
L. M. Olson	H. J. Chapin	April 26, 1955	154	5



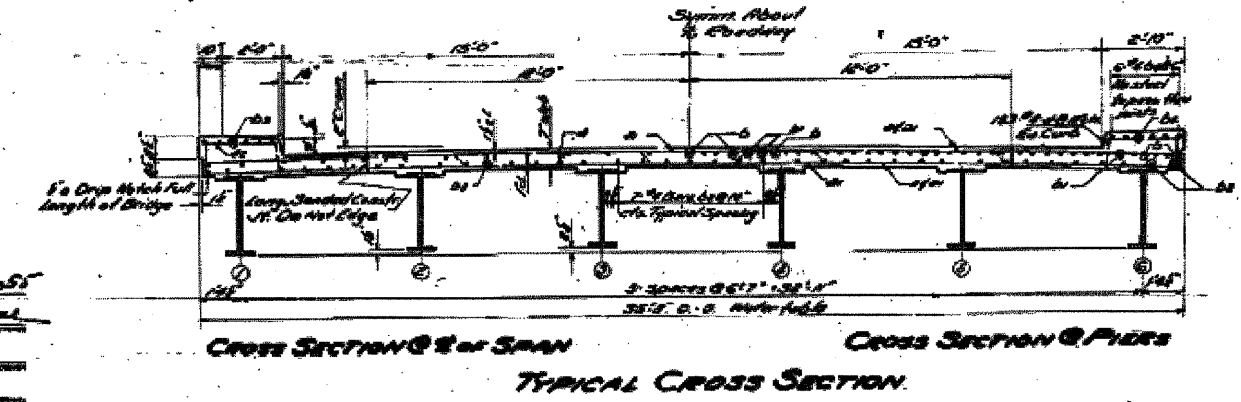
FILLET AND FLOOR DRAIN DETAILS



BILL OF MATERIAL

Bar No.	Size	Length	Shape
1	1 1/2"	15'	3/8"
2	1 1/2"	15'	3/8"
3	1 1/2"	15'	3/8"
4	1 1/2"	15'	3/8"
5	1 1/2"	15'	3/8"
6	1 1/2"	15'	3/8"
7	1 1/2"	15'	3/8"
8	1 1/2"	15'	3/8"
9	1 1/2"	15'	3/8"
10	1 1/2"	15'	3/8"
11	1 1/2"	15'	3/8"
12	1 1/2"	15'	3/8"
13	1 1/2"	15'	3/8"
14	1 1/2"	15'	3/8"
15	1 1/2"	15'	3/8"
16	1 1/2"	15'	3/8"
17	1 1/2"	15'	3/8"
18	1 1/2"	15'	3/8"
19	1 1/2"	15'	3/8"
20	1 1/2"	15'	3/8"
21	1 1/2"	15'	3/8"
22	1 1/2"	15'	3/8"
23	1 1/2"	15'	3/8"
24	1 1/2"	15'	3/8"
25	1 1/2"	15'	3/8"
26	1 1/2"	15'	3/8"
27	1 1/2"	15'	3/8"
28	1 1/2"	15'	3/8"
29	1 1/2"	15'	3/8"
30	1 1/2"	15'	3/8"
31	1 1/2"	15'	3/8"
32	1 1/2"	15'	3/8"
33	1 1/2"	15'	3/8"
34	1 1/2"	15'	3/8"
35	1 1/2"	15'	3/8"
36	1 1/2"	15'	3/8"
37	1 1/2"	15'	3/8"
38	1 1/2"	15'	3/8"
39	1 1/2"	15'	3/8"
40	1 1/2"	15'	3/8"
41	1 1/2"	15'	3/8"
42	1 1/2"	15'	3/8"
43	1 1/2"	15'	3/8"
44	1 1/2"	15'	3/8"
45	1 1/2"	15'	3/8"
46	1 1/2"	15'	3/8"
47	1 1/2"	15'	3/8"
48	1 1/2"	15'	3/8"
49	1 1/2"	15'	3/8"
50	1 1/2"	15'	3/8"
51	1 1/2"	15'	3/8"
52	1 1/2"	15'	3/8"
53	1 1/2"	15'	3/8"
54	1 1/2"	15'	3/8"
55	1 1/2"	15'	3/8"
56	1 1/2"	15'	3/8"
57	1 1/2"	15'	3/8"
58	1 1/2"	15'	3/8"
59	1 1/2"	15'	3/8"
60	1 1/2"	15'	3/8"
61	1 1/2"	15'	3/8"
62	1 1/2"	15'	3/8"
63	1 1/2"	15'	3/8"
64	1 1/2"	15'	3/8"
65	1 1/2"	15'	3/8"
66	1 1/2"	15'	3/8"
67	1 1/2"	15'	3/8"
68	1 1/2"	15'	3/8"
69	1 1/2"	15'	3/8"
70	1 1/2"	15'	3/8"
71	1 1/2"	15'	3/8"
72	1 1/2"	15'	3/8"
73	1 1/2"	15'	3/8"
74	1 1/2"	15'	3/8"
75	1 1/2"	15'	3/8"
76	1 1/2"	15'	3/8"
77	1 1/2"	15'	3/8"
78	1 1/2"	15'	3/8"
79	1 1/2"	15'	3/8"
80	1 1/2"	15'	3/8"
81	1 1/2"	15'	3/8"
82	1 1/2"	15'	3/8"
83	1 1/2"	15'	3/8"
84	1 1/2"	15'	3/8"
85	1 1/2"	15'	3/8"
86	1 1/2"	15'	3/8"
87	1 1/2"	15'	3/8"
88	1 1/2"	15'	3/8"
89	1 1/2"	15'	3/8"
90	1 1/2"	15'	3/8"
91	1 1/2"	15'	3/8"
92	1 1/2"	15'	3/8"
93	1 1/2"	15'	3/8"
94	1 1/2"	15'	3/8"
95	1 1/2"	15'	3/8"
96	1 1/2"	15'	3/8"
97	1 1/2"	15'	3/8"
98	1 1/2"	15'	3/8"
99	1 1/2"	15'	3/8"
100	1 1/2"	15'	3/8"

Class of Concrete: C-150
Reinforcement Bars: A-36
Structural Steel: A-36



SUPERSTRUCTURE
SPRING CREEK BRIDGE
PROJECT F-574(5)
F.A. RT. 154 SEC. 14-B
BUREAU COUNTY
STATION 400+20(1)

DESIGNED	L. M. Olson	DATE	April 26, 1955
CHECKED	H. J. Chapin	BY	V. M. Roscoe
DRAWN	E. Fish	APPROVED	F. J. Shively
CHECKED	H. J. Chapin	APPROVED	C. B. ...

FOR INFORMATION ONLY

REVISIONS	
NAME	DATE

ILLINOIS DEPARTMENT OF TRANSPORTATION
EXISTING BRIDGE PLANS
SN 006-0032 (EBL)
SCALE: VERT. _____
HORIZ. _____
DATE _____
DRAWN BY _____
CHECKED BY _____

PLOT DATE = Aug 27, 2008 - 01:44:58 PM
FILE NAME = c:\pwworkspace\pwworkspace\100000000\100000000.dwg
PLOT SCALE = 1/8" = 1'-0"
USER NAME = wencelko