

F.A.P. RTE.	SECTION	COUNTY	TOTAL SHEETS	SHEET NO.
80	*	BUR & LAS	219	144
STA. _____		TO STA. _____		
FED. ROAD DIST. NO. ILLINOIS FED. AID PROJECT				

\* (06-14 & 50-8)RS-1 (14B,B-1,VB,VB-1,VB-2,VB-3)BR

STATE OF ILLINOIS  
DEPARTMENT OF PUBLIC WORKS & BUILDINGS  
DIVISION OF HIGHWAYS

DATE	BY	REVISION	SHEET NO.
1-1-54	MB	BRIDGE # 10	7
7 SHEETS			

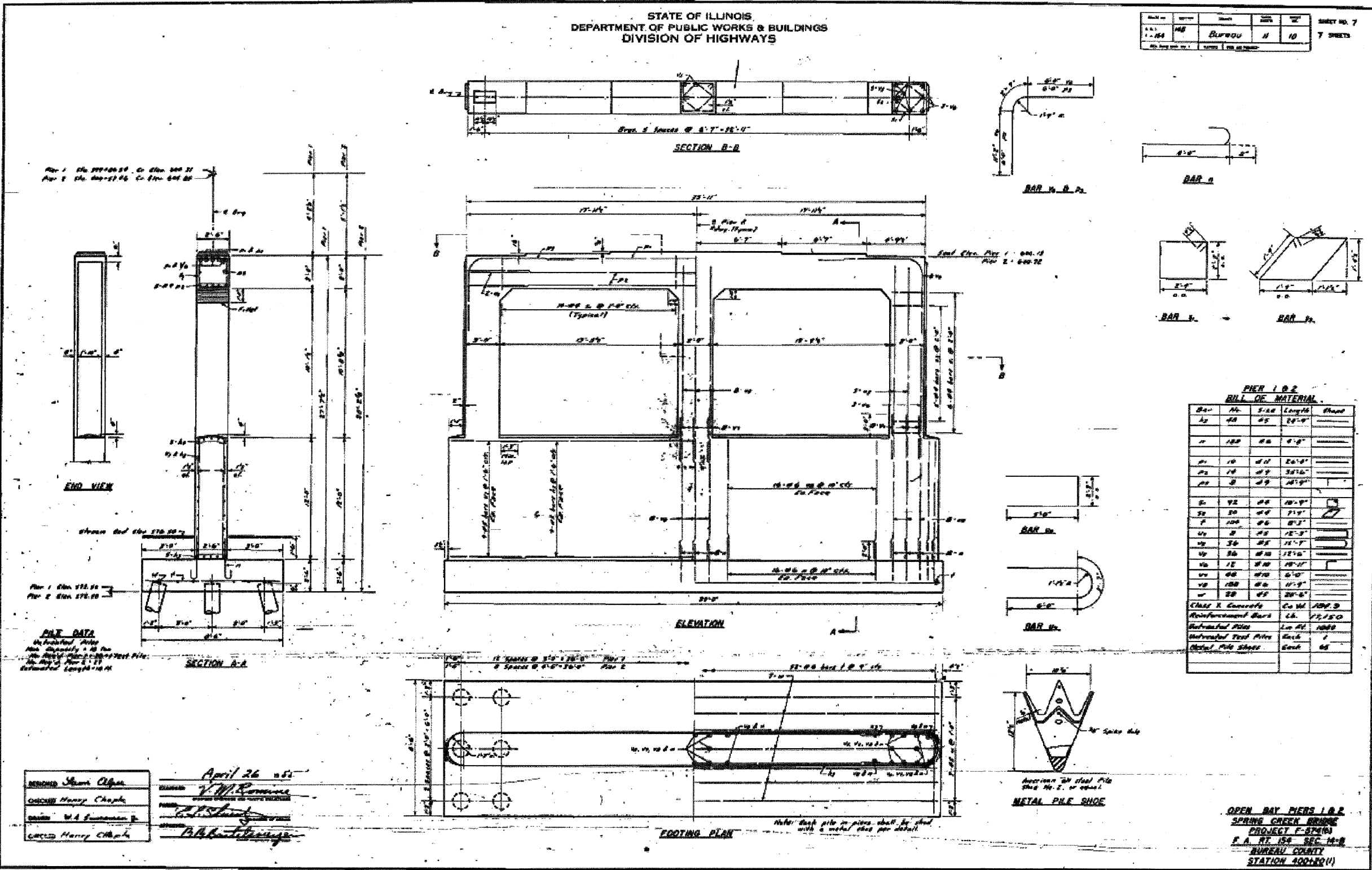


Fig. 1 Elev. 170.00  
Fig. 2 Elev. 170.00

Fig. 1 Elev. 170.00  
Fig. 2 Elev. 170.00

**PILE DATA**  
No. of Piles 2  
Pile Diameter 18" Dia.  
Pile Length 30'-0" (Estimated)

APRIL 26 1954

DESIGNED BY: *W.A. Bussanese*  
CHECKED BY: *Henry Chapin*

FOR INFORMATION ONLY

REVISIONS	
NAME	DATE

ILLINOIS DEPARTMENT OF TRANSPORTATION  
**EXISTING BRIDGE PLANS**  
SN 006-0032 (EBL)

SCALE: VERT. \_\_\_\_\_  
HORIZ. \_\_\_\_\_

DATE \_\_\_\_\_ DRAWN BY \_\_\_\_\_  
CHECKED BY \_\_\_\_\_