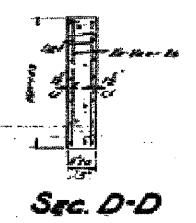
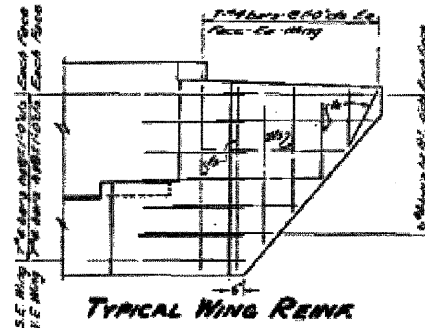
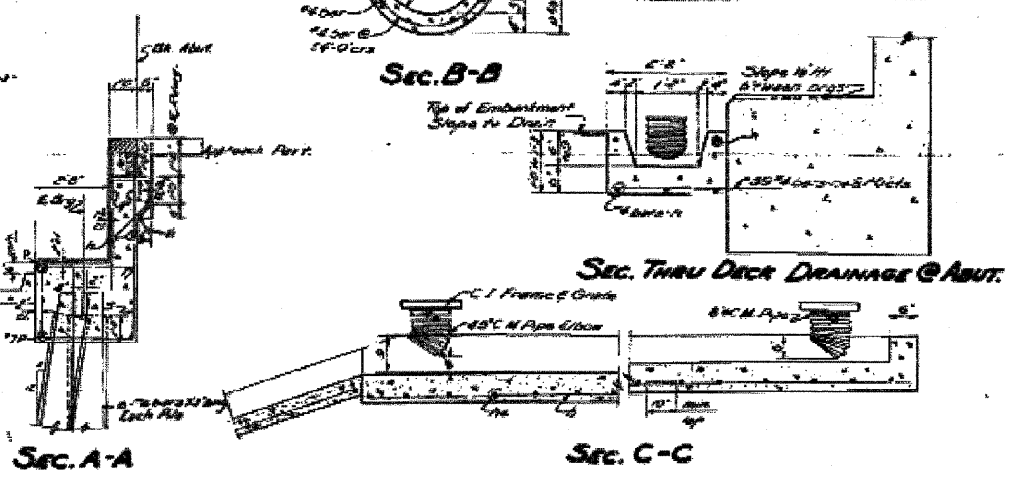
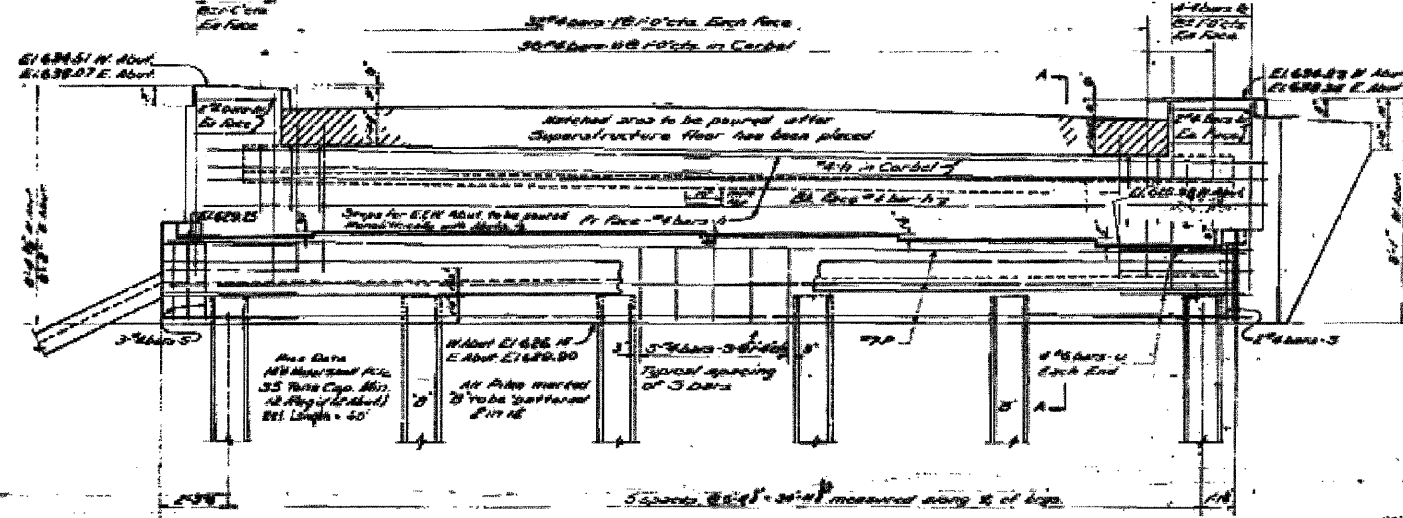
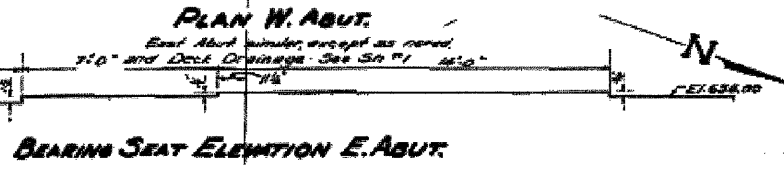
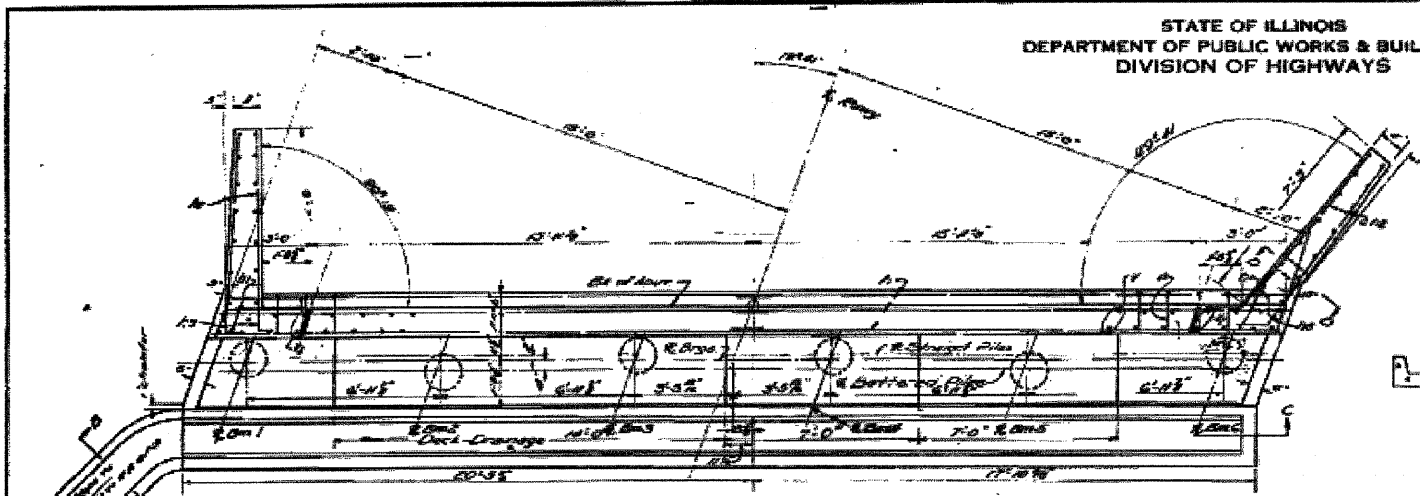


F.A.P. RTE.	SECTION	COUNTY	TOTAL SHEETS	SHEET NO.
80		BUR & LAS	219	169
STA. _____		TO STA. _____		
FED. ROAD DIST. NO. _____		ILLINOIS FED. AID PROJECT		

* (06-14 & 50-8)RS-1 (14B,B-1,VB,VB-1,VB-2,VB-3)BR

STATE OF ILLINOIS
DEPARTMENT OF PUBLIC WORKS & BUILDINGS
DIVISION OF HIGHWAYS

SECTION	NO.	DATE	BY	CHKD.	REVISIONS
14B	14B-1	Bureau	11	7	7 SHEETS



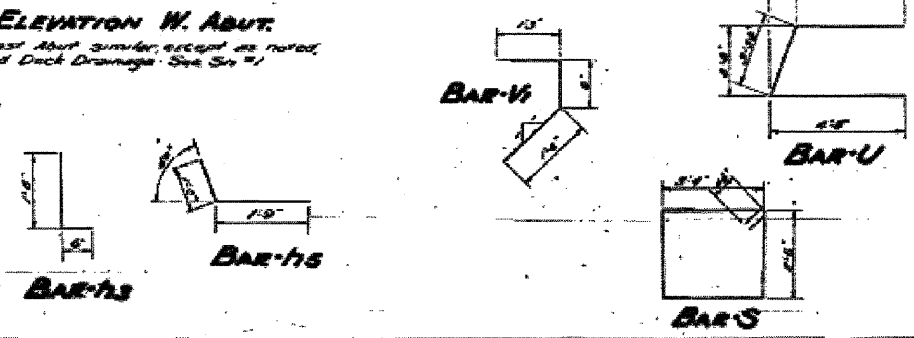
BILL OF MATERIAL - TWO ABUTS.

Bar	No.	Size	Length	Shape
1	126	#4	0'-0"	
2	72	#4	3'-6"	
3	32	#4	7'-8"	
4	16	#4	7'-0"	
5	24	#4	1'-9"	
6	16	#4	3'-0"	
7	48	#4	15'-6"	
8	16	#4	6'-0"	
9	16	#4	6'-0"	
10	24	#4	2'-0"	
11	72	#4	0'-0"	
12	24	#4	2'-9"	
13	60	#4	12'-6"	
14	24	#4	30'-0"	
15	16	#6	11'-8"	

Class I Concrete C₁ 4000
Reinforcement Bars L₁ 3000
#4 Reinforcement Bars L₂ 1000
Steel Pipes Each 2

Abutment quantities include 11 cu yds Class I Concrete for deck drainage

DESIGNED: Ronald Russell
CHECKED: J. M. ...
DATE: April 26, 1957



E. & W. ABUTMENTS
C.B. & Q.R.R. OVERHEAD
F.A. RT. 154 SEC. 14-1B/1
BUREAU COUNTY
STA. 413+31.25 (1)

FOR INFORMATION ONLY

REVISIONS	
NAME	DATE

ILLINOIS DEPARTMENT OF TRANSPORTATION
EXISTING BRIDGE
PLANS
SN 006-0036 (EBL)
SCALE: VERT. _____
DATE: _____ HORIZ. _____
DRAWN BY: _____
CHECKED BY: _____