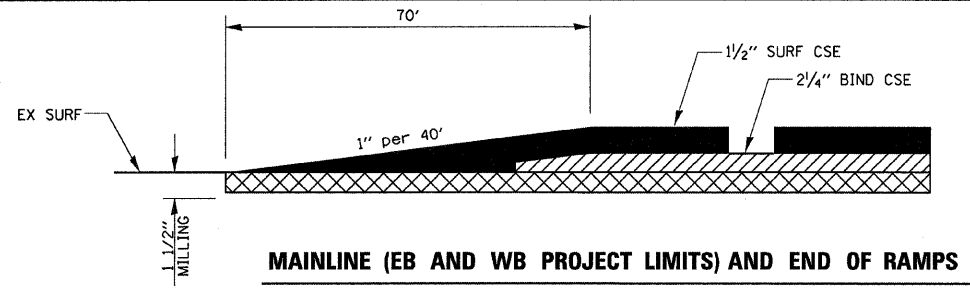
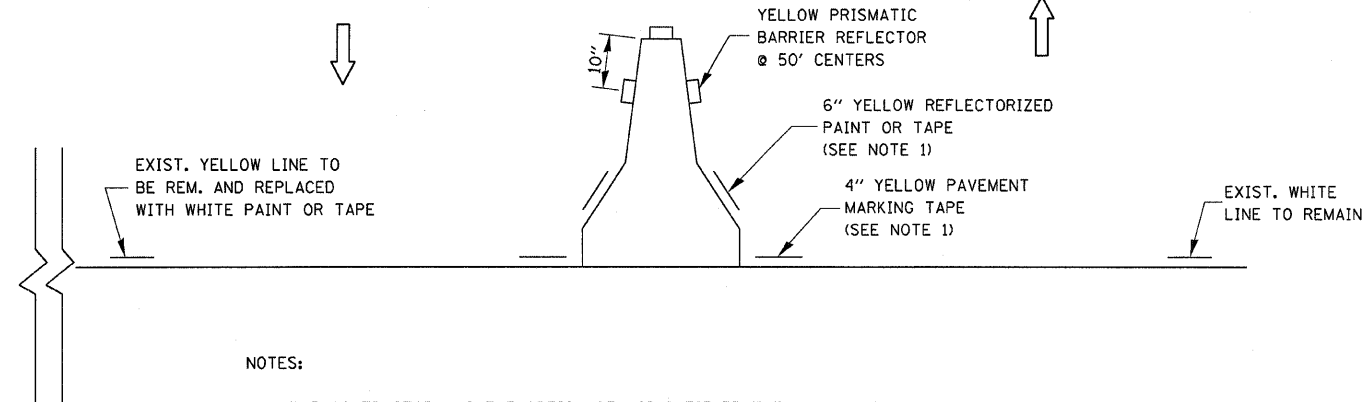


F.A.P. RTE.	SECTION	COUNTY	TOTAL SHEETS	SHEET NO.
80	*	BUR & LAS	219	177
STA. _____ TO STA. _____		ILLINOIS FED. AID PROJECT		
* (06-14 & 50-8)RS-1 (14B,B-1,VB,VB-1,VB-2,VB-3)BR				

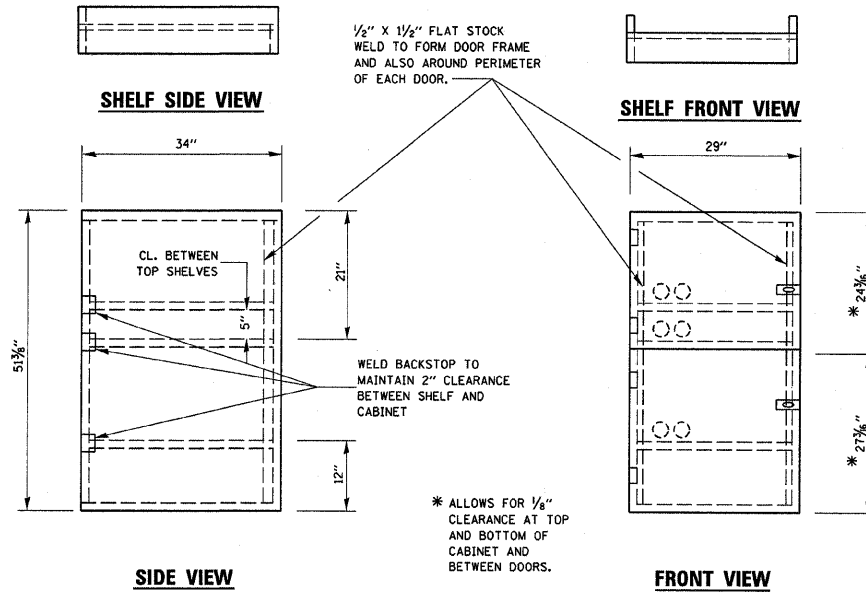


RDWY.



NOTES:

1. THE CONTRACTOR HAS THE OPTION OF USING EITHER THE LINE ON THE TEMPORARY CONCRETE BARRIER OR ON THE PAVEMENT.
2. THE COST OF THE REFLECTORS AND THE BARRIER/PAVEMENT MARKING LINE IS INCLUDED IN THE COST OF THE TEMPORARY CONCRETE BARRIER.

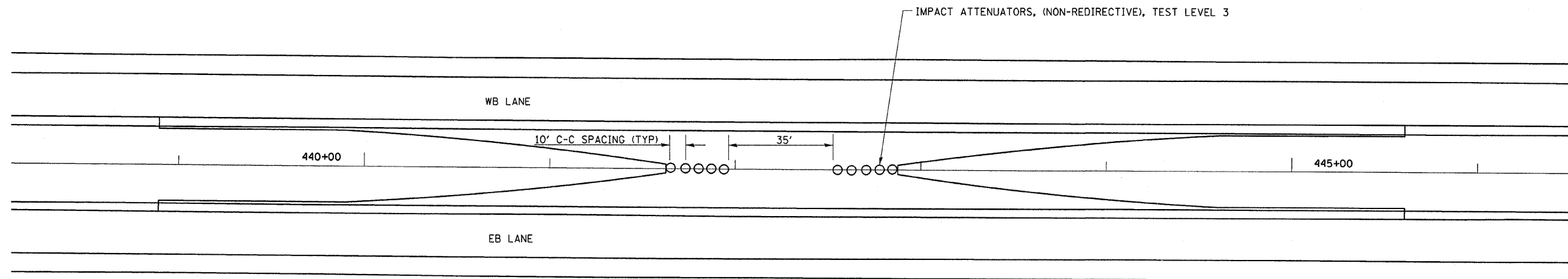


* ALLOWS FOR 1/8" CLEARANCE AT TOP AND BOTTOM OF CABINET AND BETWEEN DOORS.

NOTES:

1. USE 16 GAUGE STEEL FOR CABINET.
2. THE TOP SHELF SHALL SLIDE IN OR OUT WITH THE TOP DOOR OPEN.
3. ALL HINGES AND HASPS WILL BE WELDED TO THE CABINET.
4. ALL EDGES SHALL BE GROUND SMOOTH.
5. TWO (2" DIA.) ACCESS HOLES WILL BE REQUIRED FOR EACH SHELF.
6. CABINET SHALL BE PAINTED WITH TWO COATS OF FLAT PAINT.
7. 2 EACH MATCHING KEY PADLOCKS, WITH 3 KEYS PROVIDED, MASTER MODEL 3 T OR EQUIVALENT.
8. 4 EACH PLAIN STEEL, NON-REMOVABLE PIN, NO HOLE 4" x 4" SQUARE CORNER HINGES TO BE WELDED ON.
9. 2 EACH EXTRA HEAVY, PLAIN STEEL, FIXED STAPLE, NO HOLE, 7/4" HASPS TO BE WELDED ON.

LOCKABLE COMPUTER CABINET



MEDIAN CROSSOVER IMPACT ATTENUATORS

NOTE: IMPACT ATTENUATORS SHALL BE PLACED WHEN CROSSOVER CONSTRUCTION IS COMPLETE, AND SHALL BECOME THE PROPERTY OF THE STATE.

WESTERN MEDIAN CROSSOVER IS THE SAME AS THE ABOVE DETAIL. STA 342+00 TO 350+00

IMPACT ATTENUATORS TO BE PLACED AFTER STAGE II IS COMPLETE. THIS WORK SHALL BE PAID FOR AS THE CONTRACT UNIT PRICES EACH AS IMPACT ATTENUATORS, (NON-REDIRECTIVE), TEST LEVEL 3

PLOT DATE = Aug 26, 2008 - 11:30:56 AM
 FILE NAME = c:\pwworkspace\pwworkspace\user\106620800.dwg
 PLOT SCALE = 1/8" = 1'-0"
 USER NAME = wensheko