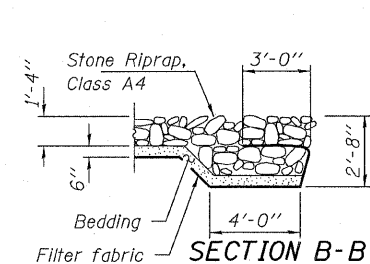


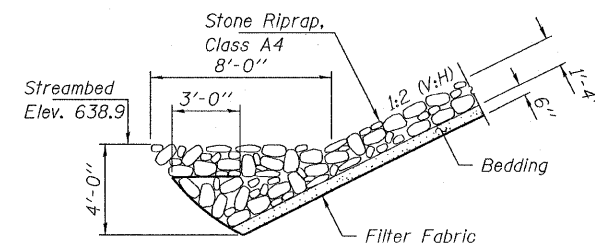
PLAN

GENERAL NOTES

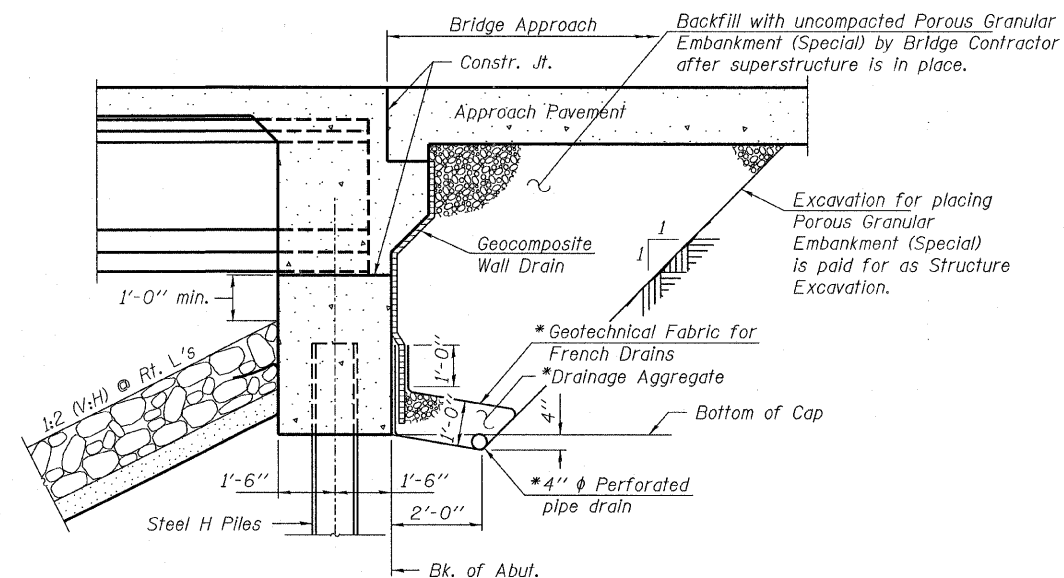
Reinforcement bars shall conform to the requirements of ASTM A 706 Gr 60 (IL Modified). See Special Provisions.
 Reinforcement bars designated (E) shall be epoxy coated.
 Layout of the slope protection system may be varied to suit ground conditions in the field as directed by the Engineer.
 The contractor shall drive test piles to 110% of the nominal required bearing specified in production locations at substructures specified or approved by the Engineer before ordering the remainder of piles.



SECTION B-B



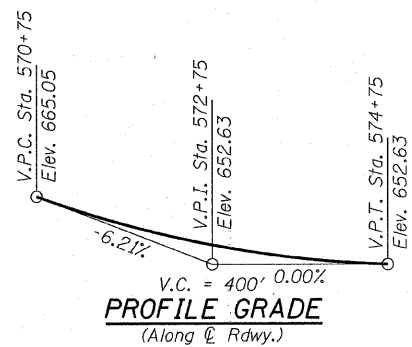
SECTION A-A



SECTION THRU INTEGRAL ABUTMENT

* Included in the cost of Pipe Underdrains for Structures.

Note:
 All drainage system components shall extend to 2'-0" from the end of each wingwall except an outlet pipe shall extend until intersecting with the side slopes. The pipes shall drain into concrete headwalls. (See Article 601.05 of the Standard Specifications and Highway Standard 601101).



PROFILE GRADE
 (Along ϕ Rdwy.)

STATION 571+32.50
 BUILT 200 BY
 STATE OF ILLINOIS
 F.A.P. RT. 665 SEC. (144-B)BR
 LOADING HS20
 STR. NO. 029-0066

NAME PLATE
 See Std. 515001

DESIGNED - P.S.L.
CHECKED - M.D.C.
DRAWN - D.A.B.
CHECKED - M.D.C.

**RIPRAP DETAILS
 STRUCTURE NO. 029-0066**

HAMPTON, LENZINI & RENWICK, INC. CIVIL & STRUCTURAL ENGINEERS LAND SURVEYORS 3085 STEVENSON DRIVE, SUITE 201 SPRINGFIELD, ILLINOIS 62703 (217) 548-3400 PROJECT NUMBER: 12-37-0003-1 DATE: 07/31/08	SHEET NO. 2	F.A.P.	SECTION	COUNTY	TOTAL SHEETS	SHEET NO.
	20 SHEETS	665	(144-B)BR	FULTON	67	18
		IL 116 OVER LITTLERS CREEK			CONTRACT NO. 68091	
		FED. ROAD DIST. NO. 4	ILLINOIS	FED. AID PROJECT		