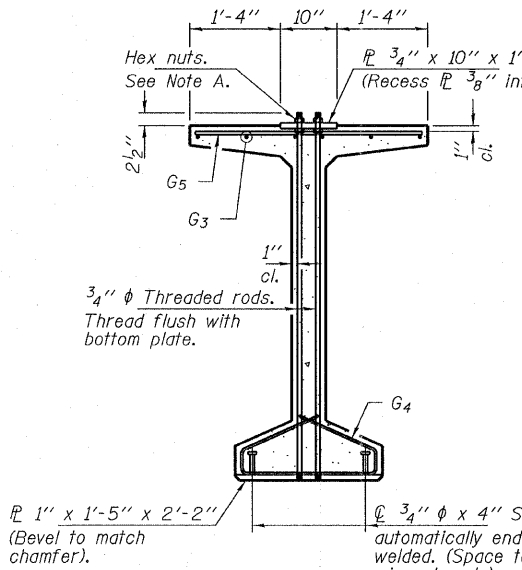


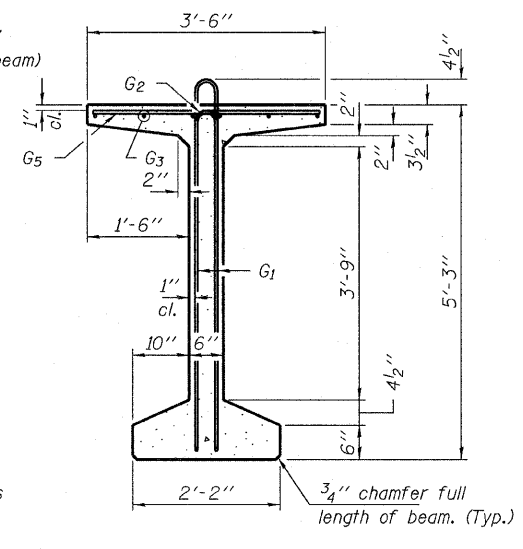
ELEVATION OF BEAM
(Showing reinforcement & dimensions)

* 4 Spa. @ 3/4" = 1'-1"
 ** 5-3/4" ϕ threaded dowel rods @ 3/4" cts., Each Face.

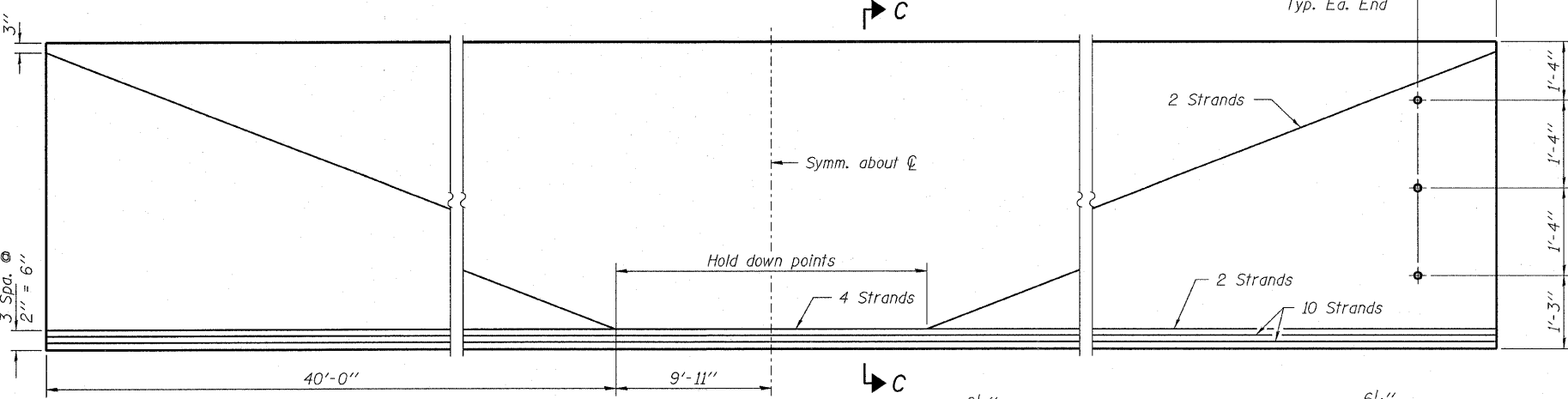
Note A:
 Hex nuts (top and bottom) with lock washers (top). Only tighten sufficiently to compress lock washers.



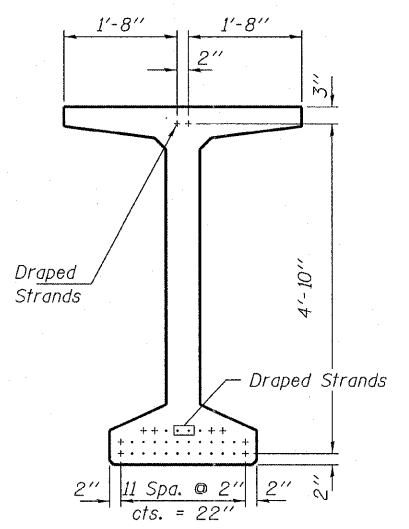
SECTION A-A



SECTION B-B



ELEVATION OF BEAM
(Showing prestressing steel)



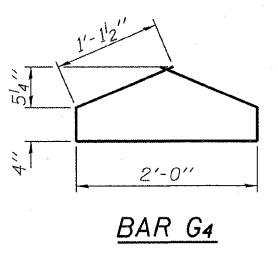
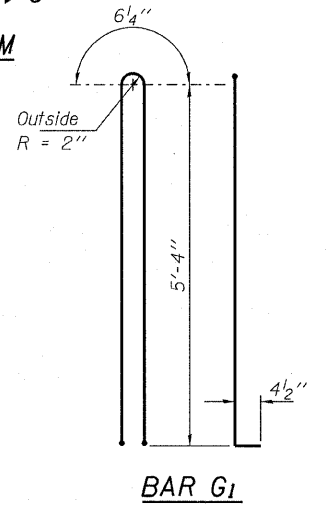
SECTION C-C

***BAR LIST**

Bar	No.	Size	Length	Shape
G1	114	#4	11'-11"	∩ L
G2	16	#6	10'-2"	∩
G3	24	#6	26'-9"	—
G4	56	#3	4'-11"	∩
G5	132	#5	3'-4"	—

*For one beam only.

Notes:
 See sheet 14 of 20 for additional details and Bill of Material.
 Required release strength, f'_{ci} , shall be 5,000 psi.



DESIGNED - P.S.L.
CHECKED - M.D.C.
DRAWN - D.A.B.
CHECKED - M.D.C.

HAMPTON, LENZINI & RENWICK, INC.
 CIVIL & STRUCTURAL ENGINEERS
 LAND SURVEYORS

HLR 3085 STEVENSON DRIVE, SUITE 201
 SPRINGFIELD, ILLINOIS 62703
 (217) 546-3400

PROJECT NUMBER: 12-37-0003-1 DATE: 07/31/08

SHEET NO. 15 20 SHEETS	F.A.P.	SECTION	COUNTY	TOTAL SHEETS	SHEET NO.
	665	(144-B)BR	FULTON	67	31
	IL 116 OVER LITTLERS CREEK		CONTRACT NO. 68091		
FED. ROAD DIST. NO. 4 ILLINOIS FED. AID PROJECT					

BEAM DETAILS
STRUCTURE NO. 029-0066