

F.A.P. RTE.	SECTION	COUNTY	TOTAL SHEETS	SHEET NO.
22	135W-21 RS-5	FULTON	282	36
STA.		TO STA.		
FED. ROAD DIST. NO.		ILLINOIS	FED. AID PROJECT	

EXIST. CURVE #2  
 PI STA. = 191+69.31  
 $\Delta = 14^\circ 33' 40''$  (LT)  
 $D = 1^\circ 54' 35''$   
 $R = 3,000.10'$   
 $T = 383.29'$   
 $L = 762.44'$   
 $E = 24.38'$   
 P.C. STA. = 187+86.02  
 P.T. STA. = 195+48.46  
 S.E. TRANS STA. = 186+96  
 S.E. FULL STA. = 188+04  
 S.E. FULL STA. = 195+03  
 S.E. TRANS STA. = 196+38  
 SUPERELEVATION = 1.5%

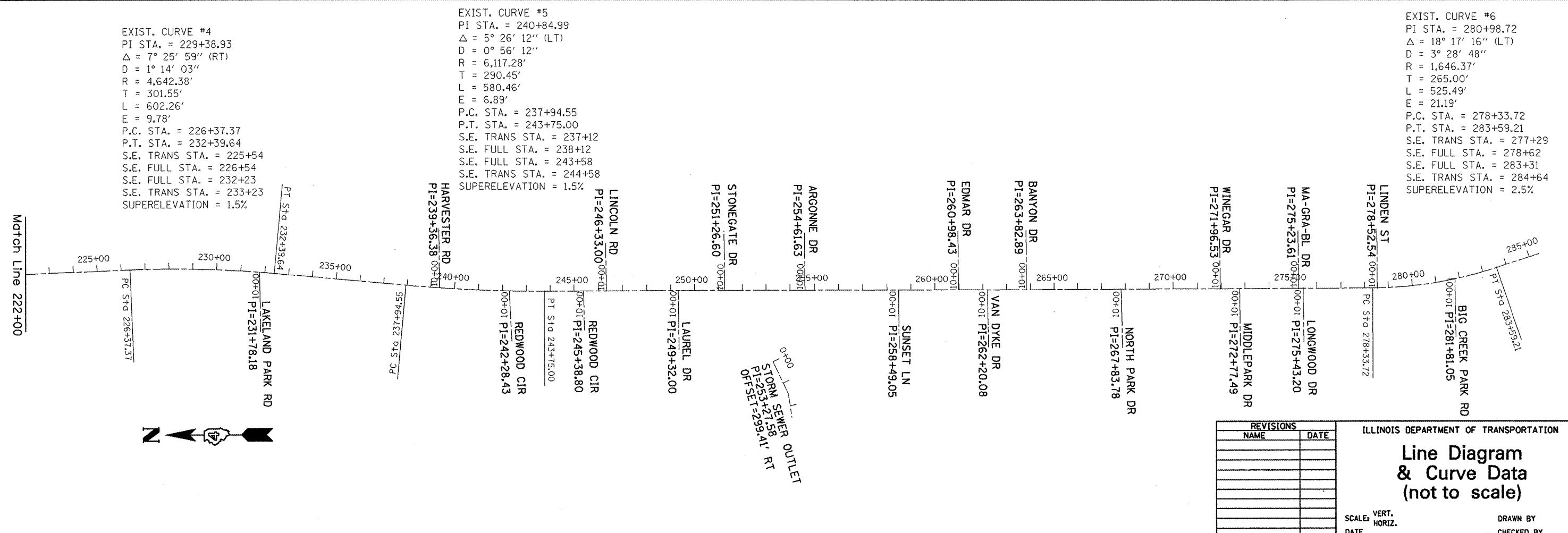
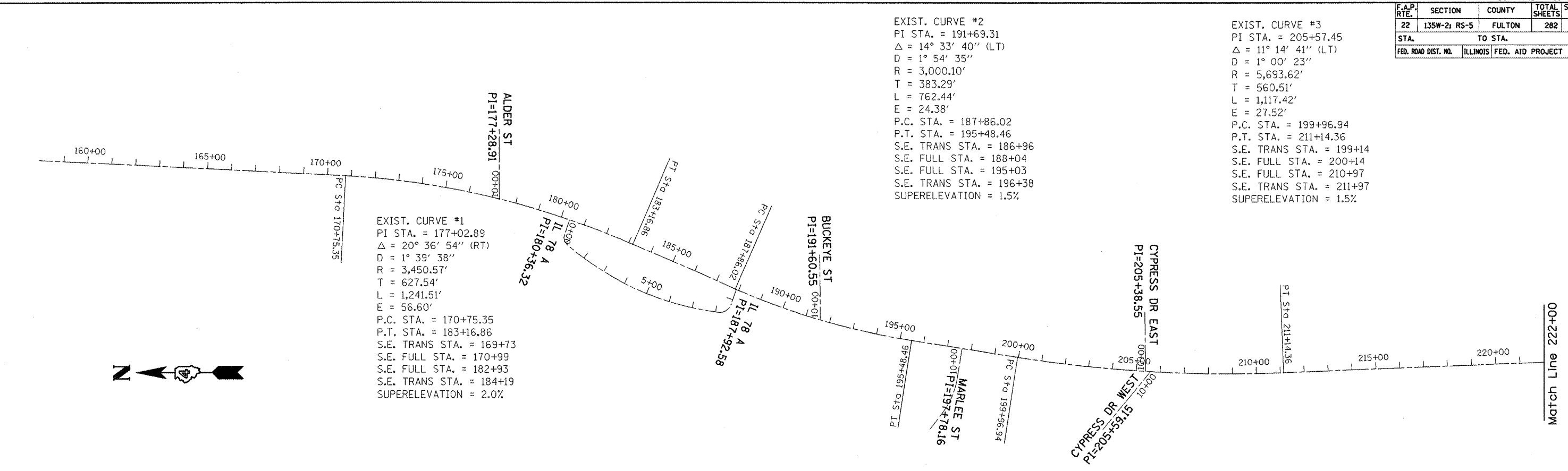
EXIST. CURVE #3  
 PI STA. = 205+57.45  
 $\Delta = 11^\circ 14' 41''$  (LT)  
 $D = 1^\circ 00' 23''$   
 $R = 5,693.62'$   
 $T = 560.51'$   
 $L = 1,117.42'$   
 $E = 27.52'$   
 P.C. STA. = 199+96.94  
 P.T. STA. = 211+14.36  
 S.E. TRANS STA. = 199+14  
 S.E. FULL STA. = 200+14  
 S.E. FULL STA. = 210+97  
 S.E. TRANS STA. = 211+97  
 SUPERELEVATION = 1.5%

EXIST. CURVE #1  
 PI STA. = 177+02.89  
 $\Delta = 20^\circ 36' 54''$  (RT)  
 $D = 1^\circ 39' 38''$   
 $R = 3,450.57'$   
 $T = 627.54'$   
 $L = 1,241.51'$   
 $E = 56.60'$   
 P.C. STA. = 170+75.35  
 P.T. STA. = 183+16.86  
 S.E. TRANS STA. = 169+73  
 S.E. FULL STA. = 170+99  
 S.E. FULL STA. = 182+93  
 S.E. TRANS STA. = 184+19  
 SUPERELEVATION = 2.0%

EXIST. CURVE #5  
 PI STA. = 240+84.99  
 $\Delta = 5^\circ 26' 12''$  (LT)  
 $D = 0^\circ 56' 12''$   
 $R = 6,117.28'$   
 $T = 290.45'$   
 $L = 580.46'$   
 $E = 6.89'$   
 P.C. STA. = 237+94.55  
 P.T. STA. = 243+75.00  
 S.E. TRANS STA. = 237+12  
 S.E. FULL STA. = 238+12  
 S.E. FULL STA. = 243+58  
 S.E. TRANS STA. = 244+58  
 SUPERELEVATION = 1.5%

EXIST. CURVE #6  
 PI STA. = 280+98.72  
 $\Delta = 18^\circ 17' 16''$  (LT)  
 $D = 3^\circ 28' 48''$   
 $R = 1,646.37'$   
 $T = 265.00'$   
 $L = 525.49'$   
 $E = 21.19'$   
 P.C. STA. = 278+33.72  
 P.T. STA. = 283+59.21  
 S.E. TRANS STA. = 277+29  
 S.E. FULL STA. = 278+62  
 S.E. FULL STA. = 283+31  
 S.E. TRANS STA. = 284+64  
 SUPERELEVATION = 2.5%

EXIST. CURVE #4  
 PI STA. = 229+38.93  
 $\Delta = 7^\circ 25' 59''$  (RT)  
 $D = 1^\circ 14' 03''$   
 $R = 4,642.38'$   
 $T = 301.55'$   
 $L = 602.26'$   
 $E = 9.78'$   
 P.C. STA. = 226+37.37  
 P.T. STA. = 232+39.64  
 S.E. TRANS STA. = 225+54  
 S.E. FULL STA. = 226+54  
 S.E. FULL STA. = 232+23  
 S.E. TRANS STA. = 233+23  
 SUPERELEVATION = 1.5%



REVISIONS	
NAME	DATE

ILLINOIS DEPARTMENT OF TRANSPORTATION

### Line Diagram & Curve Data (not to scale)

SCALE: VERT. \_\_\_\_\_  
 HORIZ. \_\_\_\_\_

DATE \_\_\_\_\_ DRAWN BY \_\_\_\_\_  
 CHECKED BY \_\_\_\_\_

PLT DATE = 8/18/2008  
 FILE NAME = o:\proj\mca\1170\conton\gen\dwg\12.dgn  
 PLOT SCALE = 1/8"=1'-0"  
 REFERENCE =