

F.A.P. RTE.	SECTION	COUNTY	TOTAL SHEETS	SHEET NO.
22	135W-2; RS-5	FULTON	282	61
STA.		TO STA.		
FED. ROAD DIST. NO.		ILLINOIS FED. AID PROJECT		

STAGE II CONSTRUCTION ACTIVITY

1. Remove pavement, paved shoulder, and gutter LT station 265+50 to 269+77 and LT station 271+52 to 273+21
2. Build hot-mix asphalt base course, combination concrete curb and gutter, storm sewer, concrete entrances, and sidewalk LT station 263+83 to 269+77 and LT station 271+52 to 273+21
3. Build temporary pavement LT station 273+21 to 274+85.

Note: the existing ditch from LT station 269+48 to 271+52 will drain into the Type A manhole at LT station 271+55.

LEGEND

- Hot-Mix Asphalt Base Course 10.5"
- Variable Milling
- Temporary Pavement
- Flagger
- Traffic Lane

STAGE II TRAFFIC CONTROL

1. Traffic shifts west to temporary pavement
2. Close Winegar Drive during pavement removal and replacement.
3. TRAFFIC CONTROL AND PROTECTION (SPECIAL), LOCATION 2 & BLR-21
4. Use Vertical Barricades (STD 701901) at 50' spacings along RT edge of NB lane

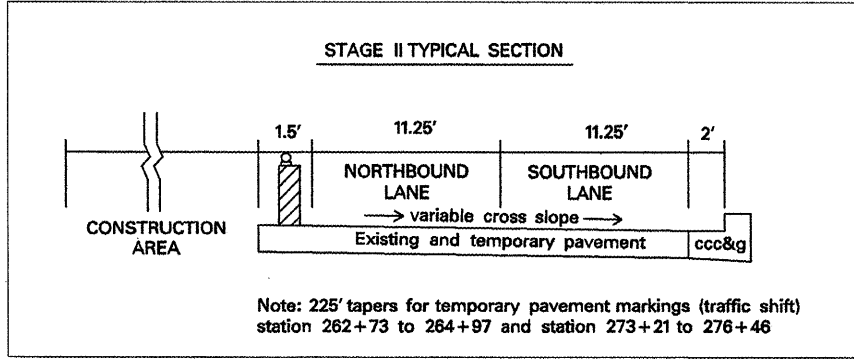
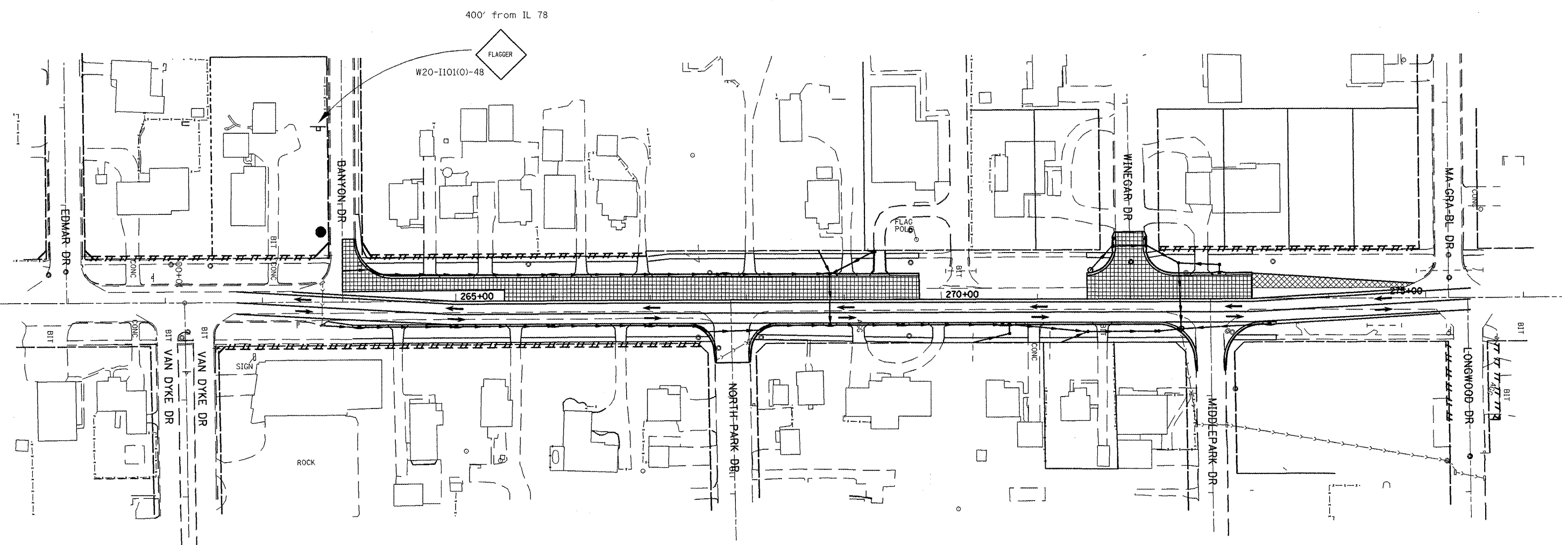
GENERAL CONSTRUCTION NOTES

1. Adequate pavement drainage shall be maintained during all stages of construction.
2. Use temporary pavement over storm sewer where the pavement is to be removed during a later stage.

GENERAL STAGING NOTES

All construction staging is suggested and can be revised upon written approval from the resident engineer two weeks prior to starting work. There will be no adjustment in the traffic control unit price due to the contractor changing the planned construction sequence.

Temporary pavement taper width: 15' at station LT 273+21 to 5' at LT station 274+85



REVISIONS	
NAME	DATE

ILLINOIS DEPARTMENT OF TRANSPORTATION

New Pavement Stage II Construction

SCALE: VERT. _____
HORIZ. _____
DATE _____

DRAWN BY _____
CHECKED BY _____

PLOT DATE = 6/16/2008
 FILE NAME = c:\pav\mva\178\banon\general.dgn
 PLOT SCALE = 1/8"=1'-0"
 USER NAME = hickstrome

 W20-1(O)-48 400' from start of taper on north end and south end	 W1-4R(O)-48 200' from start of taper on north end	 W1-4L(O)-48 200' from start of taper on south end
 W13-1(O)-2424 35 MPH	 W13-1(O)-2424 35 MPH	 W13-1(O)-2424 35 MPH

