

F.A.P. RTE.	SECTION	COUNTY	TOTAL SHEETS	SHEET NO.
22	135W-2; RS-5	FULTON	282	92
STA.		TO STA.		
FED. ROAD DIST. NO.		ILLINOIS FED. AID PROJECT		

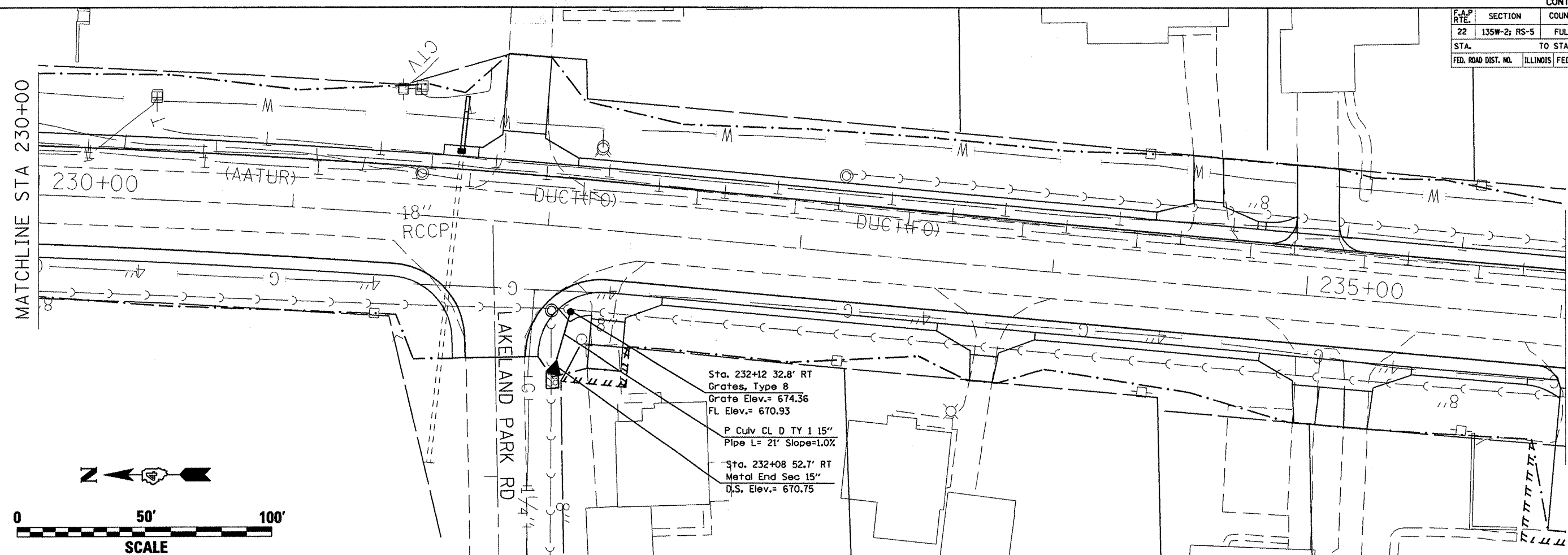
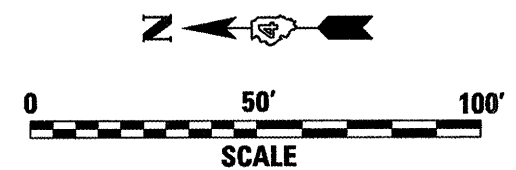
PLAN	DATE
SURVEYED	
NOTE BOOK	
NO.	

PROFILE	DATE
SURVEYED	
NOTE BOOK	
NO.	

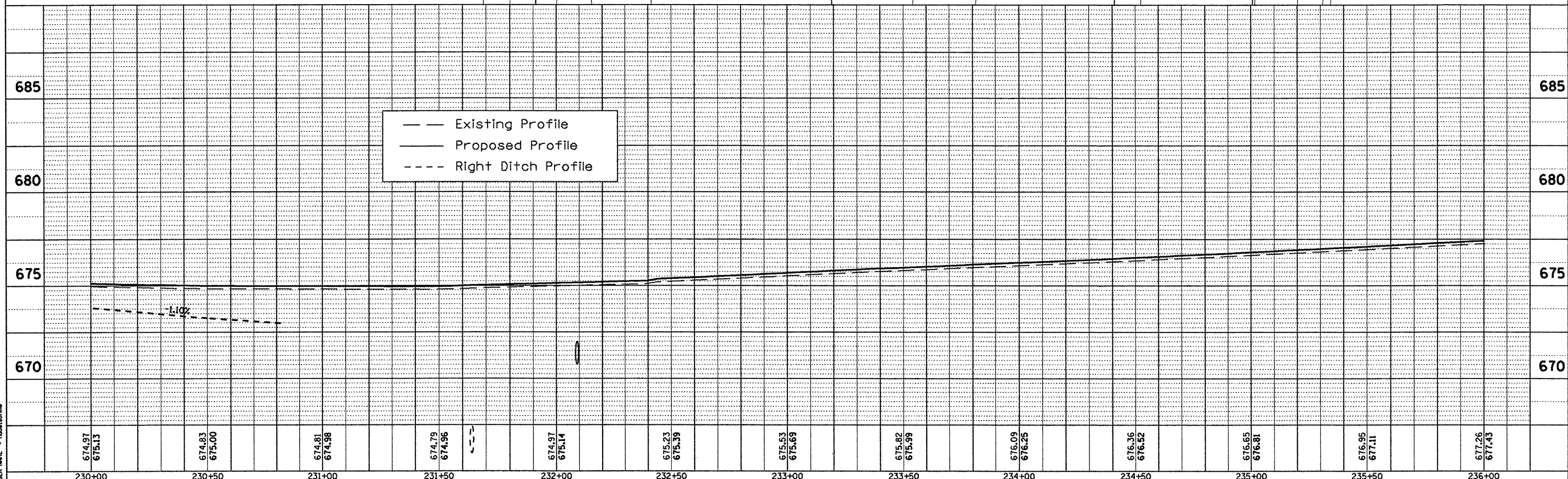
PLOT DATE = 6/15/2008  
 FILE NAME = c:\pvc\pva\17\Bouton\General2.dgn  
 PLOT SCALE = 42.474 / IN  
 USER NAME = hcd\hcd

MATCHLINE STA 230+00

MATCHLINE STA 236+00



Sta. 232+12 32.8' RT  
 Grates, Type B  
 Grate Elev.= 674.36  
 FL Elev.= 670.93  
 P Culv CL D TY 1 15"  
 Pipe L= 21' Slope=1.0%  
 Sta. 232+08 52.7' RT  
 Metal End Sec 15"  
 D.S. Elev.= 670.75



— Existing Profile  
 - - - Proposed Profile  
 . . . Right Ditch Profile

674.97	675.13	674.83	675.00	674.81	674.98	674.79	674.96	674.97	675.14	675.23	675.39	675.53	675.69	675.82	675.99	676.09	676.25	676.36	676.52	676.65	676.81	676.95	677.11	677.26	677.43	
230+00	230+50	231+00	231+50	232+00	232+50	233+00	233+50	234+00	234+50	235+00	235+50	236+00														