

F.A.P. RTE.	SECTION	COUNTY	TOTAL SHEETS	SHEET NO.
22	135W-2; RS-5	FULTON	282	105
STA. TO STA.		FED. ROAD DIST. NO. ILLINOIS FED. AID PROJECT		

EXIST. ϕ FAP 22 (IL 78) CURVE DATA
 PI STA. = 205+57.46
 Δ = 11° 14' 41" (LT)
 D = 1° 00' 23"
 R = 5,693.62'
 T = 560.51'
 L = 1,117.42'
 E = 27.52'
 P.C. STA. = 199+96.95
 P.T. STA. = 211+14.37

PROPOSED ϕ FAP 22 (IL 78) CURVE DATA
 PI STA. = 229+38.93
 Δ = 7° 25' 59" (RT)
 D = 1° 14' 03"
 R = 4,642.38'
 T = 301.55'
 L = 602.26'
 E = 9.78'
 P.C. STA. = 226+37.38
 P.T. STA. = 232+39.64



NE 1/4 SEC. 15

T7N R4E
SE 1/4 SEC. 15

S LINE SE
1/4 SEC. 15

N. LINE OF THE
NE 1/4 SEC. 22

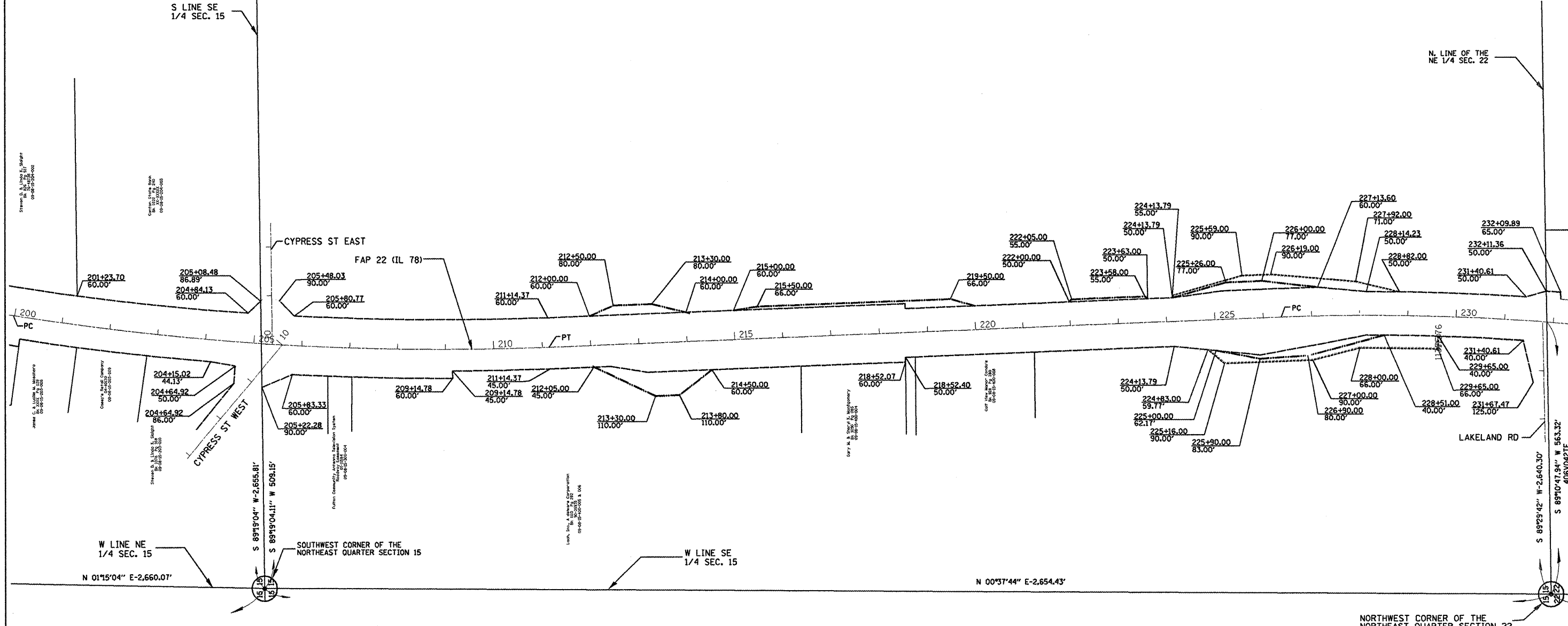
APPROVED BY _____ DISTRICT ENGINEER
DATE _____

i178canton
i178a-krow.ipf
Jobrow.gpk
row.m32

DRAWN BY _____ PCF
WRITTEN BY _____ PCF
CHECKED BY _____ PCF
INSPECTED BY _____ PCF

FAP 22 (IL 78) STA. 205+38.55 =
CYPRESS ST. EAST STA. 10+00.00
FAP 22 (IL 78) STA. 205+59.15 =
CYPRESS ST. WEST STA. 10+00.00
FAP 22 (IL 78) STA. 231+78.19 =
LAKELAND DRIVE STA. 10+00.00

LEGEND
EXISTING RIGHT OF WAY _____
PROPOSED RIGHT OF WAY _____
TEMPORARY EASEMENT // // // // // // //



NORTHWEST CORNER OF THE
NORTHEAST QUARTER SECTION 22

Platfile:

RIGHT OF WAY PLANS
FAP ROUTE 22 (IL 78)

PROJECT _____ SECTION 135W-2; RS-5

STATION 200+00.00 TO _____

STATION 231+00.00 _____

COUNTY FULTON

SCALE 1"=100' SHEET 4 OF 7

FOR OLD R.O.W. SEE:
PLANFILE: 11 SHEET: 46