

| F.A.P. RTE.  | SECTION      | COUNTY  | TOTAL SHEETS | SHEET NO. |
|--------------|--------------|---|--------------|-----------|
| 22           | 135W-2; RS-5 | FULTON  | 282          | 107       |
| STA. TO STA. |              | FED. ROAD DIST. NO. ILLINOIS FED. AID PROJECT |              |           |



T7N R4E  
SE 1/4 SEC. 22

FAP 22 (IL 78) STA 260+98.43=  
EDMAR DRIVE STA 10+00.00  
FAS 22 (IL 78) STA 263+82.89=  
BANYON DRIVE STA 10+00.00  
FAP 22 (IL 78) STA 271+86.54=  
WINEGARD DR STA 10+00.00  
FAP 22 (IL 78) STA 275+23.61=  
MA-GRA-BL DR STA 10+00.00  
FAP 22 (IL 78) STA 278+52.54=  
LINDEN DRIVE STA 10+00.00

APPROVED BY \_\_\_\_\_ DISTRICT ENGINEER  
DATE \_\_\_\_\_

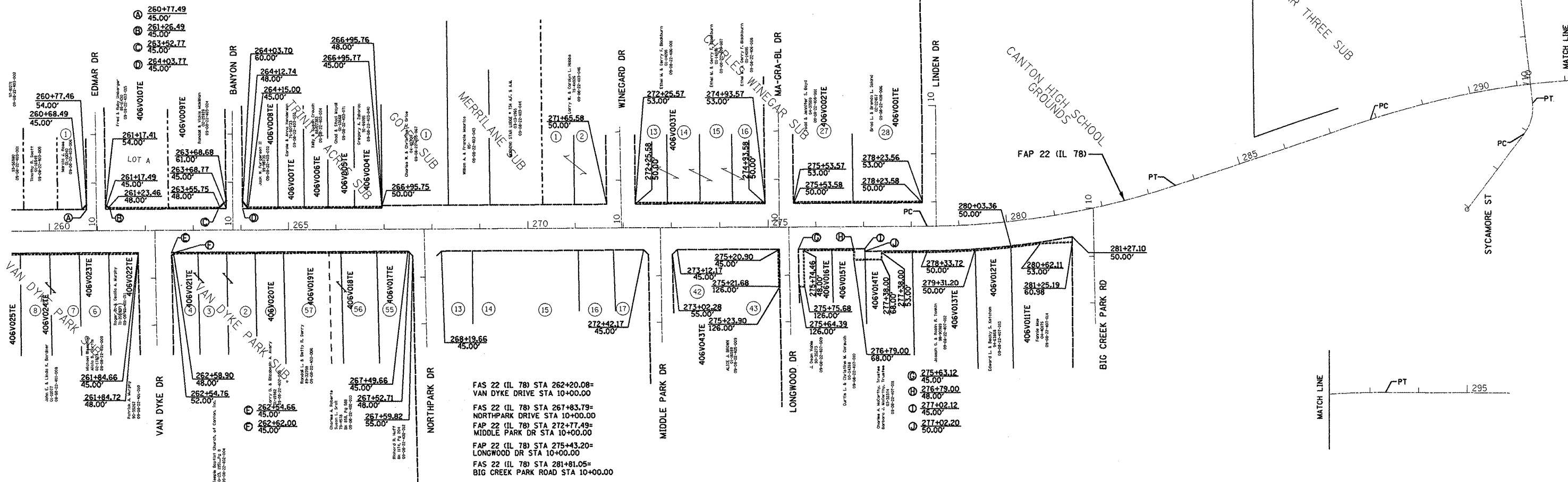
ii78canton  
ii78g-krow.ipf  
Jobrow.gpk  
r.w.m32

DRAWN BY \_\_\_\_\_ PCF  
WRITTEN BY \_\_\_\_\_ PCF  
CHECKED BY \_\_\_\_\_ PCF  
INSPECTED BY \_\_\_\_\_ PCF

EDITH M. RORER SUB

PAR THREE SUB

CANTON HIGH SCHOOL  
GROUNDS



LEGEND  
 EXISTING RIGHT OF WAY \_\_\_\_\_  
 PROPOSED RIGHT OF WAY \_\_\_\_\_  
 TEMPORARY EASEMENT // // // // // // // //

EXISTING C FAP 22 (IL 78)  
 CURVE DATA  
 PI STA. = 280+98.72  
 Δ = 18° 17' 16" (LT)  
 D = 3° 28' 48"  
 R = 1,646.37'  
 T = 265.00'  
 L = 525.49'  
 E = 21.19'  
 P.C. STA. = 278+33.72  
 P.T. STA. = 283+59.22

EXISTING C FAP 22 (IL 78)  
 CURVE DATA  
 PI STA. = 290+62.40  
 Δ = 18° 52' 53" (RT)  
 D = 3° 27' 52"  
 R = 1,653.84'  
 T = 275.00'  
 L = 545.01'  
 E = 22.71'  
 P.C. STA. = 287+87.40  
 P.T. STA. = 293+32.41

C SYCAMORE ST.  
 CURVE DATA  
 PI STA. = 9+27.81  
 Δ = 43° 24' 45" (LT)  
 D = 63° 36' 00"  
 R = 90.09'  
 T = 35.86'  
 L = 68.26'  
 E = 6.88'  
 P.C. STA. = 8+91.95  
 P.T. STA. = 9+60.21

FOR OLD R.O.W. SEE  
PLANFILE: 11 SHEET: 48-49

Platfile:  
**RIGHT OF WAY PLANS**  
**FAP ROUTE 22 (IL 78)**

PROJECT \_\_\_\_\_ SECTION 135W-2; RS-5  
 STATION 262+54.66 TO \_\_\_\_\_  
 STATION 295+00.00  
 COUNTY FULTON  
 SCALE 1"=100' SHEET 6 OF 7