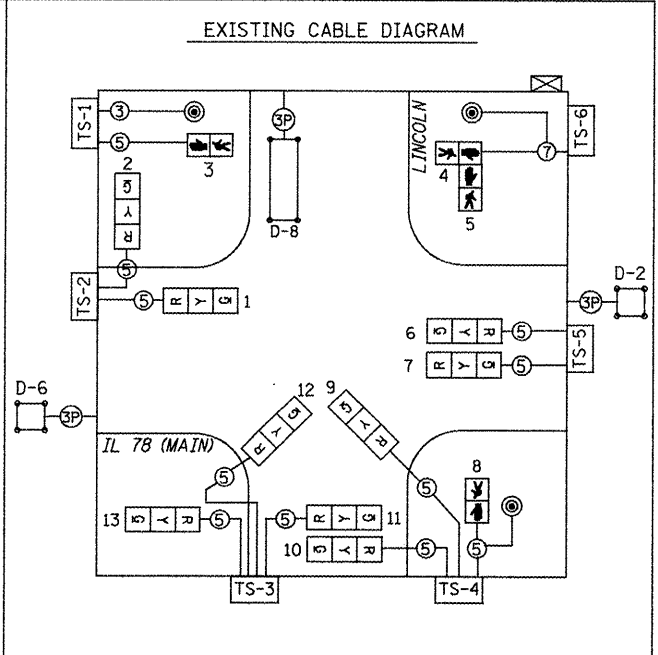
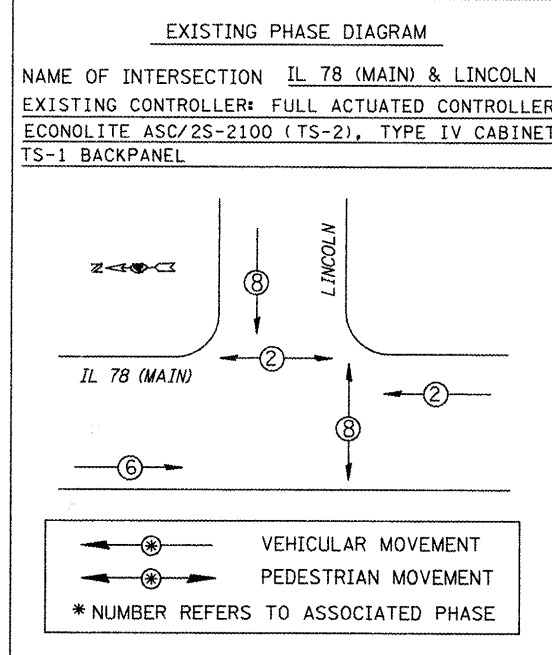
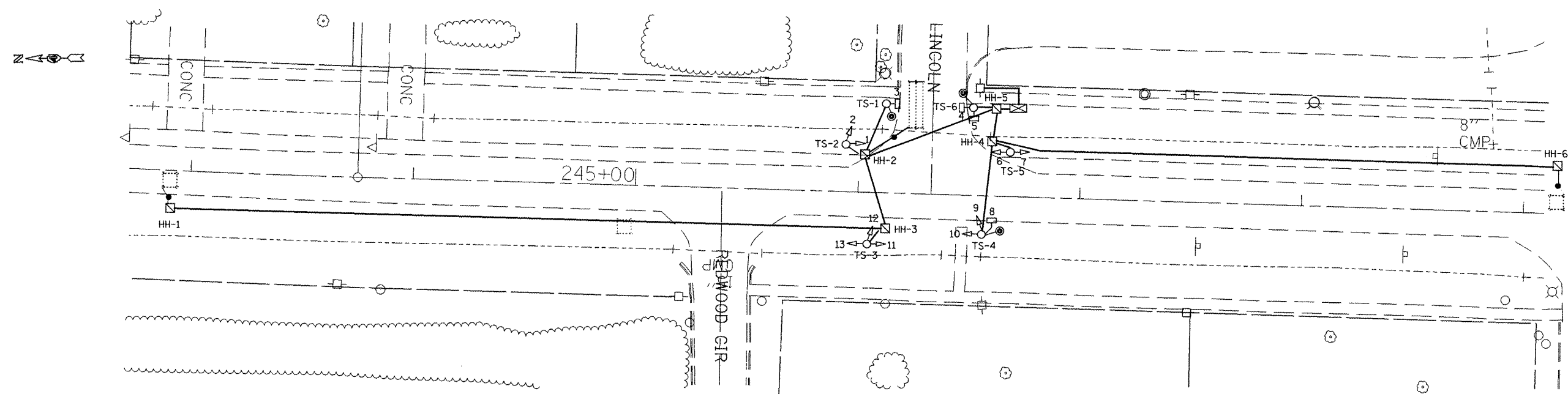


F.A.P. RTE.	SECTION	COUNTY	TOTAL SHEETS	SHEET NO.
22	135W-2, RS-5	FULTON	282	117
STA.		TO STA.		
FED. ROAD DIST. NO.		ILLINOIS	FED. AID PROJECT	



EXISTING TRAFFIC SIGNAL LEGEND

- ☐ EX. HANDHOLE (STD. OR HEAVY-DUTY)
- EX. CONDUIT
- ▨ EX. DETECTOR LOOP (6' X 40')
- ▤ EX. DETECTOR LOOP (6' X 6')
- ☒ EX. CONTROLLER CABINET
- ⊞ EX. ELECTRICAL SERVICE
- ⊞ EX. TRAFFIC SIGNAL HEAD
- ⊞ EX. PEDESTRIAN SIGNAL HEAD
- ⊙ EX. PEDESTRIAN PUSHBUTTON

REMOVE EXISTING HANDHOLE - QTY. 5 EA.	
QTY.	LOCATIONS
1.0 EA.	HH-1, HH-2, HH-3, HH-4, HH-6

REMOVE EXISTING CONCRETE FOUNDATIONS - QTY. 6 EA.	
QTY.	LOCATIONS
1.0 EA.	TS-1, TS-2, TS-3, TS-4, TS-5, TS-6

REMOVE EXISTING TRAFFIC SIGNAL EQUIPMENT, SPECIAL - QTY. 1 LUMP SUM

THE FOLLOWING TRAFFIC SIGNAL EQUIPMENT SHALL BE REMOVED AND DELIVERED BY THE CONTRACTOR TO THE ILLINOIS DEPARTMENT OF TRANSPORTATION, 1025 W. DETWEILLER DR., PEORIA, IL. PLEASE CONTACT PAUL GRANT AT (309) 671-4474 FORTY-EIGHT HOURS IN ADVANCE OF DELIVERY.

QTY.	ITEM
1.0	CONTROLLER CABINET AND CONTENTS COMPLETE

THE FOLLOWING ITEMS SHALL BE REMOVED AND DISPOSED OF BY THE CONTRACTOR OFF OF THE RIGHT-OF-WAY. THE SALVAGE VALUE OF THIS EQUIPMENT SHALL BE REFLECTED IN THE UNIT BID PRICE FOR REMOVE EXISTING TRAFFIC SIGNAL EQUIPMENT, SPECIAL.

QTY.	ITEM
9.0	SIGNAL HEAD, 1-FACE, 3-SECTION, POST OR BRACKET MOUNTED
4.0	PEDESTRIAN SIGNAL HEAD, 1-FACE, POST OR BRACKET MOUNTED
6.0	TRAFFIC SIGNAL POST AND BASE, WITH PEDESTRIAN PUSHBUTTONS
1.0	ELECTRIC SERVICE INSTALLATION
ALL	ELECTRIC CABLE

- EXISTING TRAFFIC SIGNAL AND REMOVAL NOTES**
1. THE REMOVAL ITEMS ARE AS INDICATED ON THE PLANS. THE CONTRACTOR SHALL VERIFY ALL REMOVAL ITEMS PRIOR TO BIDDING.
 2. THE EXISTING TRAFFIC SIGNALS SHALL REMAIN IN OPERATION DURING THE CONSTRUCTION OF THE ROADWAY AS LONG AS POSSIBLE. AFTER REMOVAL OF THE TRAFFIC SIGNALS, TRAFFIC FROM LINCOLN SHALL BE CONTROLLED WITH A TEMPORARY STOP SIGN EQUIPPED WITH A "CROSS TRAFFIC DOES NOT STOP" (W4-4P) SIGN, AND A RED SOLAR-POWERED FLASHER. THE CONTRACTOR SHALL FURNISH THE TEMPORARY SIGN POST, STOP SIGN, W4-4P SIGN, AND FLASHER FOR USE DURING CONSTRUCTION OF THE PERMANENT TRAFFIC SIGNALS. THE CONTRACTOR SHALL RETURN THE FLASHER TO IDOT AT THE CONCLUSION OF THE PROJECT. THIS WORK WILL BE PAID FOR AS "SOLAR-POWERED FLASHING BEACON ASSEMBLY (COMPLETE)".
 3. ANY MAINTENANCE OF THE EXISTING SIGNALS SHALL BE CONSIDERED EXTRA WORK IN ACCORDANCE WITH ARTICLE 109.04 OF THE STANDARD SPECIFICATIONS.
 4. FULL DEPTH SAW CUTS SHALL BE REQUIRED AT ALL REMOVAL LIMITS. IF THE CONTRACTOR REMOVES OR DAMAGES THE EXISTING SIDEWALK OR BITUMINOUS SURFACE OUTSIDE THE REMOVAL LIMITS DESIGNATED BY THE ENGINEER, THE CONTRACTOR SHALL REMOVE AND/OR REPLACE THAT PORTION AT THE CONTRACTOR'S EXPENSE.
 5. THE EXISTING HANDHOLES (STANDARD OR HEAVY-DUTY) SHALL BE REMOVED. THIS WORK WILL BE PAID FOR AS "REMOVE EXISTING HANDHOLE".

SCHEDULE OF QUANTITIES

ITEM DESCRIPTION	UNIT	QUANTITY
REMOVE EXISTING TRAFFIC SIGNAL EQUIPMENT, SPECIAL	L SUM	1.0
REMOVE EXISTING CONCRETE FOUNDATIONS	EACH	6.0
REMOVE EXISTING HANDHOLE	EACH	5.0

TRAFFIC SIGNALS
 SHEET 1 OF 5
 NOT TO SCALE

REVISIONS	
NAME	DATE

ILLINOIS DEPARTMENT OF TRANSPORTATION
 EXISTING TRAFFIC SIGNALS
 IL 78 (MAIN) & LINCOLN
 CANTON
 FULTON COUNTY

SCALE: VERT. _____
 HORIZ. _____
 DATE _____ DRAWN BY _____
 CHECKED BY _____

PLOT DATE: 8/16/2009
 FILE NAME: I:\Projects\11726\Main & Lincoln Traffic Signals - Revised 8-16-09 Final.dgn
 USER: broun