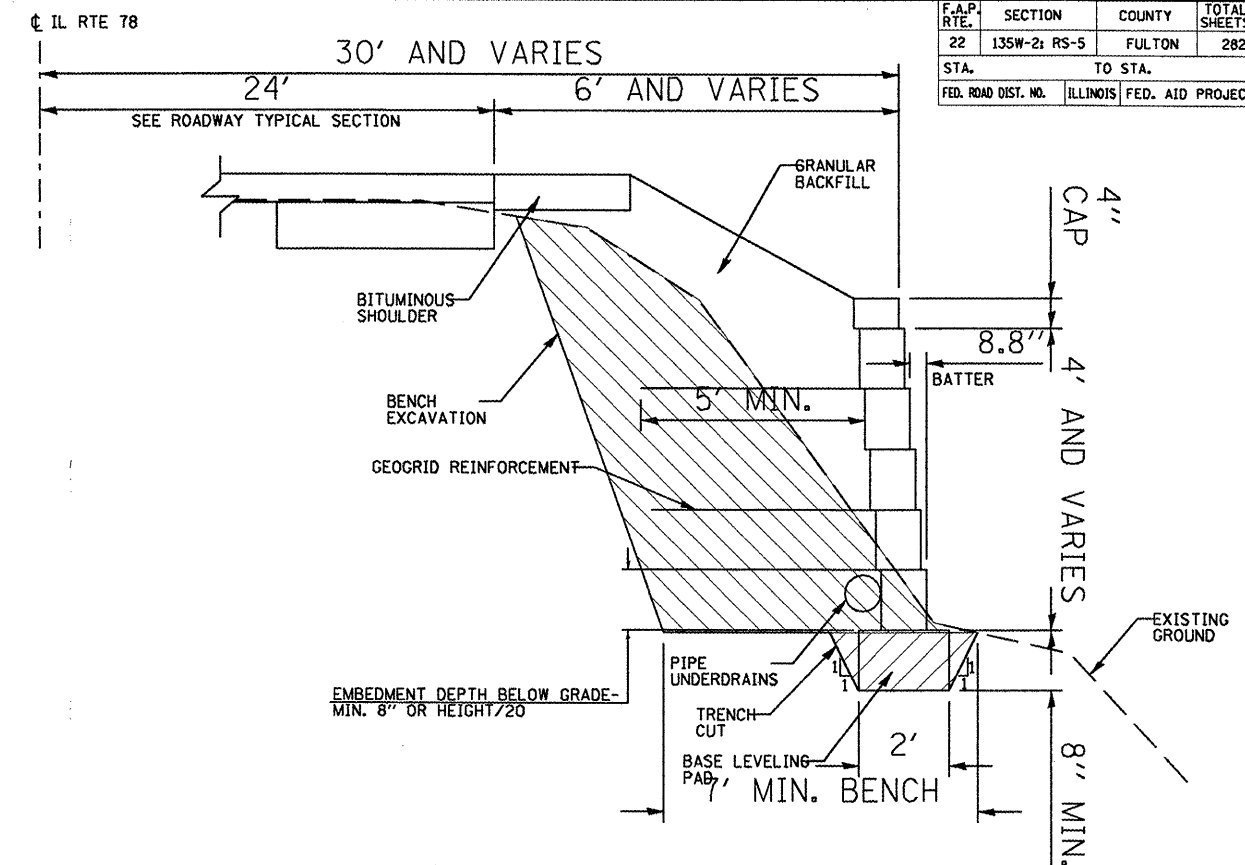
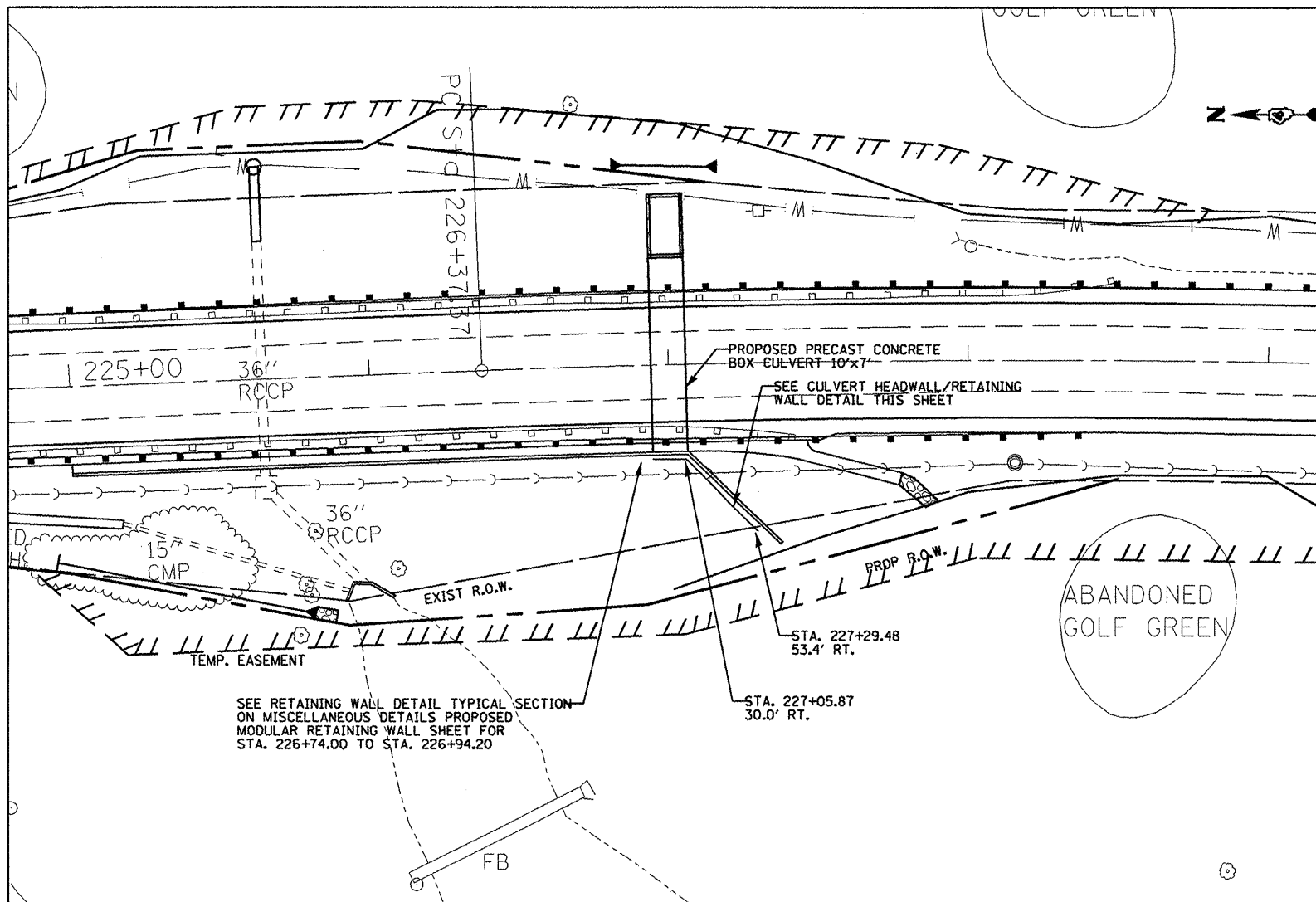


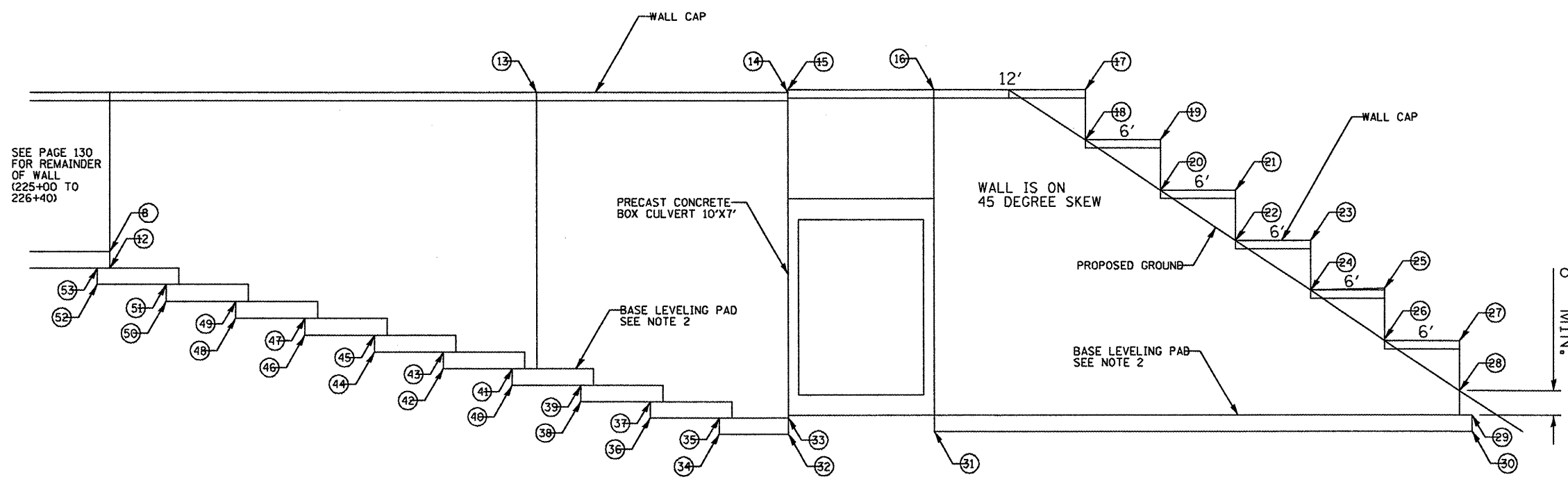
F.A.P. RTE.	SECTION	COUNTY	TOTAL SHEETS	SHEET NO.
22	135W-21 RS-5	FULTON	282	131
STA.		TO STA.		
FED. ROAD DIST. NO.		ILLINOIS FED. AID PROJECT		



CULVERT HEADWALL/RETAINING WALL DETAIL  
NO SCALE

NO.	STATION	ELEV.
13	226+74.00	676.92
14	226+84.00	676.92
15	226+84.00	677.12
16	227+05.87	677.12
17	227+14.36	677.12
18	227+14.36	675.12
19	227+18.81	675.12
20	227+18.81	673.12
21	227+22.85	673.12
22	227+22.85	671.12
23	227+27.10	671.12
24	227+27.10	669.12
25	227+31.34	669.12
26	227+31.34	667.12
27	227+35.59	667.12
28	227+35.59	665.12
29	227+36.59	664.12
30	227+36.59	663.45
31	227+05.87	663.45
32	226+84.00	663.25
33	226+84.00	663.92

NO.	STATION	ELEV.
34	226+88.50	663.25
35	226+88.50	663.92
36	226+83.00	663.92
37	226+83.00	664.59
38	226+77.50	664.59
39	226+77.50	665.25
40	226+72.00	665.25
41	226+72.00	665.92
42	226+66.50	665.92
43	226+66.50	666.59
44	226+61.00	666.59
45	226+61.00	667.26
46	226+55.50	667.26
47	226+55.50	667.92
48	226+50.00	667.92
49	226+50.00	668.59
50	226+44.50	668.59
51	226+44.50	669.26
52	226+39.00	669.26
53	226+39.00	669.92



HEADWALL/RETAINING WALL ELEVATION  
STA. 226+39.00 TO STA. 227+36.59

NOTES:

1. QUANTITIES SHOWN IN THE BILL OF MATERIALS ARE FOR INFORMATION ONLY WITH ACTUAL QUANTITIES TO BE DETERMINED BY THE MANUFACTURER OF THE WALL SYSTEM. THOSE QUANTITIES IDENTIFIED AS "MIN." CAN BE INCREASED AS REQUIRED BY THE DESIGNER BUT CAN ONLY BE DECREASED IN PROPORTION TO A REDUCTION IN THE SQUARE FOOTAGE OF WALL CONSTRUCTED.
2. THE BASE LEVELING PAD MAY BE EITHER CRUSHED STONE OR CONCRETE.

REVISIONS	
NAME	DATE

ILLINOIS DEPARTMENT OF TRANSPORTATION

**PROPOSED MODULAR RETAINING WALL (2 of 2)**

SCALE: VERT. \_\_\_\_\_  
HORIZ. \_\_\_\_\_

DATE \_\_\_\_\_ DRAWN BY \_\_\_\_\_  
CHECKED BY \_\_\_\_\_

MAUER & STUTZ, INC.  
SURVEYORS

PLOT DATE = 8/19/2008  
FILE NAME = c:\p\proj\117\hamton\gnew\02.dgn  
PLOT SCALE = 1/8" = 1'-0"  
USER NAME = hudson