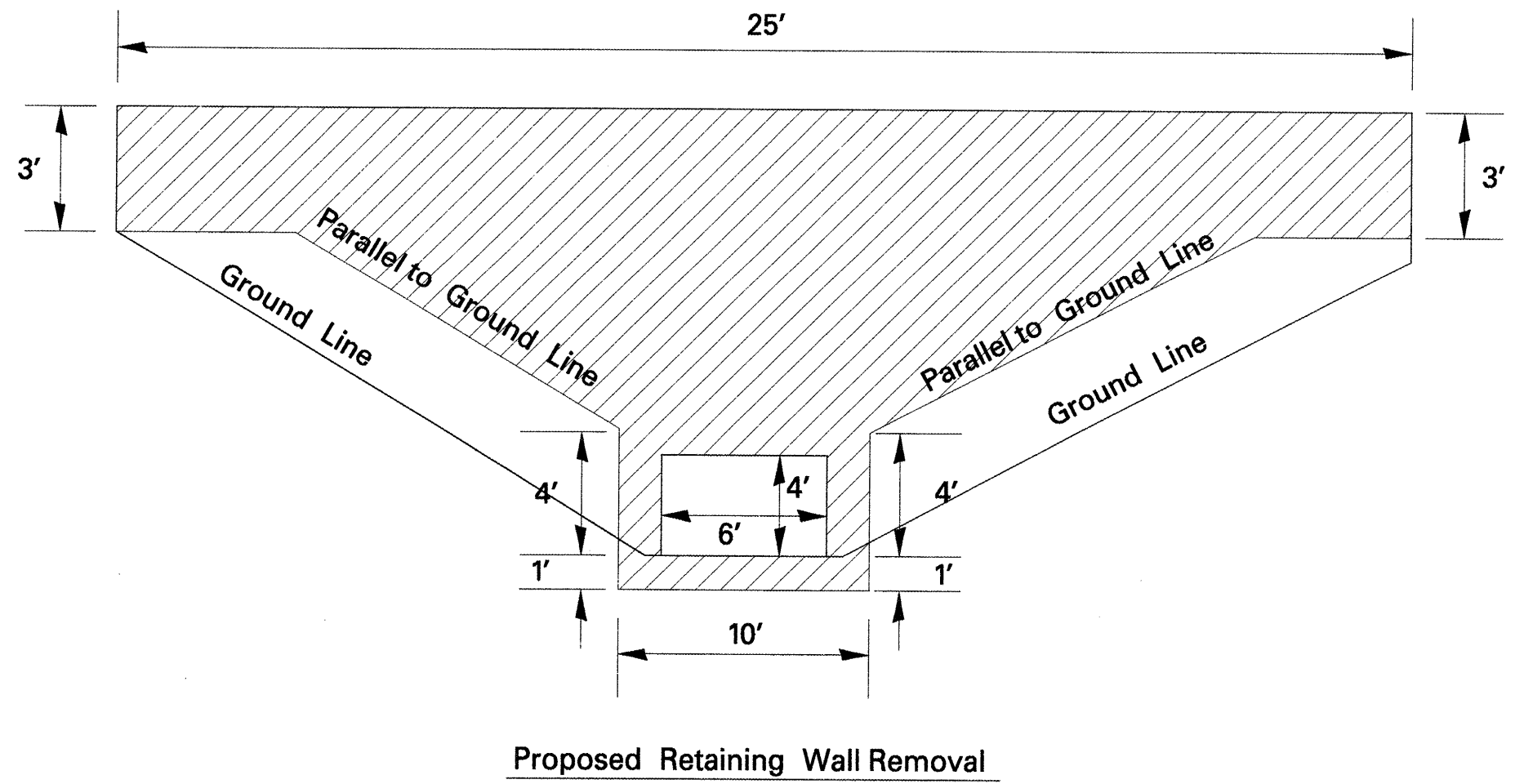
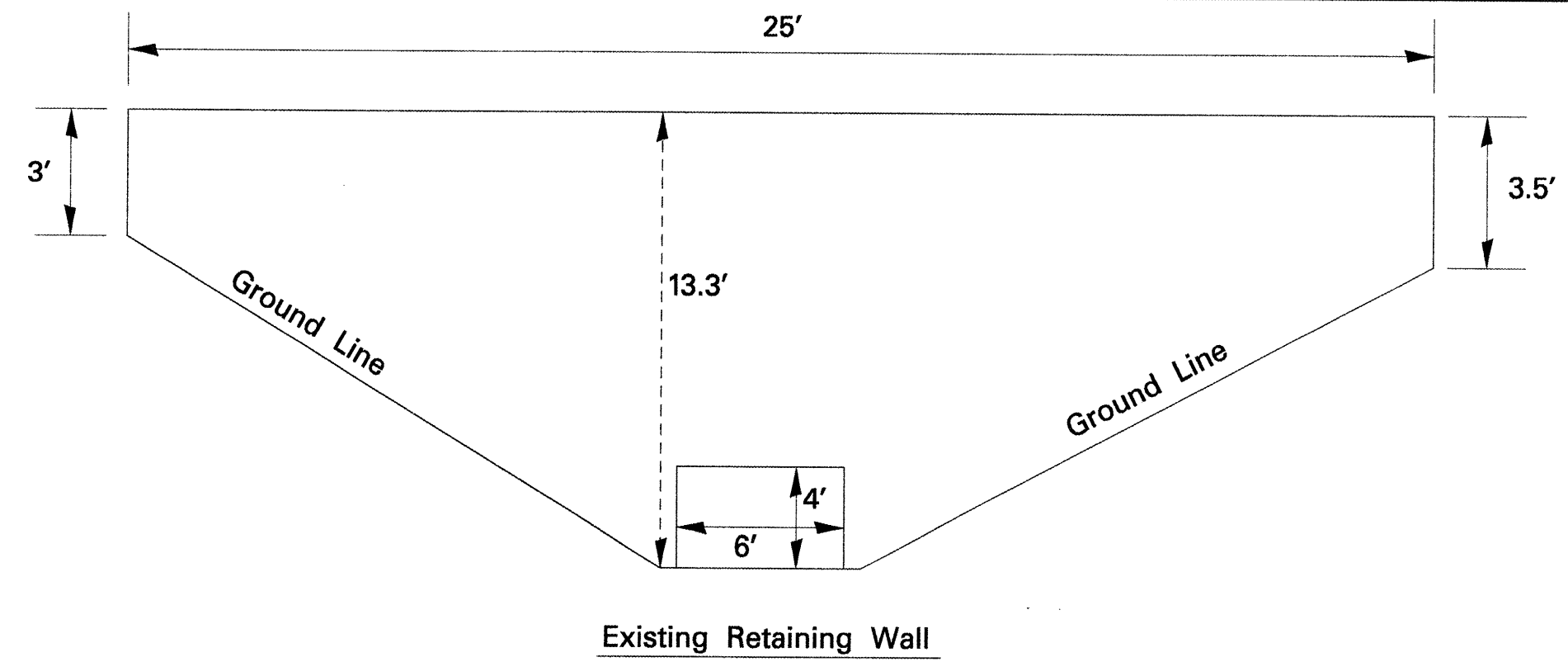
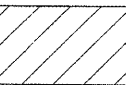


F.A.P. RTE.	SECTION	COUNTY	TOTAL SHEETS	SHEET NO.
22	135W-2; RS-5	FULTON	282	140
STA.		TO STA.		
FED. ROAD DIST. NO.		ILLINOIS	FED. AID PROJECT	



 Retaining Wall Removal (Sq. Ft.)

Retaining Wall Removal  
188 Sq Ft  
RT Sta. 190 + 55

REVISIONS	
NAME	DATE

ILLINOIS DEPARTMENT OF TRANSPORTATION  
**Retaining Wall Removal Detail**  
(not to scale)

SCALE: VERT. \_\_\_\_\_  
HORIZ. \_\_\_\_\_

DATE \_\_\_\_\_ DRAWN BY \_\_\_\_\_  
CHECKED BY \_\_\_\_\_

PLOT DATE = 8/16/2006  
FILE NAME = \\bentley\178bentley\general\2.dgn  
PLOT SCALE = 1/8"=1'-0"  
USER NAME = hudelecm