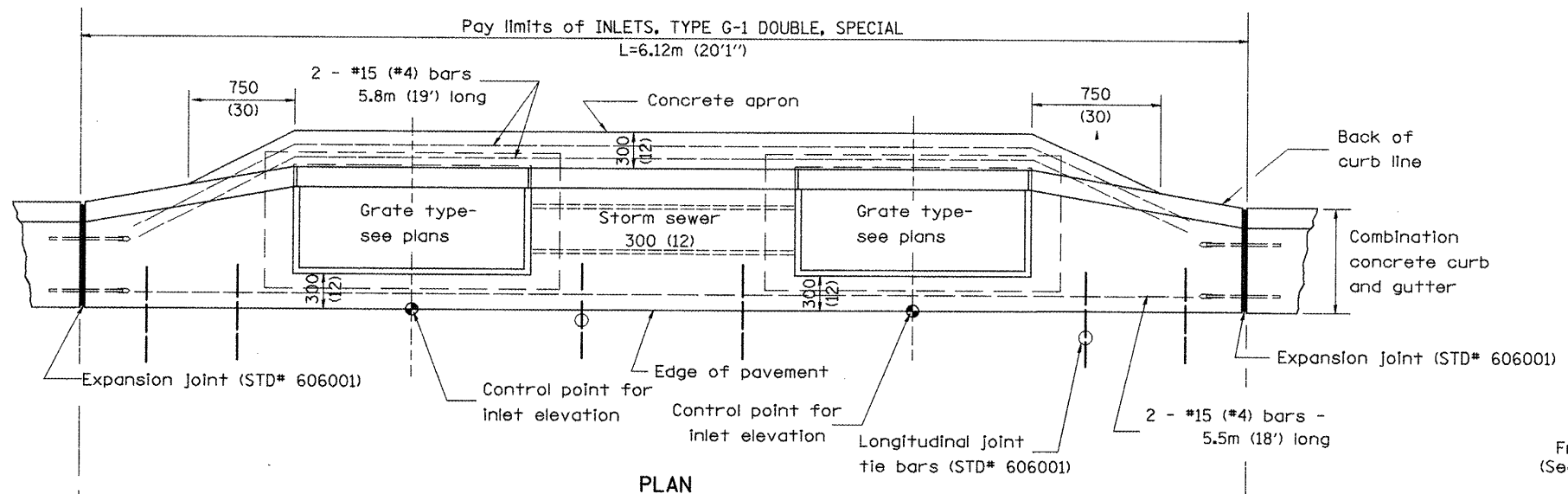
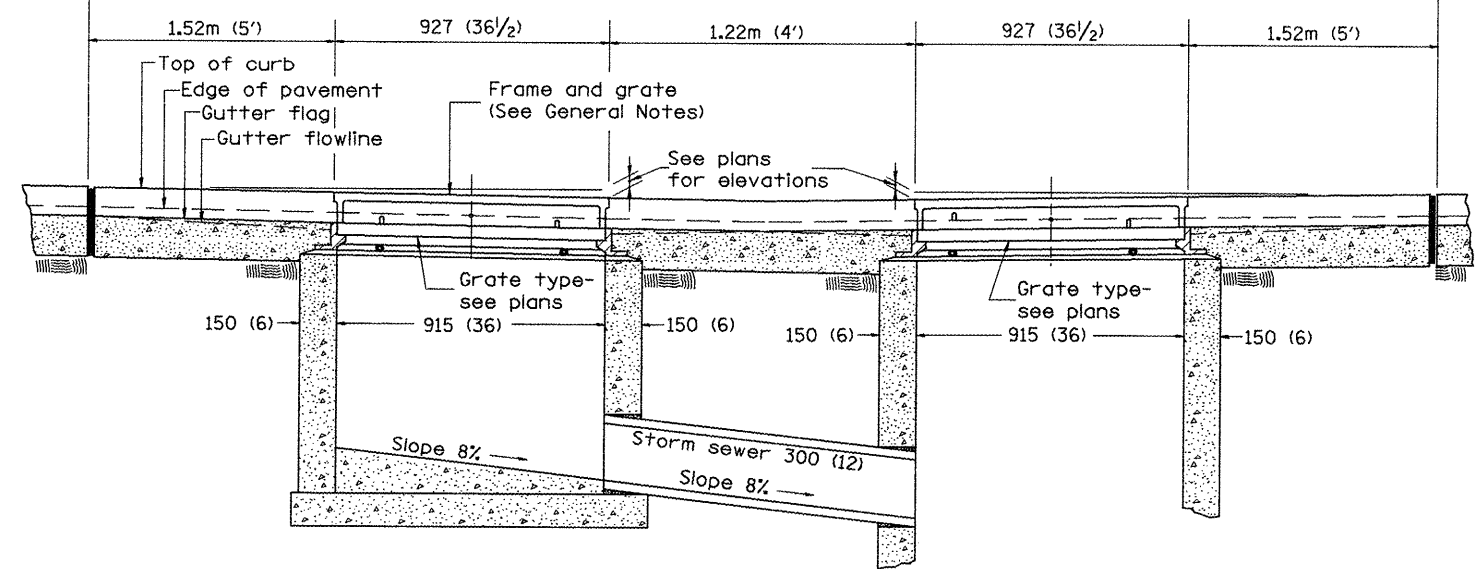


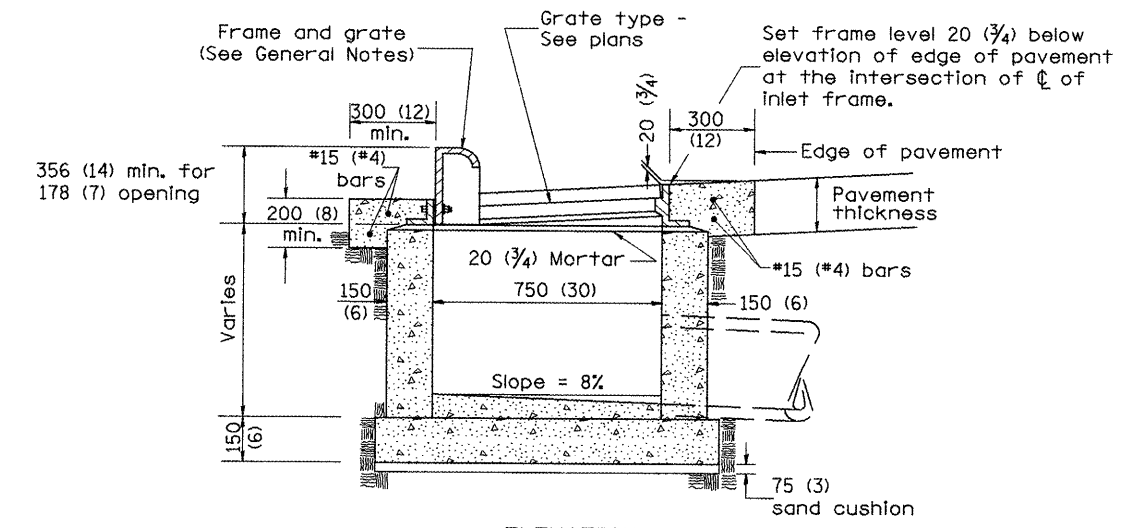
CONTRACT NO. 68114				
F.A.P. RTE.	SECTION	COUNTY	TOTAL SHEETS	SHEET NO.
22	135W-2: RS-5	FULTON	282	172
STA.		TO STA.		
FED. ROAD DIST. NO.	ILLINOIS	FED. AID PROJECT		



PLAN



FRONT ELEVATION



ELEVATION (SIDE)

GENERAL NOTES

1. Inlet construction shall be in accordance with Section 602 of the Standard Specifications.
2. Combination Concrete Curb & Gutter shall be constructed in accordance with Section 606 of the Standard Specifications.
3. See District CADD Standard 604001-D4 for frame and grates.

All dimensions are in millimeters (inches) unless otherwise noted.

ILLINOIS DEPARTMENT OF TRANSPORTATION	
DISTRICT CADD STANDARD	
INLETS, TYPE G-1 DOUBLE, SPECIAL	
CADD STANDARD 602016-D4	DRAWN BY CADD
SCALE NOT TO SCALE	CHECKED BY

DATE	BY
1-1-97	RENUM. B-4.04, NEW REVISION BOX
4-1-97	CORRECT DIMENSIONS
10-99	REVISION TO GENERAL NOTES

\$\$\$DATE\$\$\$

DGN-ONLY