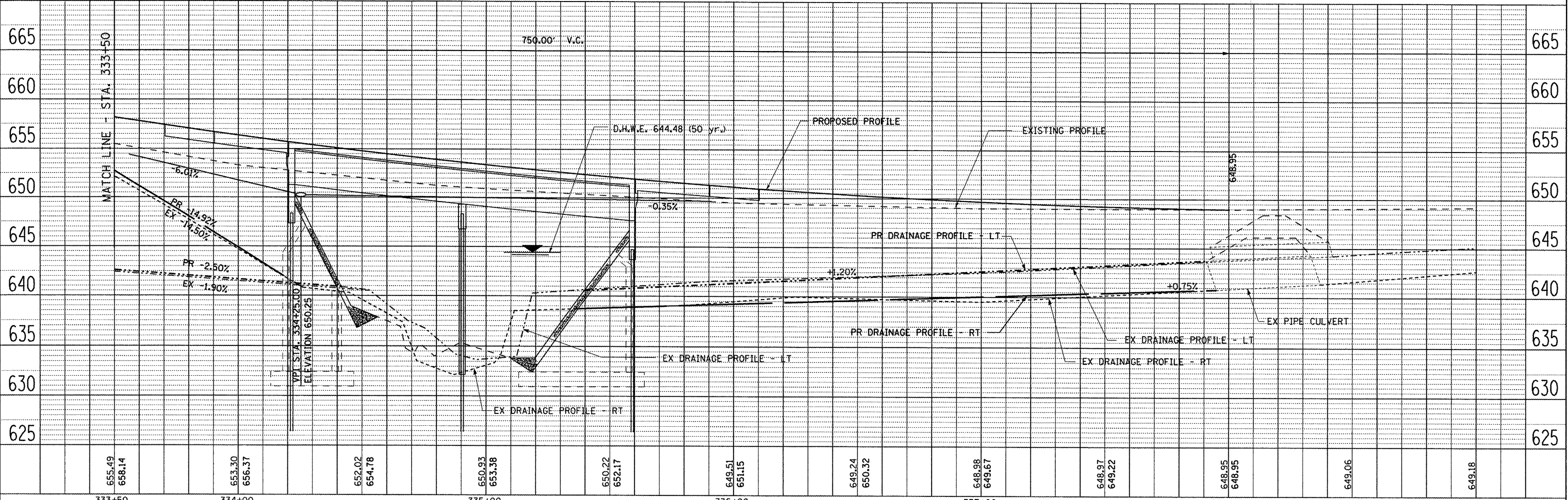
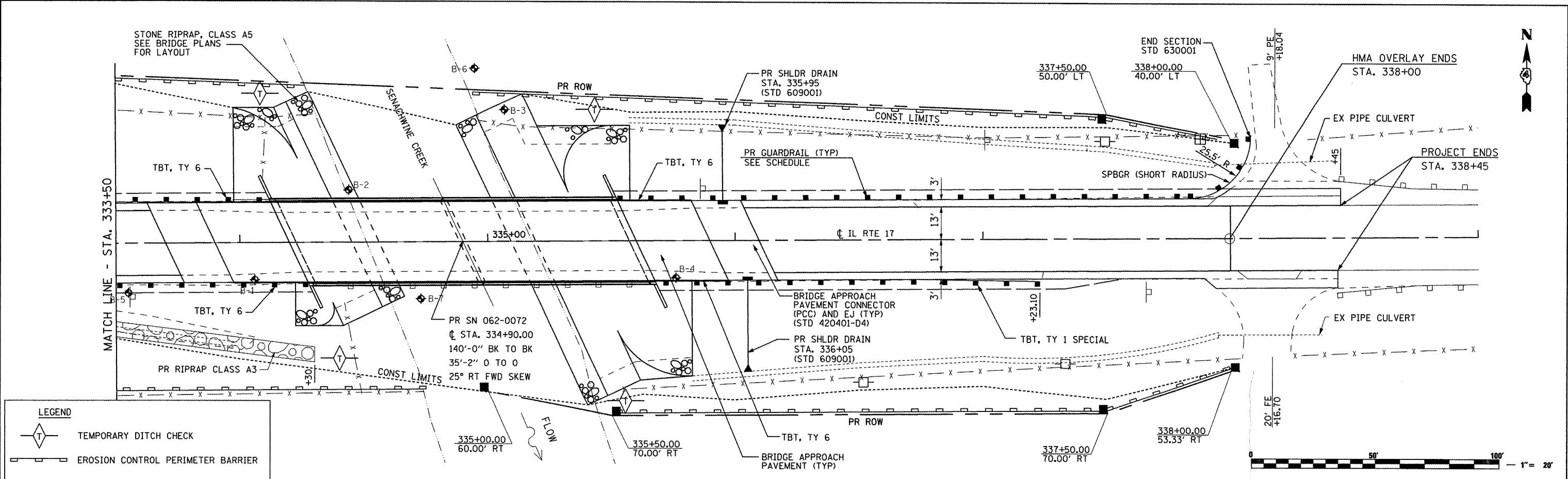


PLAN	SURVEYED	BY	DATE
	ALIGNED		
	CHECKED		
	NO. OF WAY CHECKED		
	CADD FILE NAME		
	NO.		

PROFILE	SURVEYED	BY	DATE
	GRADES CHECKED		
	S.M. NOTED		
	STRUCTURE NOTATING CHKD		
	NO.		



FILE NAME = ...CAD\roadway\PlanProf\_2.sht  
**THE UPCHURCH GROUP, INC.**

USER NAME = .USER.  
 PLOT SCALE = #SCALE#  
 PLOT DATE = 7/31/2008 12:32:17 PM

DESIGNED -	REVISED -
DRAWN -	REVISED -
CHECKED -	REVISED -
DATE -	REVISED -

**STATE OF ILLINOIS  
 DEPARTMENT OF TRANSPORTATION**

**PLAN AND PROFILE - PROPOSED GRADE CHANGE  
 ILLINOIS ROUTE 17 OVER SENACHWINE CREEK**

SCALE: SHEET NO. OF SHEETS STA. 333+50 TO STA. 339+00

F.A.P. RTE.	SECTION	COUNTY	TOTAL SHEETS	SHEET NO.
645	(105BR)BR	Marshall	71	14
CONTRACT NO. 68479				
FED. ROAD DIST. NO. 4 ILLINOIS FED. AID PROJECT				