

GENERAL NOTES

Reinforcement bars designated (E) shall be epoxy coated.

Plan dimensions and details relative to existing plans are subject to routine variations. The Contractor shall field verify existing dimensions and details affecting new construction and make necessary approved adjustments prior to construction or ordering of materials. Such variations shall not be cause for additional compensation for a change in scope of the work, however, the Contractor will be paid for the quantity actually furnished based upon the unit price bid for the work.

Layout of slope protection system may be varied in the field to suit ground conditions as directed by the Engineer.

Reinforcement bars shall conform to the requirements of ASTM A 706 Gr 60 (IL Modified). See Special Provisions

The Contractor shall drive test piles to 110% of the nominal required bearing specified in production locations at substructures specified or approved by the Engineer before ordering the remainder of piles.

The Contractor is advised that the existing PPC Deck Beams are in a deteriorated condition with reduced load carrying capacity. It is the Contractor's responsibility to account for the condition of the beams when developing construction procedures for removal and replacement of the superstructure.

If the Contractor's procedure for existing beam removal or placement of new beams involves placement of heavy equipment on the existing beams, a detailed procedure shall be submitted to the Engineer for approval. The procedure shall include calculations, sealed by an Illinois Licensed Structural Engineer, verifying the structural adequacy of the beams for the proposed loads. Cost included with Removal of Existing Structures.

The steel beam shown in the optional parapet slipforming details on sheet 10A is conceptual only. All appropriate details for the overhang and concrete parapet on sheet 10A shall be applied to the details for the concrete beams on the subject contract if the Contractor elects to utilize the slipforming option.

STATE OF ILLINOIS
DEPARTMENT OF TRANSPORTATION

TOTAL BILL OF MATERIAL

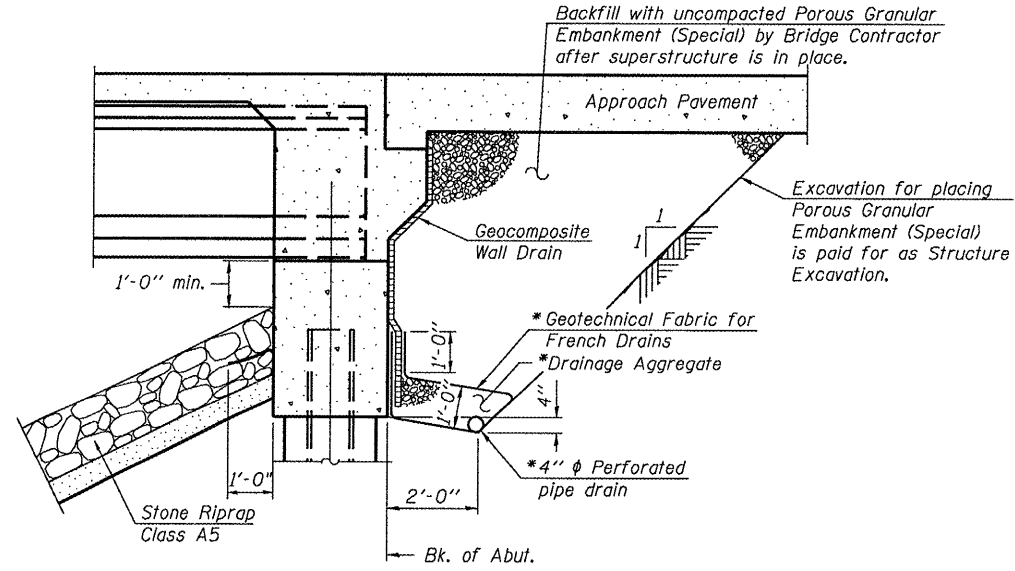
| ITEM | UNIT | SUPER | SUB | TOTAL |
|---|---------|--------|--------|--------|
| Removal of Existing Structures | Each | | | 1 |
| Porous Granular Embankment (Special) | Cu. Yd. | | 165 | 165 |
| Structure Excavation | Cu. Yd. | | 268 | 268 |
| Pipe Underdrains for Structures, 4" | Foot | | 162 | 162 |
| Geocomposite Wall Drain | Sq. Yd. | | 84 | 84 |
| Stone Riprap, Class A5 | Sq. Yd. | | 1,134 | 1,134 |
| Filter Fabric | Sq. Yd. | | 1,134 | 1,134 |
| Concrete Superstructure | Cu. Yd. | 201.3 | | 201.3 |
| Concrete Structures | Cu. Yd. | | 62.8 | 62.8 |
| Protective Coat | Sq. Yd. | 618 | | 618 |
| Concrete Encasement | Cu. Yd. | | 4.2 | 4.2 |
| Furnishing and Erecting Precast Prestressed Concrete I Beams, 42" | Foot | 826.5 | | 826.5 |
| Drilled Shaft in Rock | Cu. Yd. | | 20.6 | 20.6 |
| Reinforcement Bars, Epoxy Coated | Pound | 44,230 | 13,310 | 57,540 |
| Reinforcement Bars | Pound | | 6,480 | 6,480 |
| Temporary Soil Retention System | Sq. Ft. | | 824 | 824 |
| Name Plates | Each | 1 | | 1 |
| Bridge Deck Grooving | Sq. Yd. | 466 | | 466 |
| Bar Splicers | Each | 470 | 28 | 498 |
| Furnishing Steel Piles HP12x53 | Foot | | 242 | 242 |
| Driving Piles | Foot | | 242 | 242 |
| Test Pile Steel HP12x53 | Each | | 1 | 1 |
| Asbestos Bearing Pad Removal | Each | 24 | | 24 |
| Mechanical Splice | Each | | 40 | 40 |
| Permanent Casing | Foot | | 15.5 | 15.5 |

INDEX OF SHEETS

- General Plan and Elevation
- General Data
- Stage Construction Details
- Temporary Concrete Barrier
- 5-6. Top of Slab Elevations
- Top of West Approach Pavement Elevations
- Top of East Approach Pavement Elevations
- Superstructure
- Superstructure Details
- 10A. Concrete Parapet Slipforming Option
- 11-12. Diaphragm Details
- Framing Plan
- 42" PPC I-Beam
- 42" PPC I-Beam Details
- West Abutment
- East Abutment
- Pier
- Bar Splicer Assembly Details
- Pile Details
- 21-23. Soil Boring Logs

| | | | | |
|-----------------------|---------|----------|-------|------------------|
| ROUTE NO. | SECTION | COUNTY | SHEET | SHEET NO. |
| F.A.P. 645 | * | Marshall | 71 19 | 23 SHEETS |
| FED. ROAD DIST. NO. 4 | | ILLINOIS | | FED. AID PROJECT |

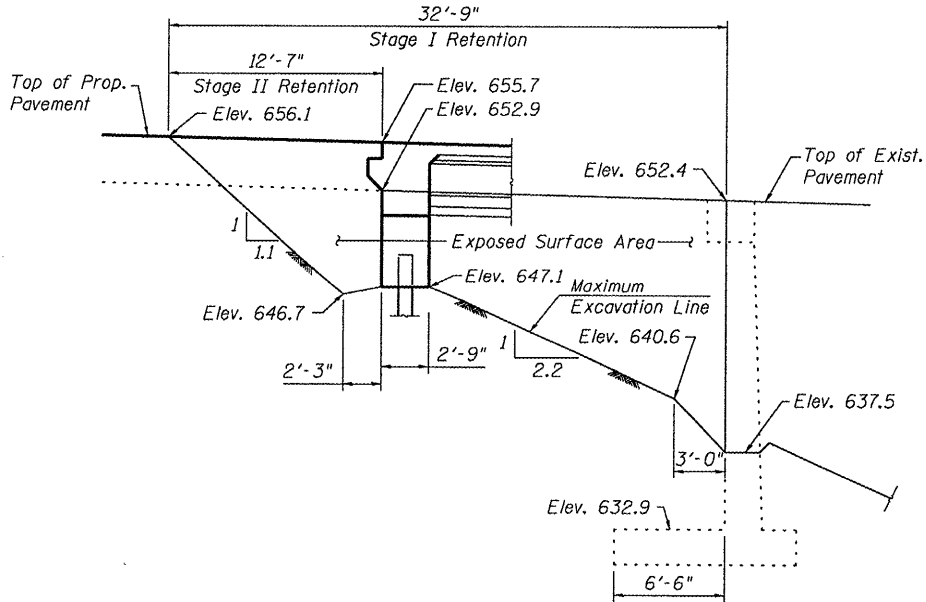
*(105BR)BR
Contract - 68479



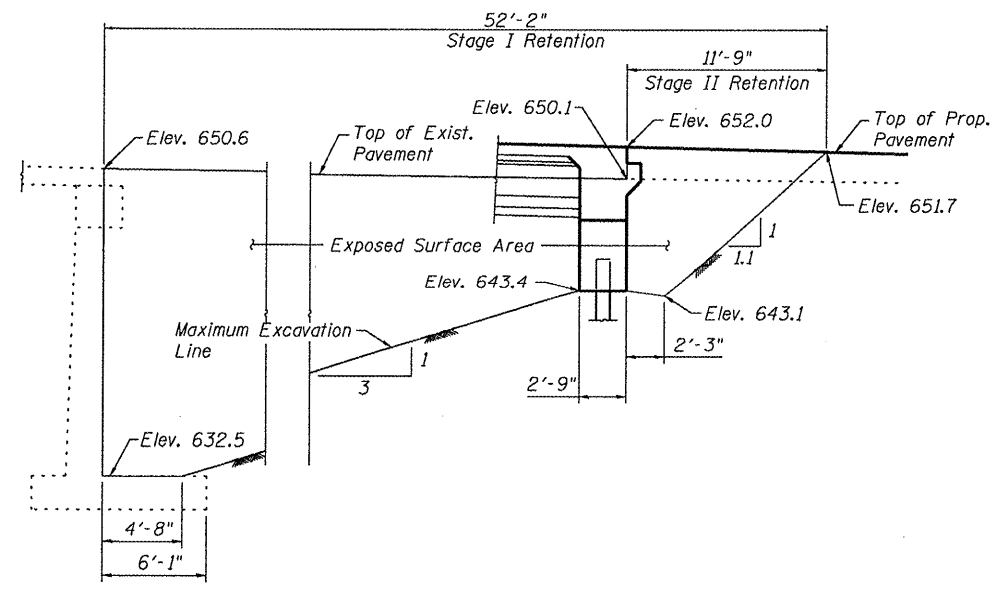
SECTION THRU INTEGRAL ABUTMENT
(Horiz. dim. @ Rt. L's)

* Included in the cost of Pipe Underdrains for Structures.

Note:
All drainage system components shall extend to 2'-0" from the end of each wingwall except an outlet pipe shall extend until intersecting with the side slopes. The pipes shall drain into concrete headwalls. (See Article 601.05 of the Standard Specifications and Highway Standard 601101).



TEMPORARY SOIL RETENTION SYSTEM - W. ABUT.
(Looking North)



TEMPORARY SOIL RETENTION SYSTEM - E. ABUT.
(Looking North)

A cantilevered sheet piling design does not appear feasible and additional members or other retention systems may be necessary. The Contractor shall submit a temporary soil retention system design including plan details and calculations for review and acceptance by the Engineer.
All horizontal dimensions are given along centerline of roadway.

GENERAL DATA
IL ROUTE 17 OVER SENACHWINE CREEK
FAP ROUTE 645 - SECTION (105BR)BR
MARSHALL COUNTY
STATION 334+90.00
STRUCTURE NO. 062-0072

Operator: dneberling Date: 8/26/2008 Filename: L:\Jobs\DOT BBS\69566 BBS Various\Various\03\CADD_Struc\062-0072 4-18-08.dgn

| | |
|-------------------|---|
| DESIGNED CEH | <p>ENGINEERS PLANNERS LAND SURVEYORS</p> <p>MASON CITY, IOWA DUBUQUE, IOWA AMES, IOWA E. DUBUQUE, ILLINOIS SPRINGFIELD, ILLINOIS ROCHESTER, MINNESOTA</p> |
| CHECKED CWC | |
| DRAWN DLH | |
| CHECKED CEH / CWC | |