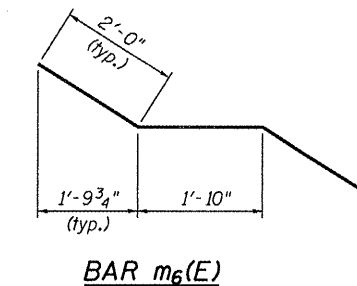
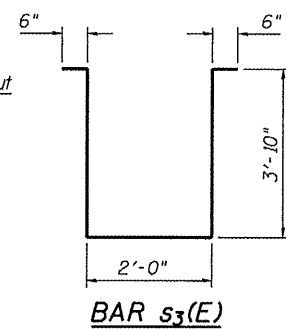
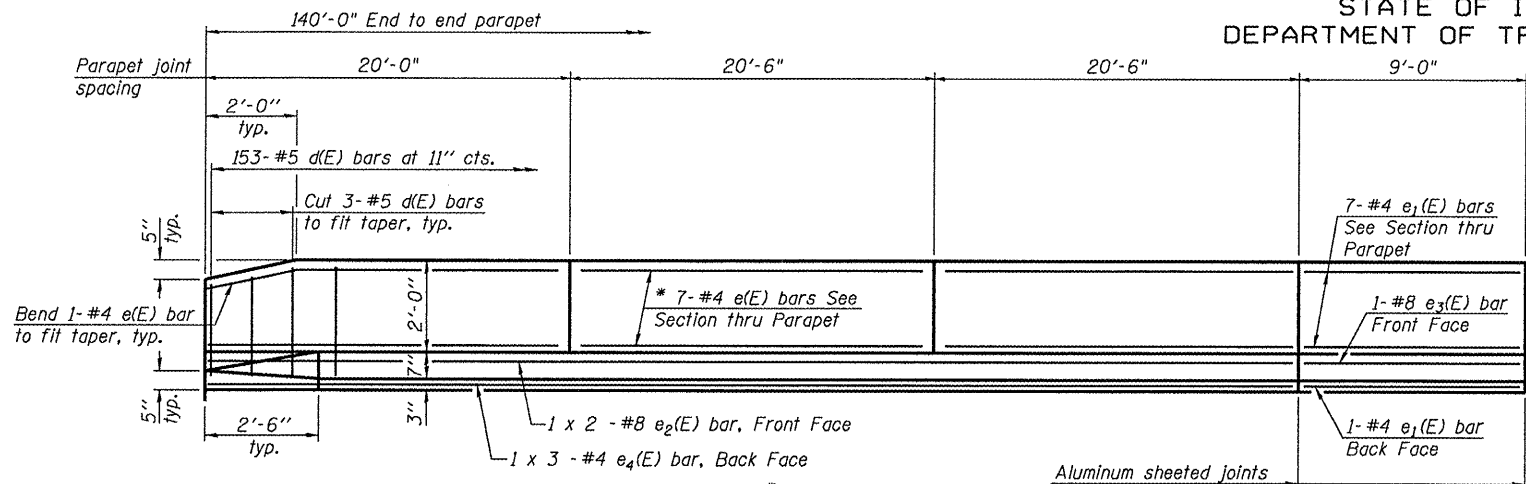


STATE OF ILLINOIS
DEPARTMENT OF TRANSPORTATION

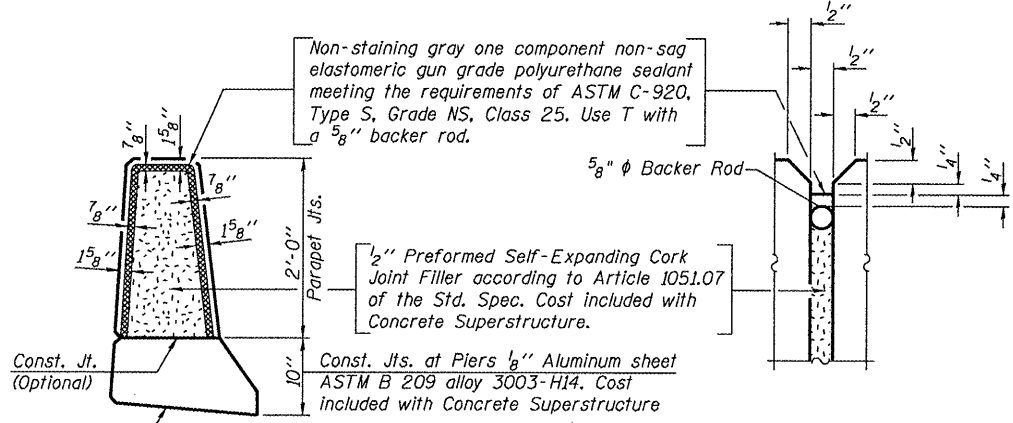
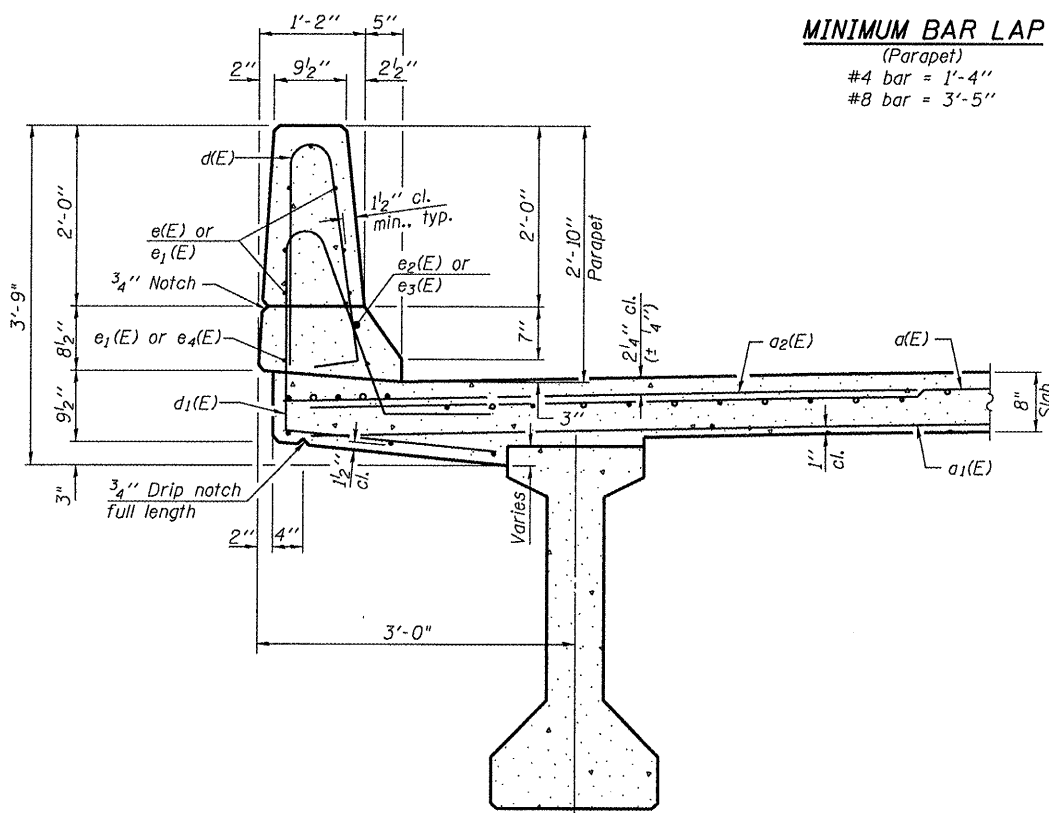
ROUTE NO.	SECTION	COUNTY	SHEET NO.	TOTAL SHEETS
F.A.P. 645	*	Marshall	71	27
FED. ROAD DIST. NO. 4		ILLINOIS	FED. ROAD PROJECT	

SHEET NO. 10
23 SHEETS

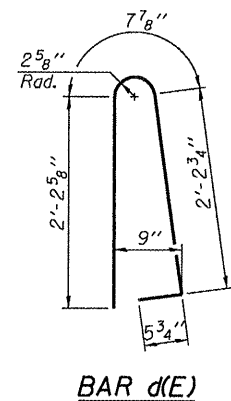


INSIDE ELEVATION OF PARAPET

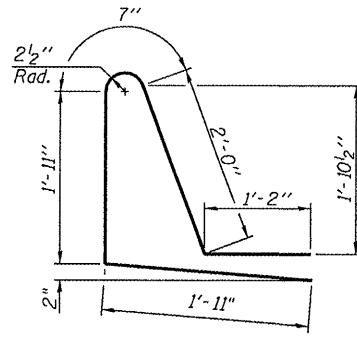
MINIMUM BAR LAP
(Parapet)
#4 bar = 1'-4"
#8 bar = 3'-5"



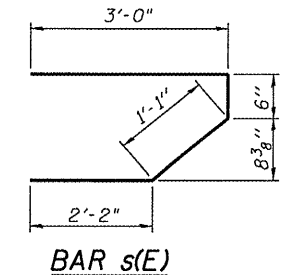
PARAPET JOINT DETAILS



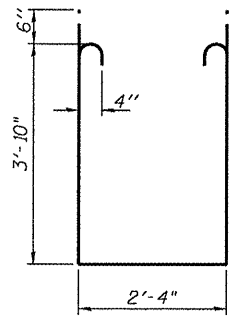
BAR d(E)



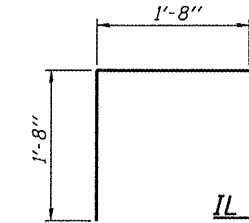
BAR d1(E)



BAR s(E)



BAR s1(E)



BAR v(E)

**SUPERSTRUCTURE
BILL OF MATERIAL**

Bar	No.	Size	Length	Shape
d(E)	422	#5	17'-1"	—
a1(E)	338	#5	16'-9"	—
a2(E)	422	#6	6'-6"	—
a3(E)	8	#7	18'-9"	—
b(E)	190	#5	29'-9"	—
b1(E)	66	#7	36'-0"	—
b2(E)	252	#5	25'-3"	—
d(E)	306	#5	5'-7"	—
d1(E)	306	#5	7'-7"	—
e(E)	84	#4	20'-2"	—
e1(E)	32	#4	8'-8"	—
e2(E)	8	#8	32'-3"	—
e3(E)	4	#8	8'-8"	—
e4(E)	12	#4	21'-3"	—
m(E)	8	#6	18'-0"	—
m1(E)	12	#6	19'-0"	—
m2(E)	24	#6	8'-4"	—
m3(E)	16	#6	4'-1"	—
m4(E)	12	#6	1'-11"	—
m5(E)	16	#6	5'-6"	—
m6(E)	6	#8	5'-10"	—
m7(E)	8	#6	2'-7"	—
s(E)	72	#5	6'-9"	—
s1(E)	52	#4	11'-0"	—
s3(E)	20	#4	10'-8"	—
v(E)	68	#5	3'-4"	—
Reinforcement Bars, Epoxy Coated			Lbs.	44,230
Concrete Superstructure			Cu. Yds.	201.3

Bars indicated thus 1 x 2-#5 etc. indicates 1 line of bars with 2 lengths per line.
Work this sheet with sheets 9, 11, and 12 of 23.

SUPERSTRUCTURE DETAILS
IL ROUTE 17 OVER SENACHWINE CREEK
FAP ROUTE 645 - SECTION (105BR)BR
MARSHALL COUNTY
STATION 334+90.00
STRUCTURE NO. 062-0072

DESIGNED	CEH
CHECKED	CWC
DRAWN	DLH
CHECKED	CEH / CWC

WHKS & CO.
ENGINEERS PLANNERS LAND SURVEYORS
MASON CITY, IOWA DUBUQUE, IOWA ANES, IOWA
E. DUBUQUE, ILLINOIS SPRINGFIELD, ILLINOIS ROCHESTER, MINNESOTA

Operator: dheberling Date: 8/28/2008 Filename: L:\Jobs\IDOT BBS\69566 BBS Various\03\CADD_Struct\062-0072 4-18-08.dgn