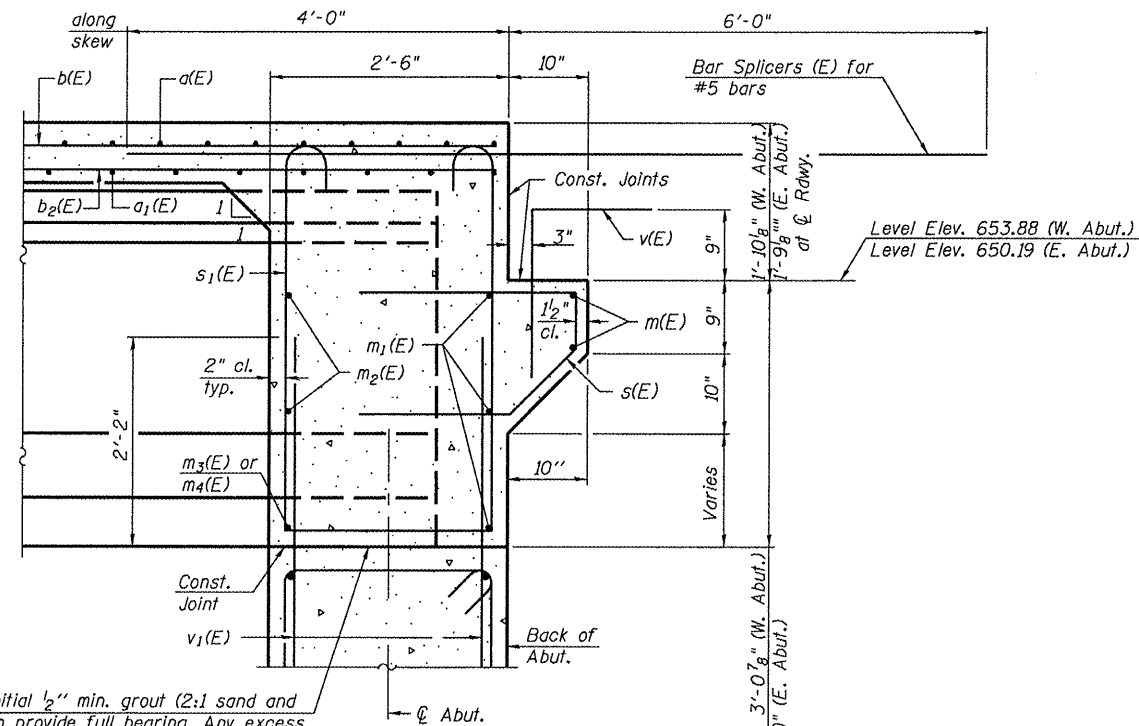


STATE OF ILLINOIS
DEPARTMENT OF TRANSPORTATION

ROUTE NO.	SECTION	COUNTY	SHEET NO.	TOTAL SHEETS
F.A.P. 645	*	Marshall	71	30
FED. ROAD DIST. NO. 4		ILLINOIS FED. AID PROJECT		

SHEET NO. 12
23 SHEETS

*(105BR)BR
Contract - 68479

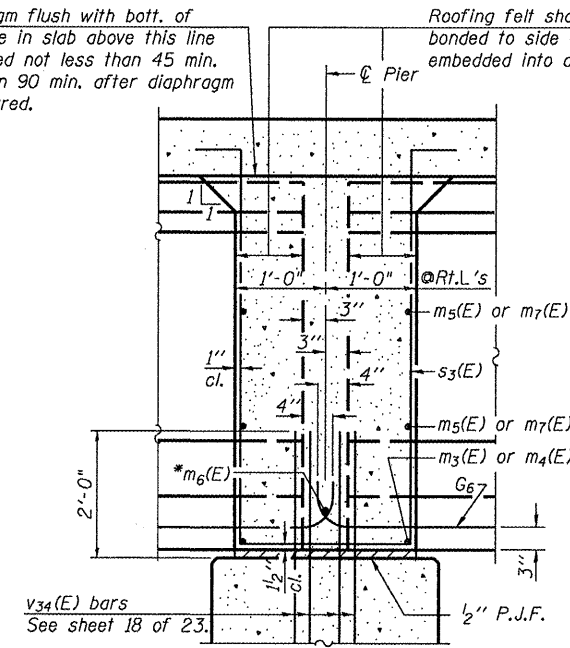


SECTION A-A
Dimensions at right angles to abutment, except as shown.

Beam ends shall be set on an initial 1/2" min. grout (2:1 sand and portland cement, very dry mix) to provide full bearing. Any excess grout squeezed out from under the beam shall be removed. Cost included with Concrete Structures.

Pour diaphragm flush with bott. of slab. Concrete in slab above this line shall be placed not less than 45 min. nor more than 90 min. after diaphragm has been poured.

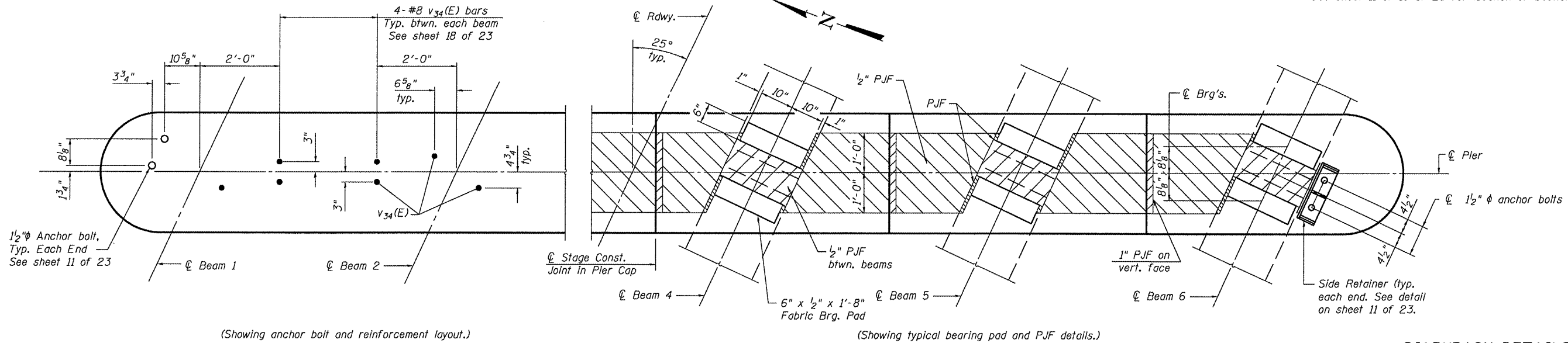
Roofing felt shall be bonded to side of beam embedded into diaphragm.



SECTION B-B
Dimensions along centerline of beam, except as shown.

* Tightly fasten the #8 bars together with No. 9 wire ties.

Note:
See sheet 11 or 13 of 23 for location of Sections A-A and B-B.



PARTIAL PLAN AT PIER

DIAPHRAGM DETAILS
IL ROUTE 17 OVER SENACHWINE CREEK
FAP ROUTE 645 - SECTION (105BR)BR
MARSHALL COUNTY
STATION 334+90.00
STRUCTURE NO. 062-0072

Operator: dtheberling

Date: 8/26/2008

Filename: L:\Jobs\IDOT\BBS\6966 BBS Various\Various\03\CADD_Struct\062-0072_4-18-08.dgn

DESIGNED	CEH
CHECKED	CWC
DRAWN	DLH
CHECKED	CEH / CWC

WHKS & CO.	
ENGINEERS PLANNERS LAND SURVEYORS	
MASON CITY, IOWA DUBUQUE, IOWA AMES, IOWA	
E. DUBUQUE, ILLINOIS SPRINGFIELD, ILLINOIS ROCHESTER, MINNESOTA	