

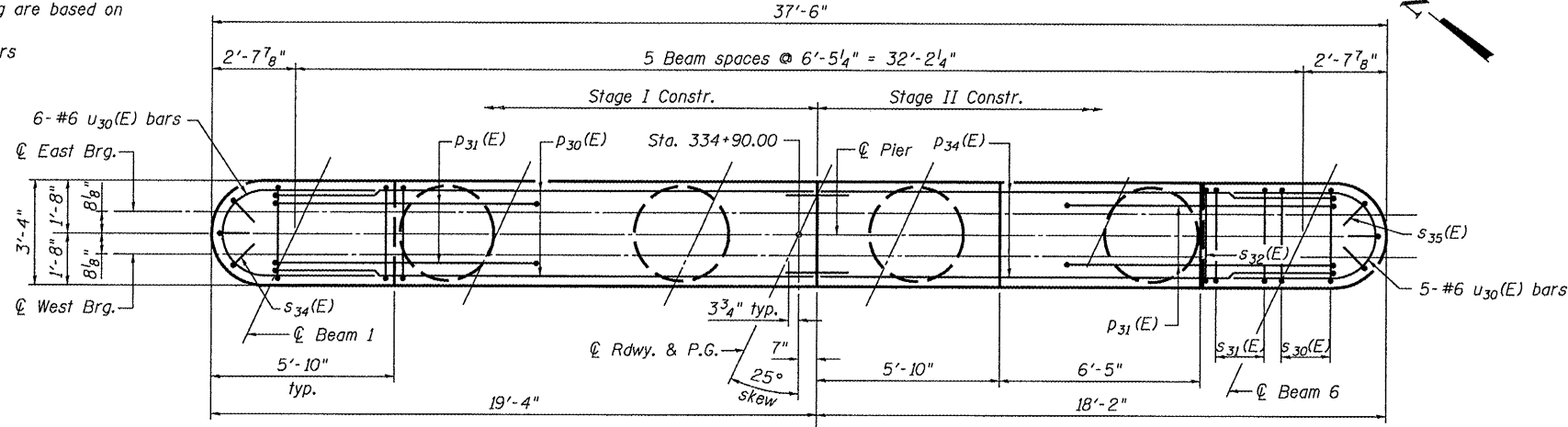
STATE OF ILLINOIS
DEPARTMENT OF TRANSPORTATION

MIN. BAR LAP
#6 s₃₁(E) & s₃₂(E) = 1'-10"

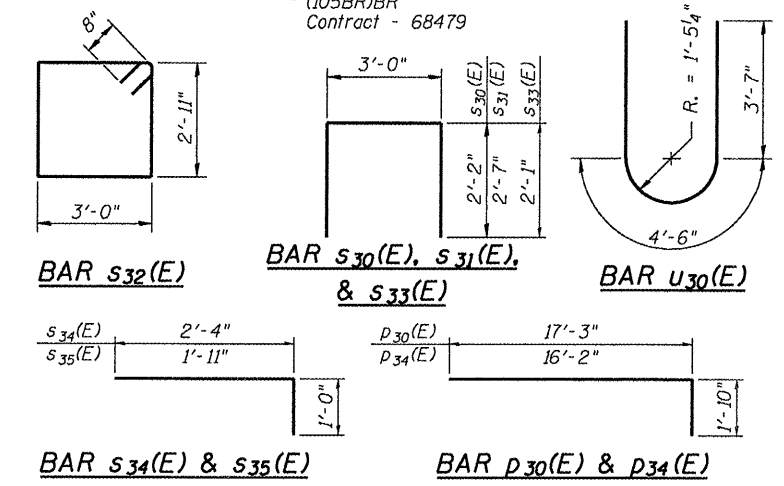
ROUTE NO.	SECTION	COUNTY	TOTAL SHEETS	SHEET NO.	SHEET NO.
F.A.P. 645		Marshall	71	36	23 SHEETS
FED. ROAD DIST. NO. 4		ILLINOIS	FED. AID PROJECT		

Contract - 68479

*** Contractor is responsible for determining the casing thickness and the actual tip elevation to be used. See Article 516.06(d) of the Standard Specifications.
Pay limits for the Permanent Casing are based on the minimum length shown.
Hooks for the v₃₂(E) and v₃₃(E) bars may be rotated outward to facilitate placement and consolidation of concrete. A min. 2" clear cover shall be maintained between the hooks and the face of the pier cap.
Excavation through soil to construct the drilled shafts shall be included in the cost of Drilled Shaft in Rock.



PLAN



BILL OF MATERIAL

Bar	No.	Size	Length	Shape
h ₃₀ (E)	3	#4	17'-3"	—
D ₃₀ (E)	4	#10	19'-1"	—
D ₃₁ (E)	6	#10	12'-4"	—
D ₃₂ (E)	4	#6	17'-3"	—
D ₃₃ (E)	4	#10	17'-7"	—
D ₃₄ (E)	4	#10	18'-0"	—
D ₃₅ (E)	4	#6	16'-2"	—
D ₃₆ (E)	4	#10	16'-5"	—
s ₃₀ (E)	20	#6	7'-4"	U
s ₃₁ (E)	16	#6	8'-2"	U
s ₃₂ (E)	52	#6	13'-2"	U
s ₃₃ (E)	15	#4	7'-2"	U
s ₃₄ (E)	6	#6	3'-4"	—
s ₃₅ (E)	6	#6	2'-11"	—
sp	4	#6	17'-9"	W
sp ₁ (E)	4	#6	8'-5"	W
U ₃₀ (E)	11	#6	11'-8"	U
v ₃₀	20	#11	19'-3"	—
v ₃₁	20	#11	21'-3"	—
v ₃₂ (E)	20	#11	11'-3"	—
v ₃₃ (E)	20	#11	9'-3"	—
v ₃₄ (E)	30	#8	4'-2"	—
Concrete Structures	Cu. Yd.	24.3		
Reinforcement Bars, Epoxy Coated	Pound	7,180		
Reinforcement Bars	Pounds	6,480		
Drilled Shaft in Rock	Cu. Yd.	20.6		
Mechanical Splice	Each	40		
Permanent Casing	Foot	15.5		

Cast steps monolithically with cap. Space cap reinforcement to miss anchor bolts. See Sht. 12 of 23 for anchor bolt layout. Minimum lap for spirals = 3'-0"
** Length is height of spiral. For details of Bar Splicers, see sheet 19 of 23.

PIER DETAILS

IL ROUTE 17 OVER SENACHWINE CREEK
FAP ROUTE 645 - SECTION (105BR)BR
MARSHALL COUNTY
STATION 334+90.00
STRUCTURE NO. 062-0072

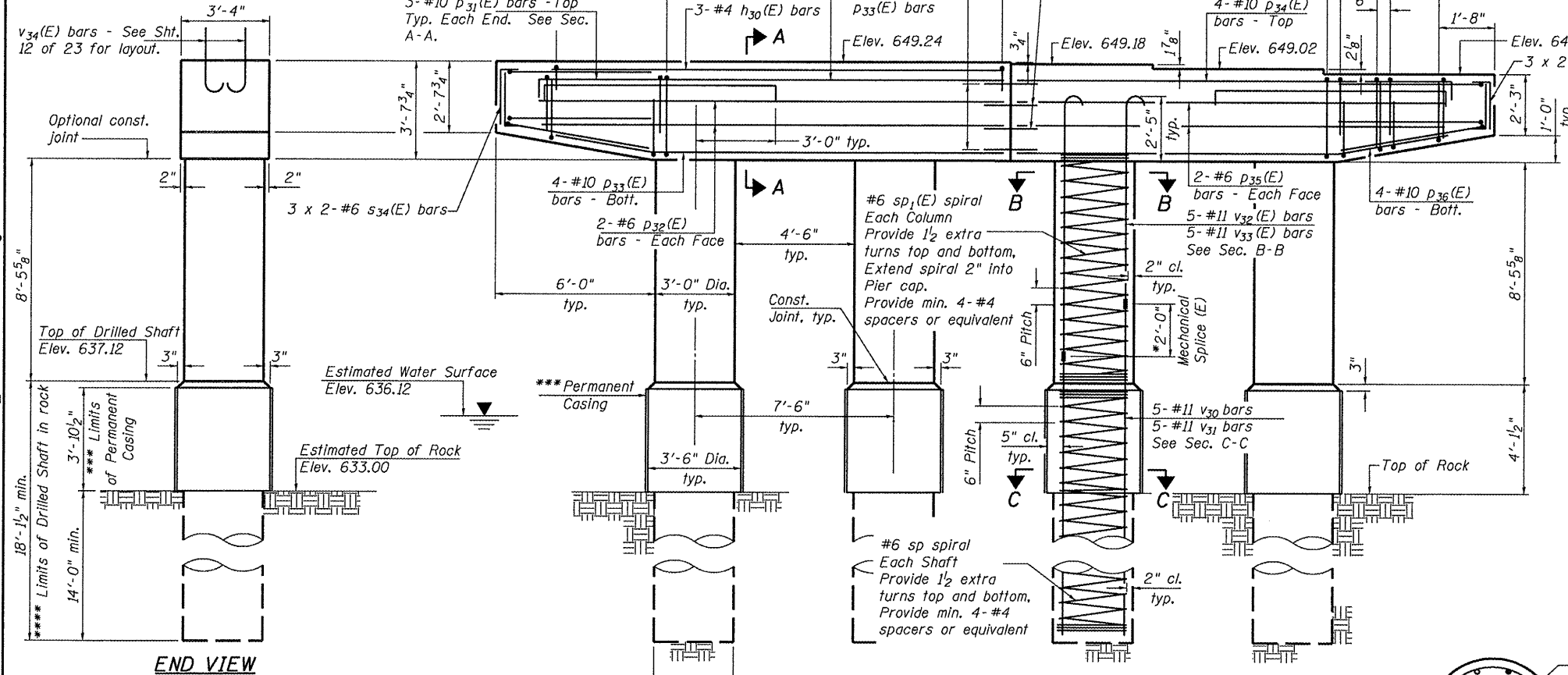
Operator: dshearing Date: 8/26/2008 File name: L:\Jobs\IDOT\BBS\6956 BBS Various\Various\6956.03\CADD_Struct\062-0072_4-18-08.dgn

DESIGNED	CEH
CHECKED	CWC
DRAWN	DLH
CHECKED	CEH / CWC

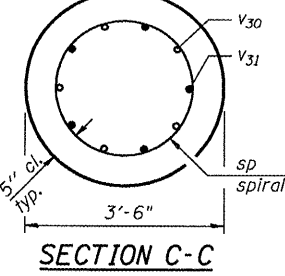
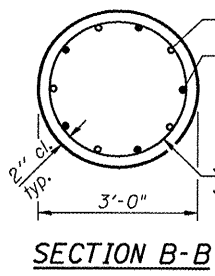
WHKS & CO.
ENGINEERS PLANNERS LAND SURVEYORS
NATION CITY, IOWA DUBUQUE, IOWA AMES, IOWA
E. DUBUQUE, ILLINOIS SPRINGFIELD, ILLINOIS ROCHESTER, MINNESOTA

**** If the prevailing water surface elevation during construction is consistently different than estimated on the plans, the contractor may propose an adjustment to the top of the drilled shaft elevation as part of their installation procedure. The top of all drilled shafts within a substructure unit shall be constructed to the same elevation and extend above the prevailing water surface. The quantities and reinforcement detailing are based on the top of shaft and the estimated elevations shown and may change based on the actual elevations encountered at each shaft and the final top of shaft elevation.

ELEVATION
(Looking East)



END VIEW



SECTION A-A