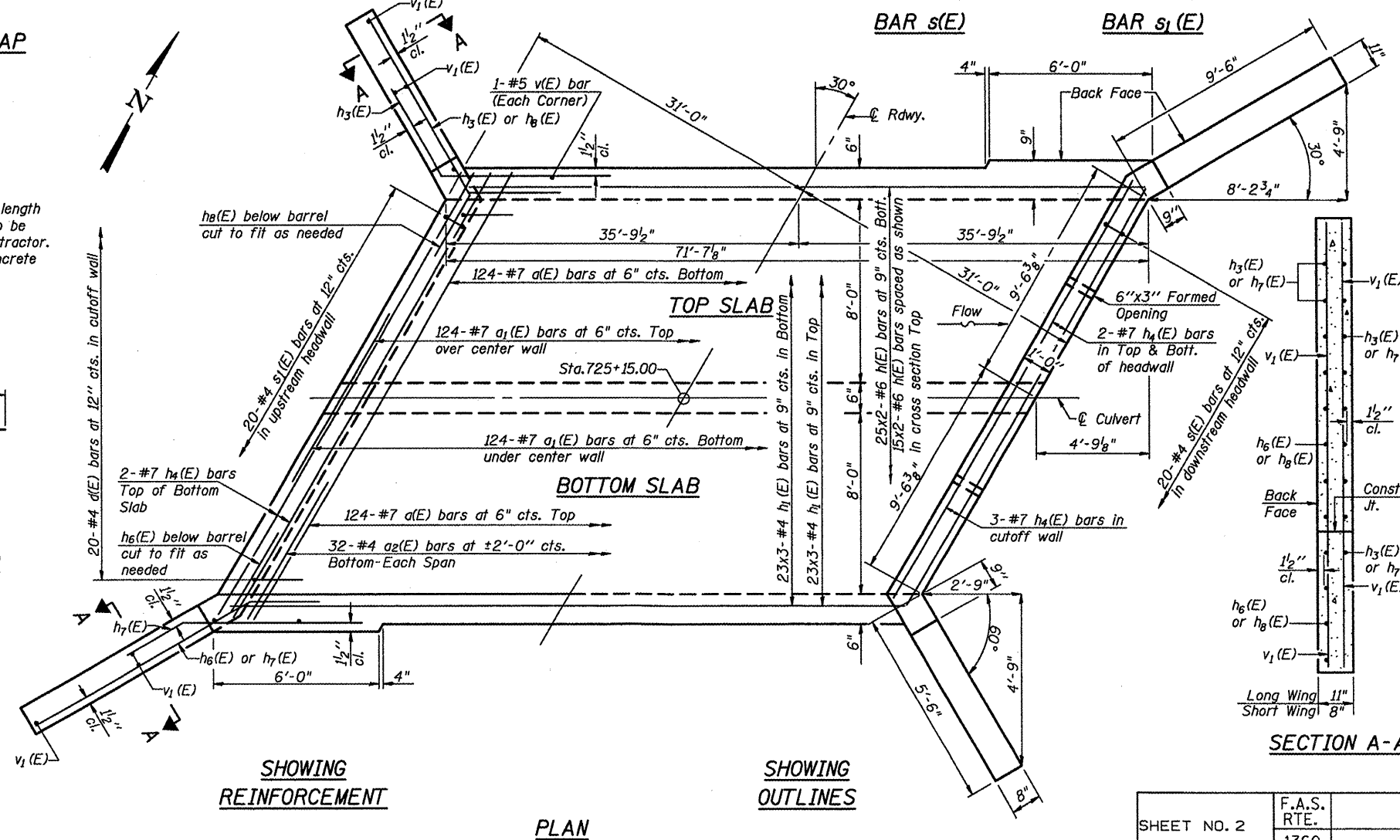
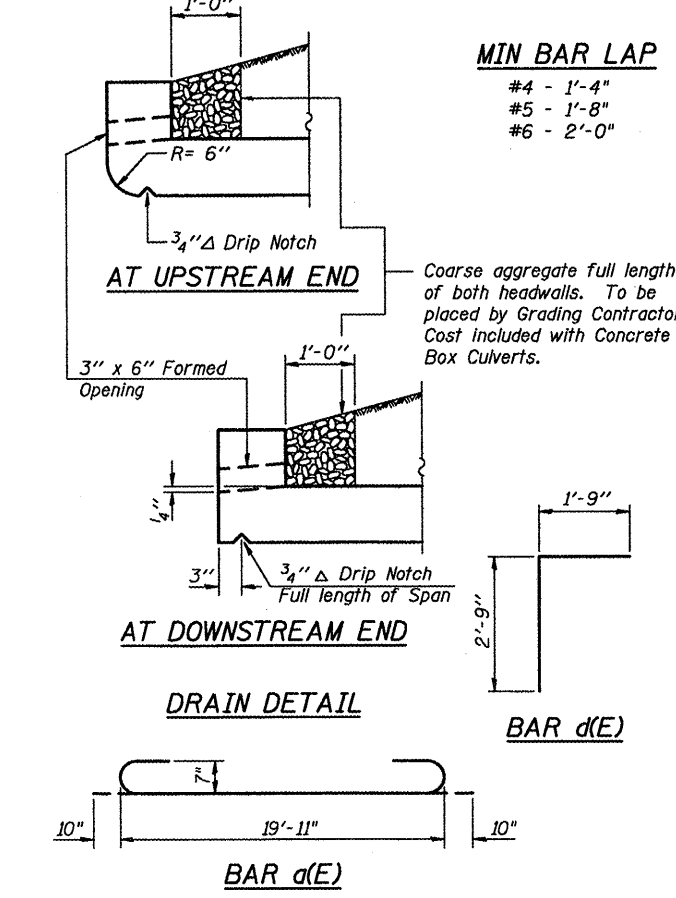
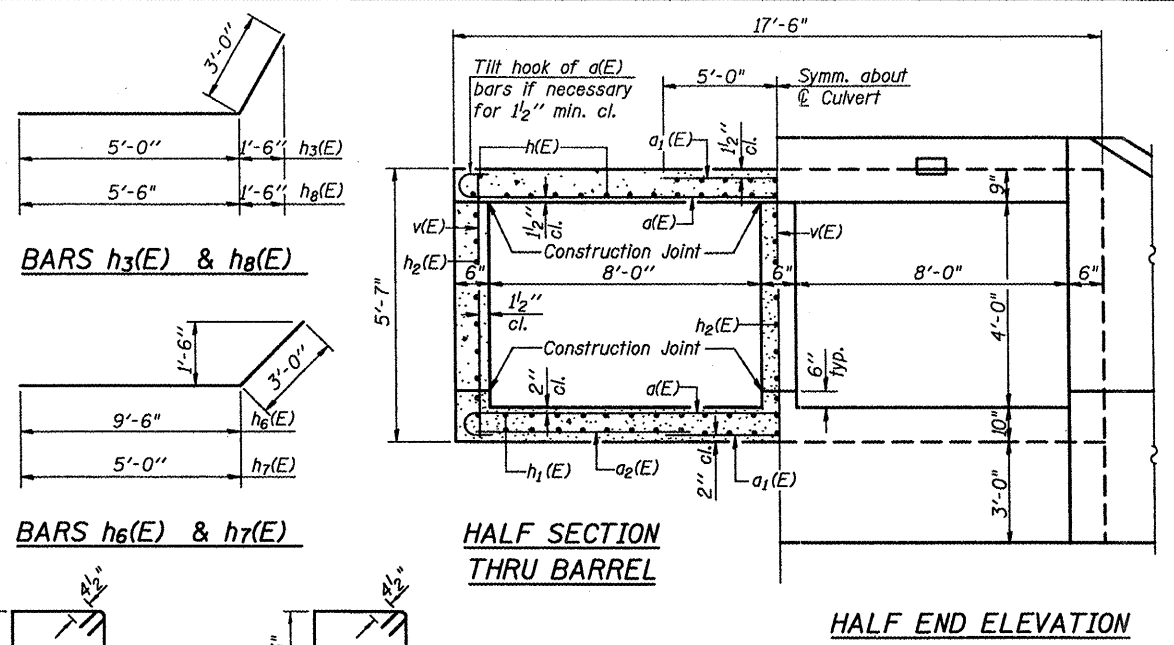
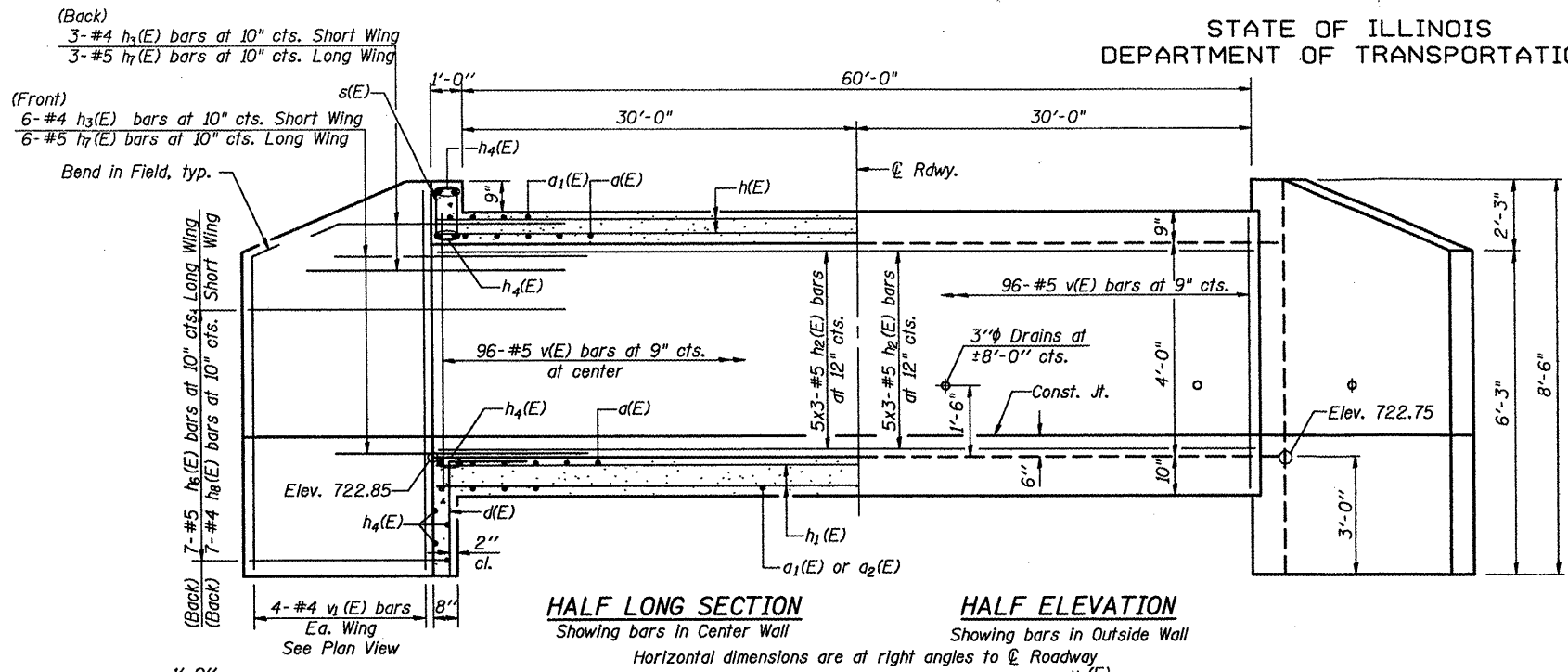


STATE OF ILLINOIS
DEPARTMENT OF TRANSPORTATION



Notes: Bars indicated thus 12x4-#5 etc. indicates 12 lines of bars with 4 lengths per line.

BILL OF MATERIAL

Bar	No.	Size	Length	Shape	
a(E)	248	#7	21'-7"	U	
a1(E)	248	#7	10'-0"	U	
a2(E)	64	#4	6'-6"	U	
d(E)	40	#4	4'-6"	U	
h(E)	80	#6	36'-9"	U	
h1(E)	138	#4	24'-9"	U	
h2(E)	45	#5	25'-0"	U	
h3(E)	18	#4	8'-0"	U	
h4(E)	18	#7	19'-11"	U	
h5(E)	14	#5	12'-6"	U	
h7(E)	18	#5	8'-0"	U	
h8(E)	14	#4	8'-6"	U	
s(E)	20	#4	4'-9"	U	
s1(E)	20	#4	4'-7"	U	
v(E)	292	#5	5'-3"	U	
v1(E)	16	#4	8'-2"	U	
Concrete Box Culverts				Cu. Yd.	100.2
Reinforcement Bars, Epoxy Coated				Pound	27,340

CULVERT DETAILS
IL ROUTE 251 OVER
UNNAMED DRAINAGE DITCH
STATION 725+15.00

SHEET NO. 2	F.A.S. RTE.	SECTION	COUNTY	TOTAL SHEETS	SHEET NO.
	1360	631	WOODFORD	31	16
2 SHEETS	SN 102-2028		CONTRACT NO. 68574		
	FED. ROAD DIST. NO.	ILLINOIS	FED. AID PROJECT		

DESIGNED	JH
CHECKED	LGP
DRAWN	JM
CHECKED	LGP

HDR
HDR ENGINEERING, INC.
8550 W. BRYN MAWR AVE.
CHICAGO, IL 60631

All reinforcement spacings are at right angles to the bars.