

PROJECT ENGINEER: MAUREEN ADDIS (309)-671-3454

LIAISON ENGINEER: ELIAS ELDERZI (309)-671-3459

INDEX OF SHEETS

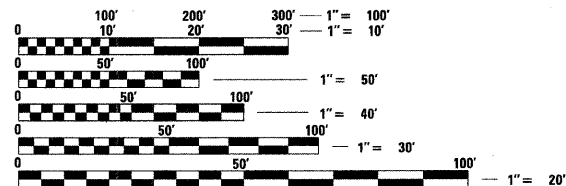
1	COVER SHEET
2	COMMITMENTS, GENERAL NOTES & STATUS OF UTILITIES
3-4	SUMMARY OF QUANTITIES
5	TYPICAL SECTIONS; EXISTING
6	TYPICAL SECTIONS; PROPOSED
7-8	SCHEDULE OF QUANTITIES
9	CONTROL POINTS
10	EXISTING & REMOVAL PLAN
11	PLAN AND PROFILE
12-13	STAGES OF CONSTRUCTION AND TRAFFIC CONTROL
14	EROSION CONTROL PLAN
15	RIGHT-OF-WAY PLAN
16-34	BRIDGE PLANS
35	BUTT JOINT DETAIL
36	TYPICAL ENTRANCE DETAIL
37	GUARDRAIL DETAIL
38	BRIDGE APPROACH PAVEMENT (SPECIAL)
39-53	DISTRICT CADD STANDARDS 205001-D4 440001-D4 780001-D4 281001-D4 630101-D4 406101-D4 635101-D4 406501-D4 667101-D4
54-56	CROSS SECTIONS
56 A-D	EXISTING BRIDGE PLAN (FOR INFORMATION ONLY)

HIGHWAY STANDARDS

000001-05	630301-04	701301-02	780001-01
280001-04	631031-06	701306-01	781001-02
285001-02	635006-02	701311-02	880001
420401-06	635011-01	701321-09	886001
515001-02	666001	701901	B.L.R.-21-7
542301-01	667101	704001-04	
601101			
606001-03	701001-01	720001	
630001-07	701006-02	720011	

DESIGN DESIGNATION

CURRENT ADT = 3750(2009)
 SU = 8.6%
 MU = 3.2%
 MINOR ARTERIAL (NON-URBAN)
 POSTED SPEED = 30 MPH



FULL SIZE PLANS HAVE BEEN PREPARED USING STANDARD ENGINEERING SCALES. REDUCED SIZED PLANS WILL NOT CONFORM TO STANDARD SCALES. IN MAKING MEASUREMENTS ON REDUCED PLANS, THE ABOVE SCALES MAY BE USED.

J.U.L.I.E.
 JOINT UTILITY LOCATION INFORMATION FOR EXCAVATION
 1-800-892-0123

CONTRACT NO. 68576

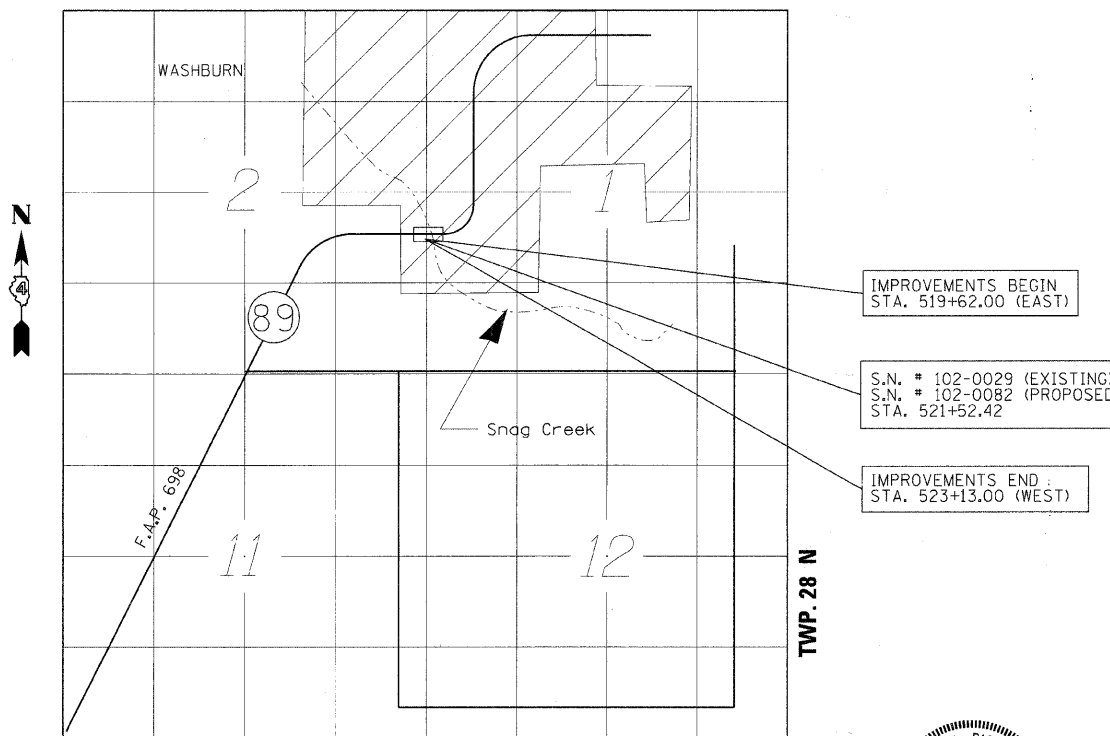
CATALOG NO. 033204-00D

STATE OF ILLINOIS
 DEPARTMENT OF TRANSPORTATION
 DIVISION OF HIGHWAYS

**PROPOSED
 HIGHWAY PLANS**

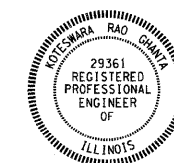
REPLACEMENT OF BRIDGE OVER SNAG CREEK
 FAP ROUTE 698 (IL 89)
 SECTION 126BR
 WOODFORD COUNTY

C-94-050-06
 PROJECT ACBRF-0698(029)
 R.2W. 3RD P.M.



LOCATION MAP

GROSS LENGTH OF SECTION = 351 FEET (0.066 MI)
 NET LENGTH OF SECTION = 351 FEET (0.066 MI)

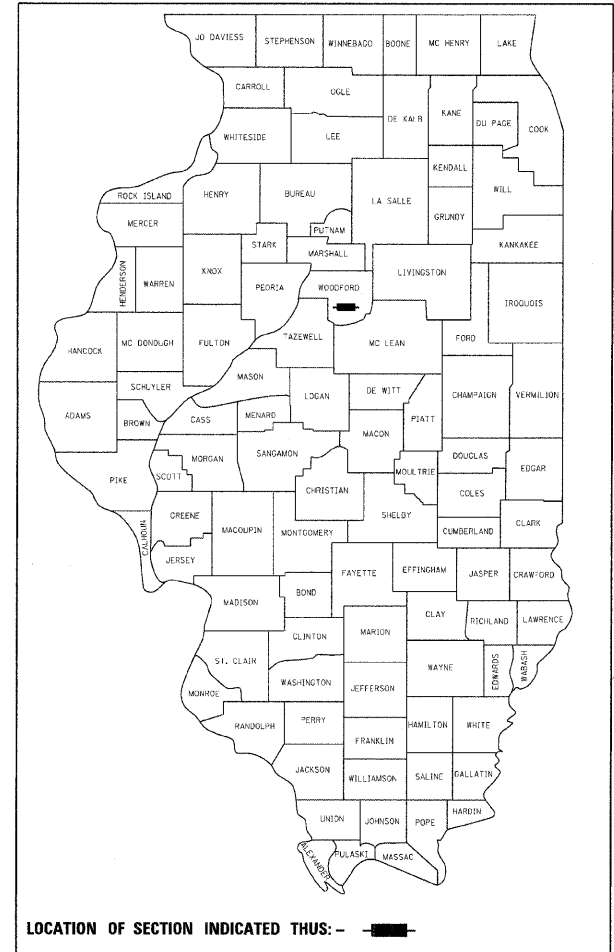


Expires: 11/30/2009

Koteswara Rao Ghanta
 Signed
 7-28-2008
 Dated

F.A.P. RTE.	SECTION	COUNTY	TOTAL SHEETS	SHEET NO.
698	126BR	WOODFORD	56	1
			+ 4	
			60	

D-94-043-06



LOCATION OF SECTION INDICATED THUS: -

STATE OF ILLINOIS
 DEPARTMENT OF TRANSPORTATION
 DIVISION OF HIGHWAYS

SUBMITTED *August 20, 2008*
[Signature]
 DEPUTY DIRECTOR OF HIGHWAYS, REGION ENGINEER
October 3, 2008
Eric E. Harrell
 INTERIM ENGINEER OF DESIGN AND ENVIRONMENT
October 3, 2008
Christine M. Reed
 DIRECTOR OF HIGHWAYS, CHIEF ENGINEER

PRINTED BY THE AUTHORITY
 OF THE STATE OF ILLINOIS

MID-AMERICA ENGINEERING SERVICES