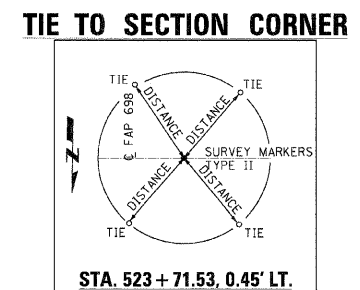
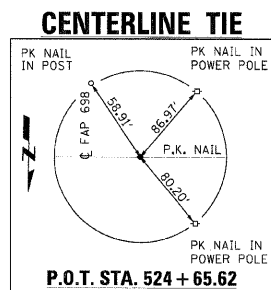
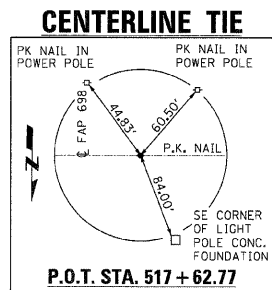


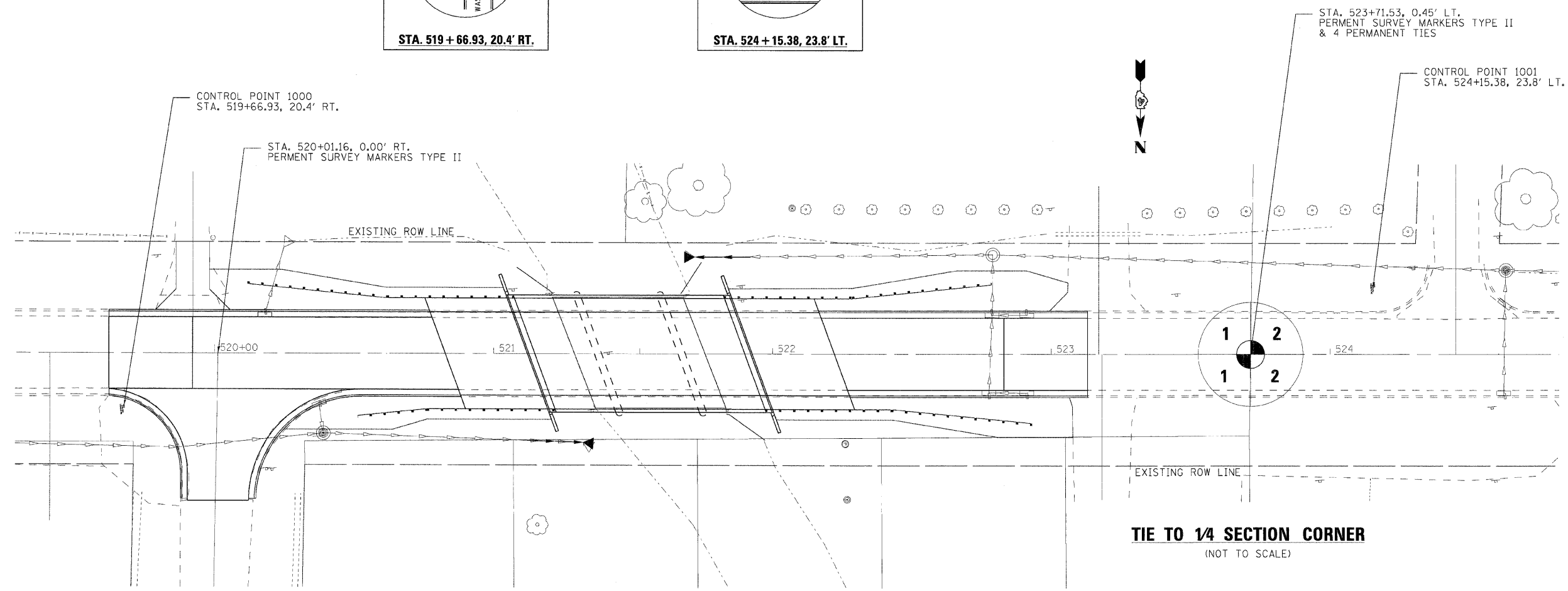
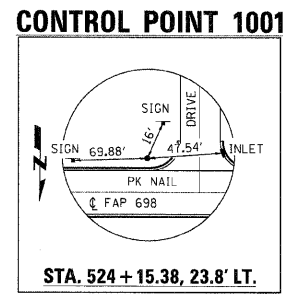
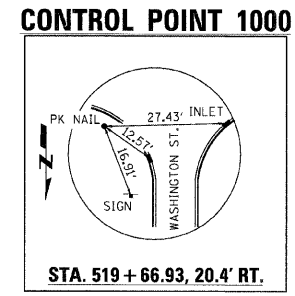
F.A.P. RTE.	SECTION	COUNTY	TOTAL SHEETS	SHEET NO.
698	126BR	WOODFORD	56	9
STA. 519+62.00		TO STA. 523+13.00		
FED. ROAD DIST. NO. 4		ILLINOIS FED. AID PROJECT		



BENCH MARK: (TO BE VERIFIED ON THE FIELD)
BENCH MARKS ARE REFERENCED TO STATIONS ON IL. 89

B.M. #100 ELEV. 676.38'
CHISELED SQUARE ON NE WINGWALL OF SN 102-0029
STA. 521+34.8, 25' RT

B.M. #101 ELEV. 674.44'
R.R. SPIKE IN NORTH SIDE OF LIGHT POLE
STA. 518+05.8, 42' LT



TIE TO 1/4 SECTION CORNER
(NOT TO SCALE)

PLOT DATE = 10/31/07
FILE NAME = 68576-126BR-09
PLOT SCALE = 1"=40'
USER NAME = BUSERS

REVISIONS	
NAME	DATE

ILLINOIS DEPARTMENT OF TRANSPORTATION
CONTROL POINTS
F.A.P. 698
SECTION 126BR
WOODFORD COUNTY
SCALE: VERT. 1"=40'
HORIZ. 1"=40'
DATE: 10/31/07
DRAWN BY: GSJ
CHECKED BY: KRG