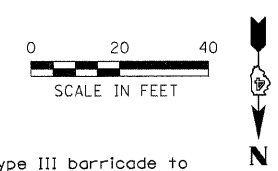


CONTRACT NO. 68576			
F.A.P. RTE.	SECTION	COUNTY	TOTAL SHEETS
698	126BR	WOODFORD	56
STA. 519+62.00		TO STA. 523+13.00	
FED. ROAD DIST. NO. 4 ILLINOIS FED. AID PROJECT			

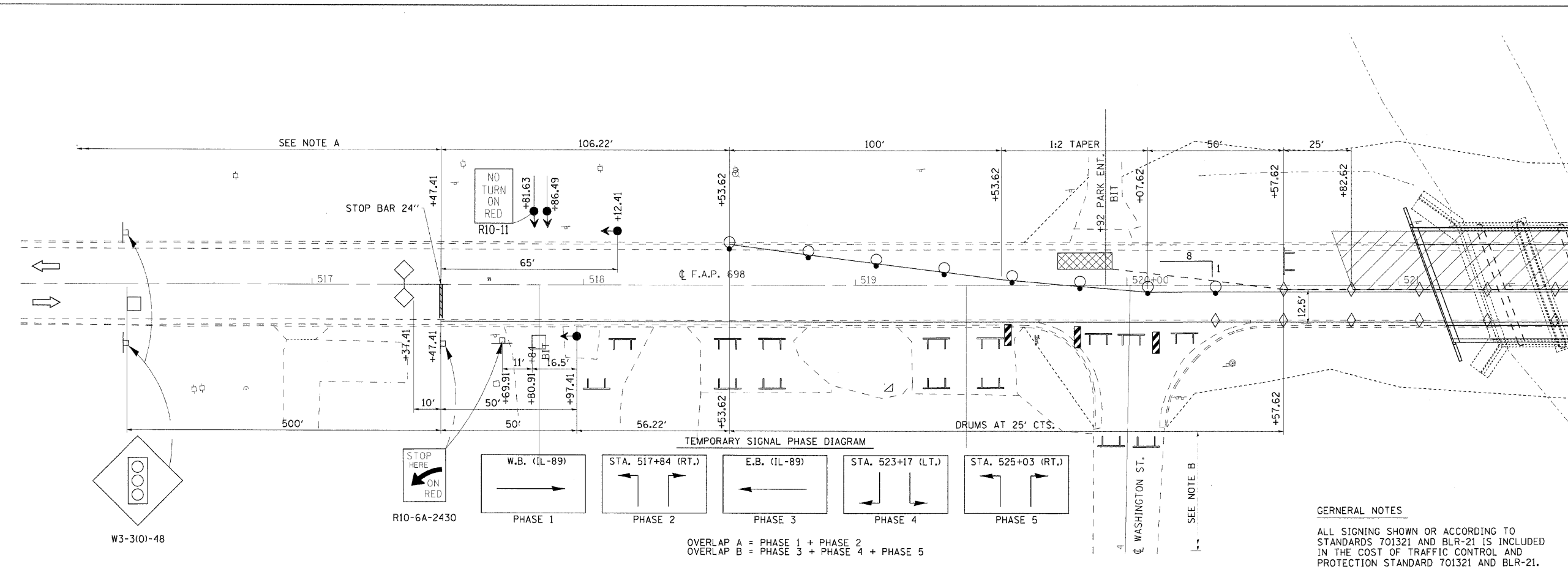


- Type III barricade to be placed when no work is being performed.
- Barrier wall/guardrail markers at 25' cts. See Standards 704001 & 635011.
- When temp. bridge rail is specified, it shall be connected to the temp. conc. barrier using a traffic barrier terminal Type II.
- These vertical panels at 25' cts. may be omitted when the guardrail, w/markers, extends to at least this point on the taper.

NOTE A
REMAINDER OF SIGNING IS ACCORDING TO STANDARD 701321 AND AS DIRECTED BY THE ENGINEER.

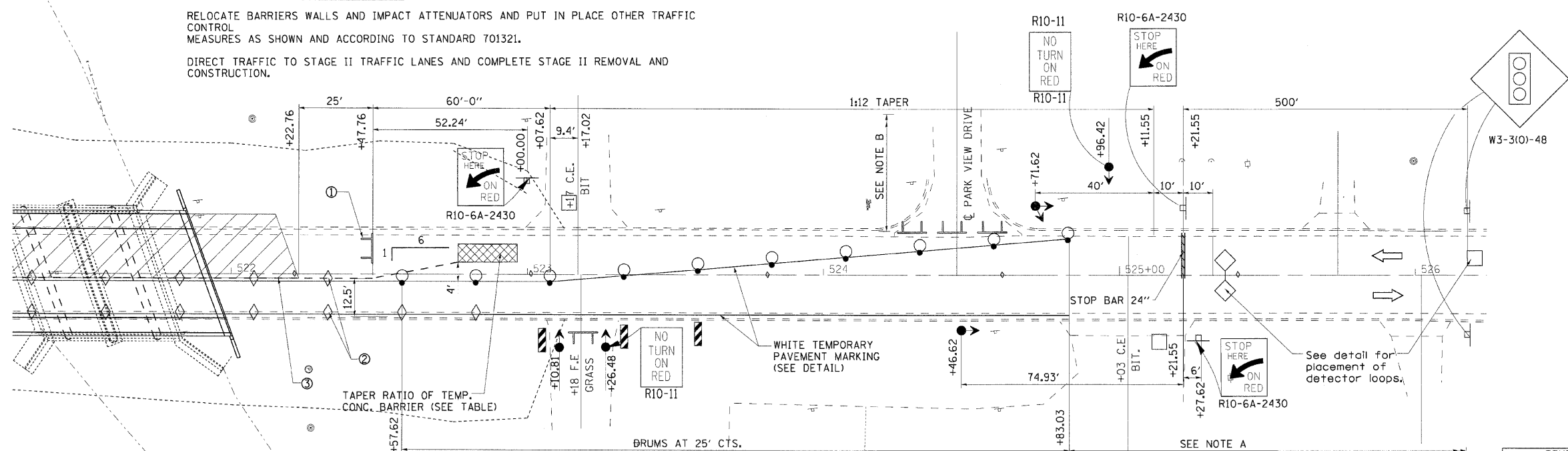
NOTE B
THE TRAFFIC CONTROL SIGNS SHOWN FOR LOCAL ACCESS IS GOVERNED BY HIGHWAY STANDARD BLR-21 AND AS DIRECTED BY THE ENGINEER.

GENERAL NOTES
ALL SIGNING SHOWN OR ACCORDING TO STANDARDS 701321 AND BLR-21 IS INCLUDED IN THE COST OF TRAFFIC CONTROL AND PROTECTION STANDARD 701321 AND BLR-21.

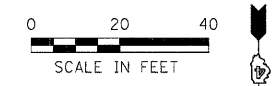


STAGE II SEQUENCE OF CONSTRUCTION

RELOCATE BARRIERS WALLS AND IMPACT ATTENUATORS AND PUT IN PLACE OTHER TRAFFIC CONTROL MEASURES AS SHOWN AND ACCORDING TO STANDARD 701321.
DIRECT TRAFFIC TO STAGE II TRAFFIC LANES AND COMPLETE STAGE II REMOVAL AND CONSTRUCTION.



SYMBOLS



- Work area
- Sign
- Type III barricade
- Traffic signal
- Detector loops (6'x6')
- Impact attenuator
- Drum with steady burning light
- Temporary concrete barrier
- Temporary rumble strip (when specified)
- Double vertical panel (see detail)
- Crystal, bidirectional barrier wall/guardrail marker

REVISIONS	
NAME	DATE

ILLINOIS DEPARTMENT OF TRANSPORTATION
STAGE II CONSTRUCTION AND TRAFFIC CONTROL
F.A.P. 698
SECTION 126BR
WOODFORD COUNTY

SCALE: VERT. DATE: 10/31/07
HORIZ. DATE: 10/31/07
DRAWN BY: GSJ
CHECKED BY: KRK

PLOT DATE = #DATES
FILE NAME = #FILEL#
PLOT SCALE = #SCALE#
USER NAME = #USER#