

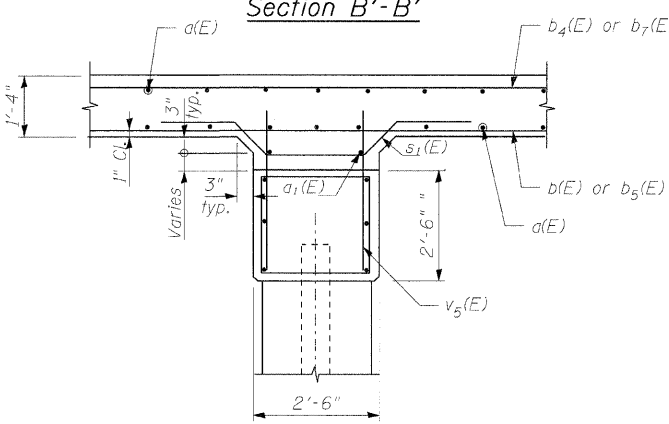
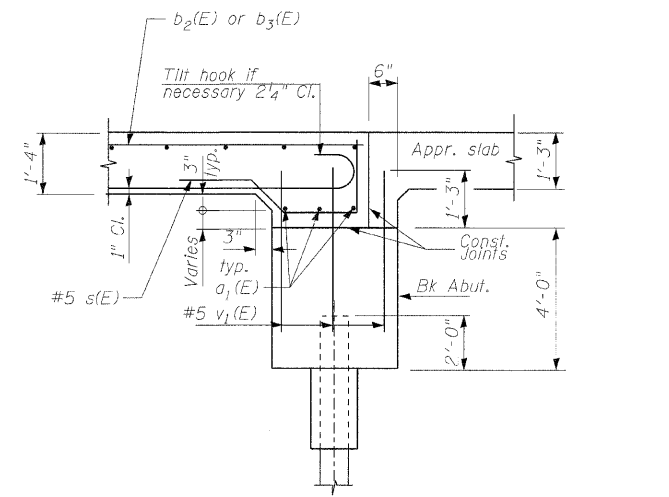
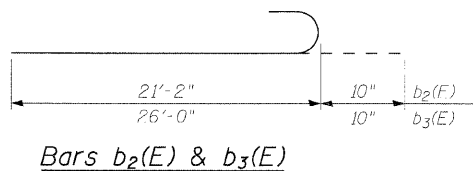
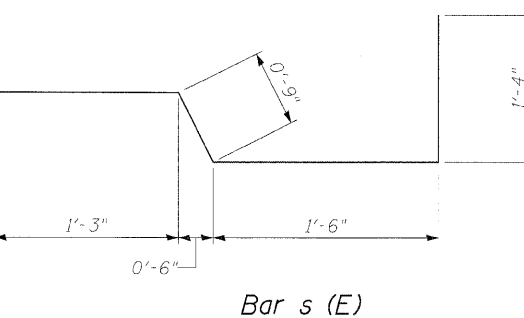
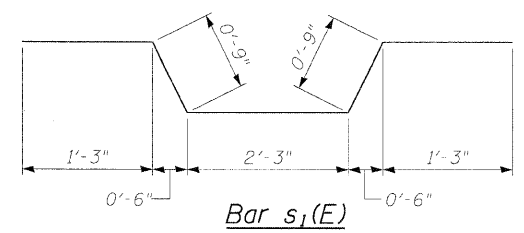
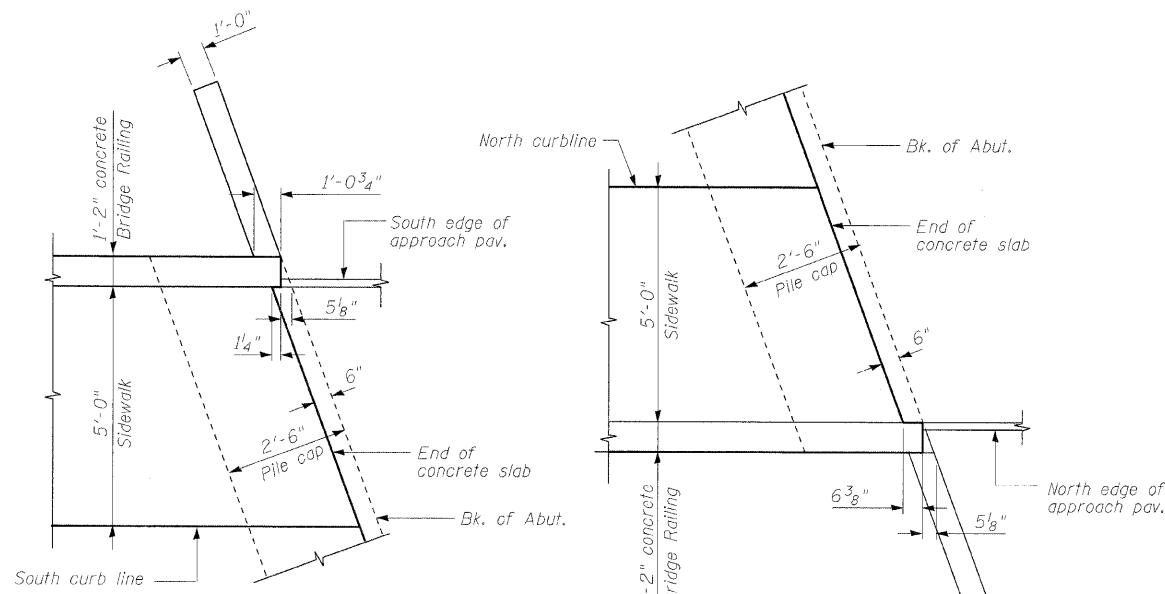
STATE OF ILLINOIS  
DEPARTMENT OF TRANSPORTATION

ROUTE NO.	SECTION	COUNTY	SHEETS	SHEET NO.
F.A.P. 698	126BR	WOODFORD	56	25
FED. ROAD DIST. NO. 7	ILLINOIS	FED. AID PROJECT		

Contract # 68576

**SUPERSTRUCTURE  
BILL OF MATERIAL**

Bar	No.	Size	Length	Shape
a(E)	246	#5	20'-10"	—
a <sub>1</sub> (E)	20	#5	22'-2"	—
b(E)	37	#7	32'-9"	—
b <sub>1</sub> (E)	36	#7	23'-0"	—
b <sub>2</sub> (E)	72	#7	22'-0"	—
b <sub>3</sub> (E)	74	#7	26'-10"	—
b <sub>4</sub> (E)	74	#9	24'-0"	—
b <sub>5</sub> (E)	37	#5	11'-10"	—
b <sub>6</sub> (E)	74	#5	15'-3"	—
b <sub>7</sub> (E)	72	#9	12'-6"	—
b <sub>8</sub> (E)	42	#5	27'-9"	—
c(E)	164	#5	2'-5"	—
c <sub>1</sub> (E)	164	#5	5'-9"	—
d(E)	164	#5	4'-6"	—
d <sub>1</sub> (E)	214	#5	7'-5"	—
s(E)	74	#5	4'-10"	—
s <sub>1</sub> (E)	74	#5	6'-3"	—
Item	Unit	Quantity		
Concrete Superstructure	Cu. Yd.	206.3		
Reinforcement Bars, Epoxy Coated	Pound	33900		



Detail A'

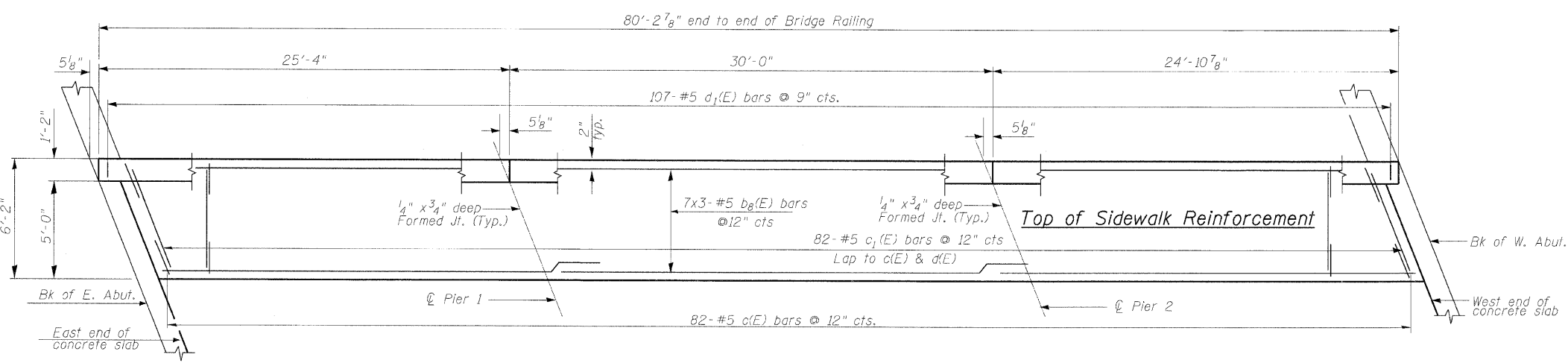
Detail B'

Bar s(E)

Bars b<sub>2</sub>(E) & b<sub>3</sub>(E)

Section B'-B'

Section C'-C'



PLAN OF SIDEWALK

Note:  
Bars indicated thus 7x3-#15 etc. indicates 7 line of bars with 3 length per line.  
For location of Details A' & B' and section B'-B' & C'-C.' See Sheet 9 of 19  
The Contractor shall make allowance for the deflection of forms, shrinkage and settlement of falsework, in addition to allowance for dead load deflection. Forms for deck slab shall be removed prior to placement of bridge approach pavement.  
For concrete Bridge Railing details see sht. 11 of 19.

DESIGNED	KRG
CHECKED	MJK
DRAWN	GSJ
CHECKED	MJK

MIN. BAR LAP  
#5 bars = 1'-8"

**SUPERSTRUCTURE DETAILS**  
**IL. ROUTE 89 OVER SNAG CREEK**  
**F.A.P. ROUTE 698 SEC. 126BR**  
**WOODFORD COUNTY STATION 521+52.42**  
**STRUCTURE NO. 102-0082**