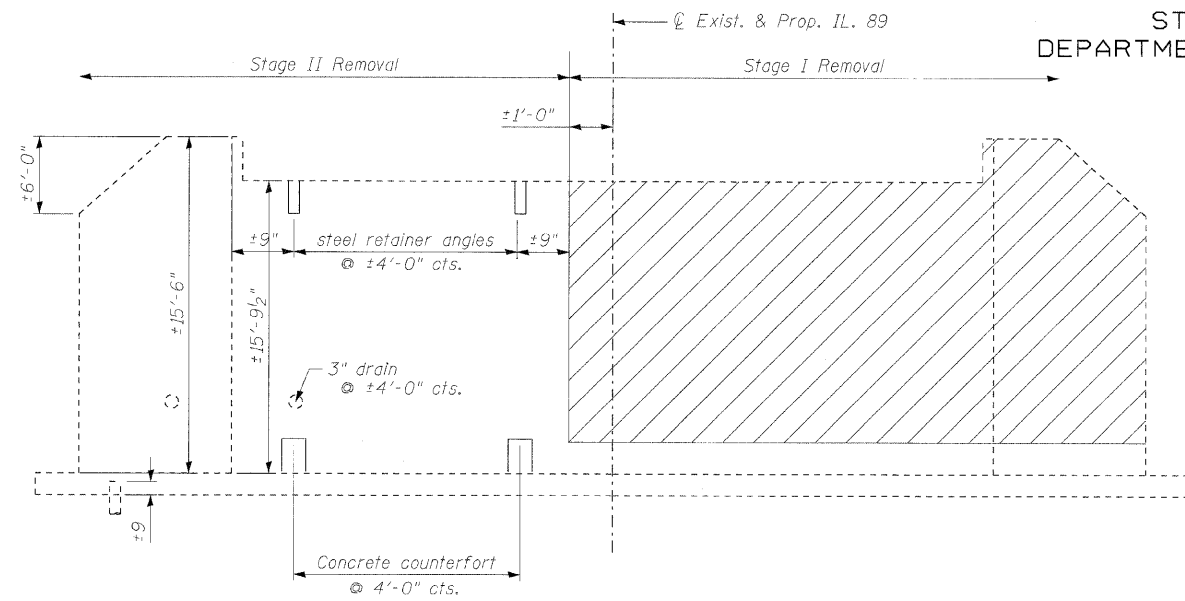


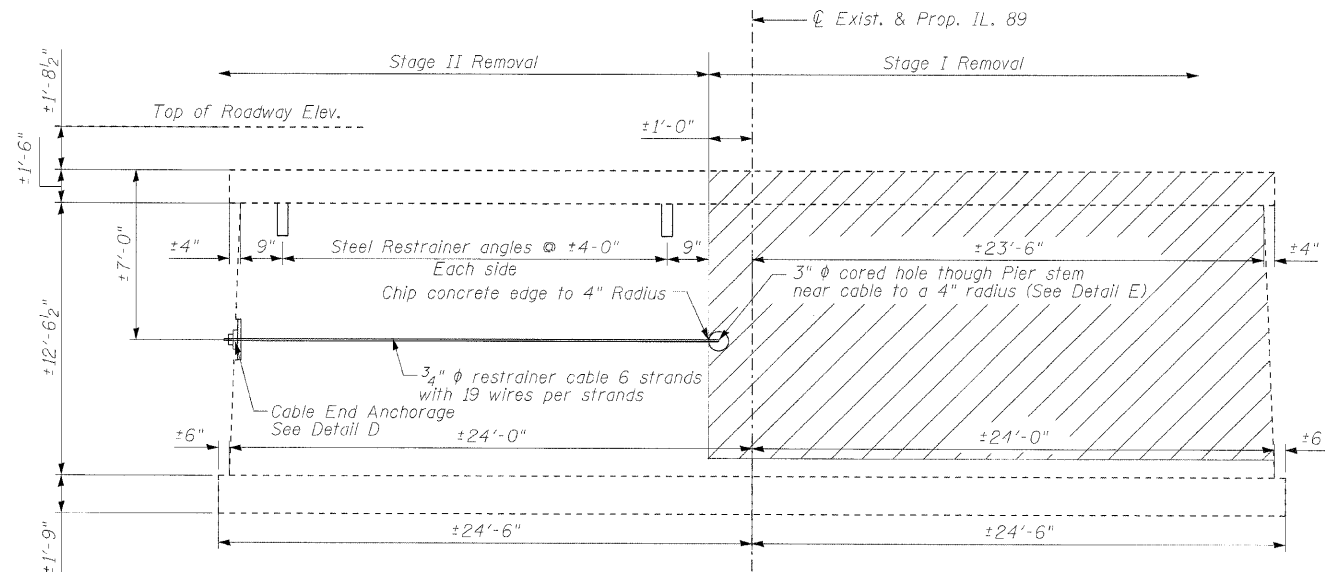
STATE OF ILLINOIS  
DEPARTMENT OF TRANSPORTATION

ROUTE NO.	SECTION	COUNTY	TOTAL SHEETS	SHEET NO.	SHEET NO. 13 19 SHEETS
F.A.P. 698	126BR	WOODFORD	56	28	
FED. ROAD DIST. NO. 7		ILLINOIS	FED. AID PROJECT		

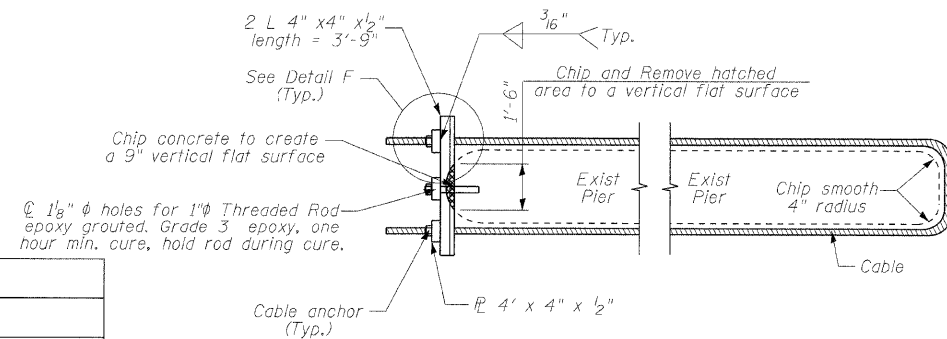
Contract # 68576



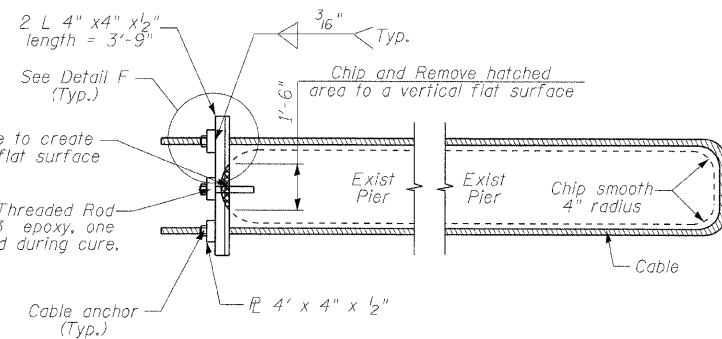
**EXISTING WEST ABUTMENT ELEVATION [EXISTING EAST ABUTMENT SIMILAR]**  
(Looking West)



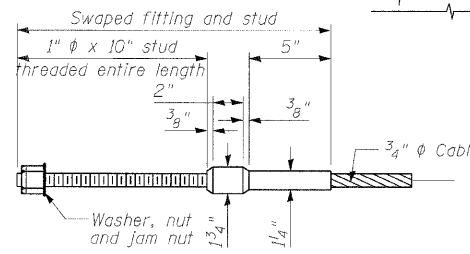
**EXISTING PIER ELEVATION**  
(Looking West)



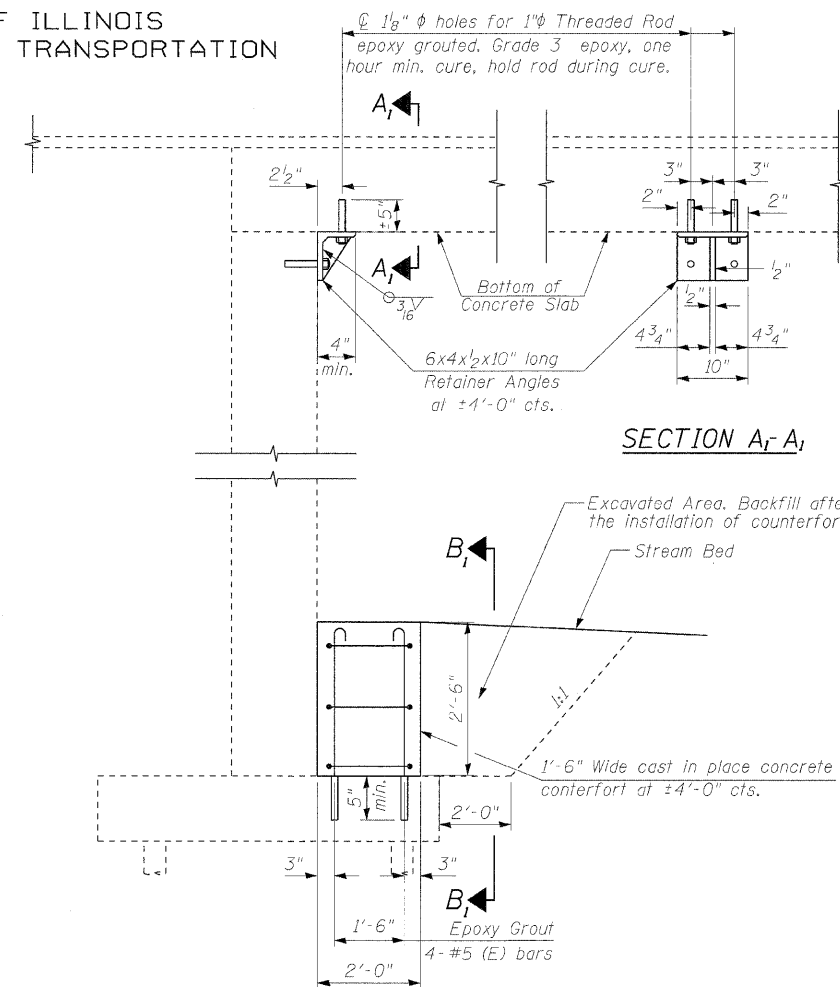
**DETAIL D**



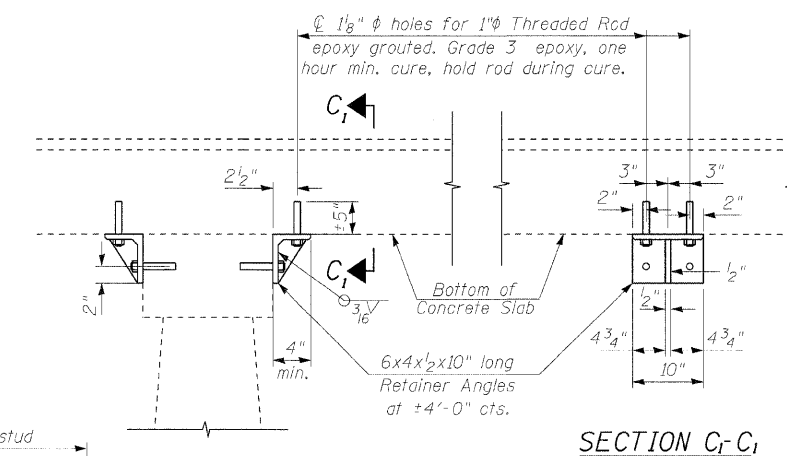
**DETAIL E**



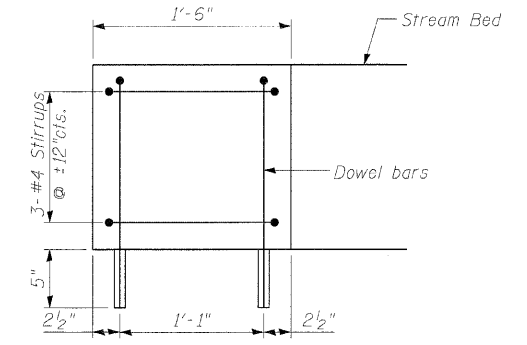
**DETAIL F**  
Cable End Anchorage



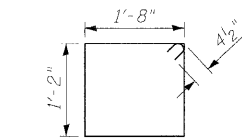
**SECTION THRU ABUTMENT**



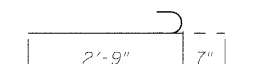
**SECTION THRU PIER**



**SECTION B-B**



**STIRRUP DETAIL**



**DOWEL BAR DETAIL**

NOTES:

- Excavation behind existing abutment walls shall be performed to balance front and back soil pressure before removing the existing superstructure. The Contractor shall sawcut the upper portion of the existing abutment at the stage removal line before Stage I removal to ensure the remaining portion will not be prematurely damaged.
- The temporary support system shall be in place before commencing Stage I Removal.
- Tighten cable nuts to develop ±5 KIP cable tension each end equally.
- An alternate system of Temporary Stage construction support is allowed subject to approval by Engineer. See Special provisions.
- Hatched areas show stage removal.

**BILL OF MATERIAL**

Item	Unit	Qty.
Temporary Support System	Lump Sum.	Lump Sum.

DESIGNED	KRG
CHECKED	MJK
DRAWN	GSI
CHECKED	MJK

**TEMPORARY SUPPORT SYSTEM**  
IL. ROUTE 89 OVER SNAG CREEK  
F.A.P. ROUTE 698 SEC. 126BR  
WOODFORD COUNTY STATION 521+52.42  
STRUCTURE NO. 102-0082