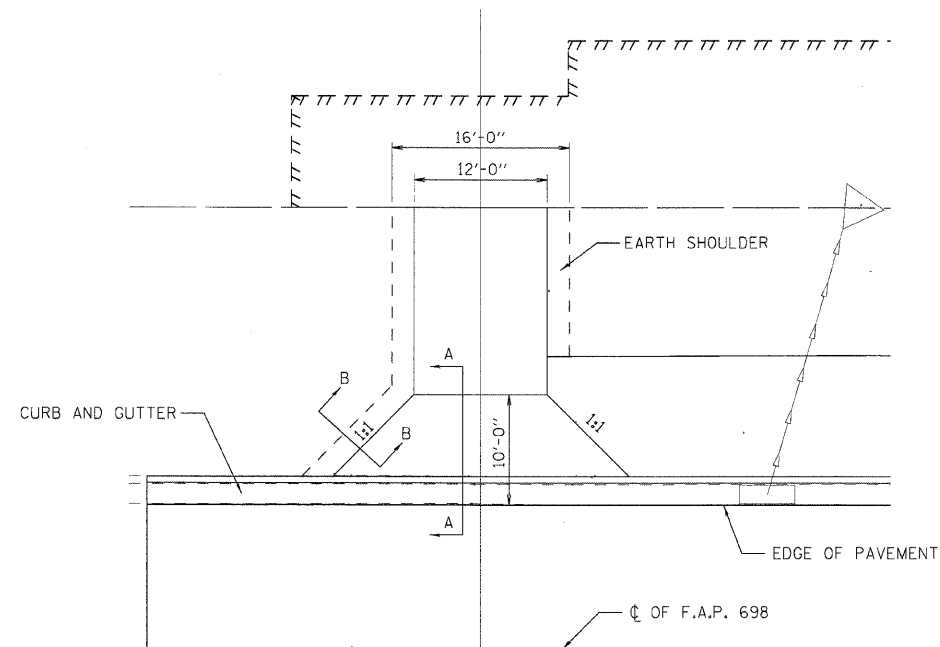
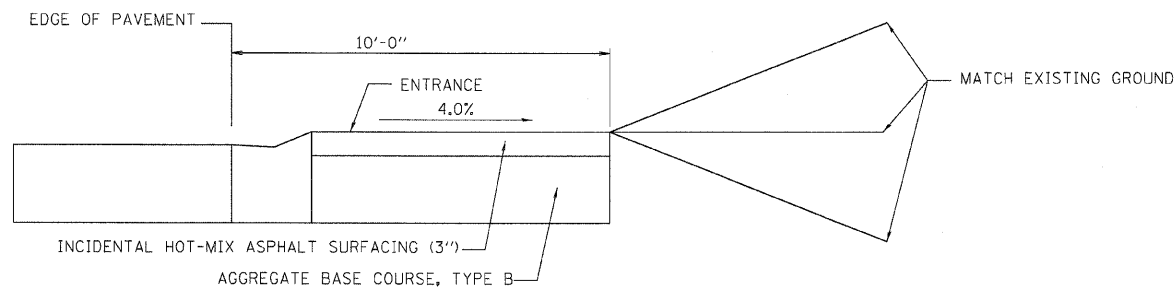


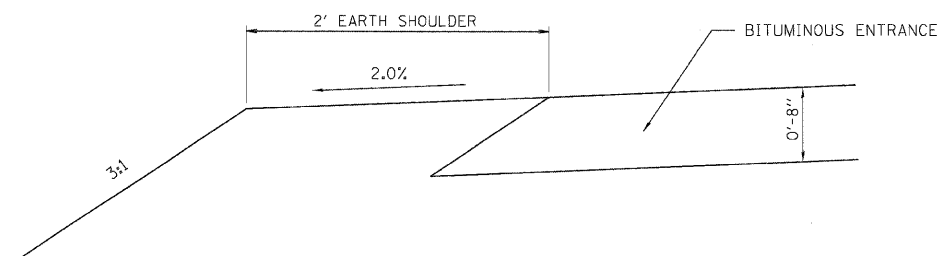
F.A.P. RTE.	SECTION	COUNTY	TOTAL SHEETS	SHEET NO.
698	126BR	WOODFORD	56	36
STA. 519+62.00		TO STA. 523+13.00		
FED. ROAD DIST. NO. 4 ILLINOIS FED. AID PROJECT				



TYPICAL ENTRANCE DETAIL
STA. 519+92.00 (PARK ENT.)



DETAIL A
ENTRANCE PROFILE CONTROLS



DETAIL B
SHOULDER ENTRANCE PROFILE CONTROLS

REVISIONS	
NAME	DATE

ILLINOIS DEPARTMENT OF TRANSPORTATION
ENTRANCE DETAILS
 F.A.P. 698
 SECTION 126BR
 WOODFORD COUNTY
 VERT. SCALE: 1"=8'
 HORIZ. SCALE: 1"=10'
 DATE: 10/31/07
 DRAWN BY: GSJ
 CHECKED BY: KRG

PLOT DATE = #DATE#
 FILE NAME = #FILE#
 PLOT SCALE = #SCALE#
 USER NAME = #USER#